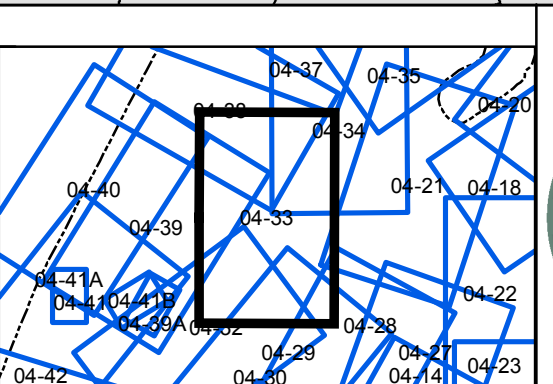


FOR TAX PURPOSES ONLY
 Prepared By:
Ronald McIntire
 Morgan County Assessor

Legend		
	District Boundary	
	Previous Deed	
	Property	
	Road Easement	
	Railroad Right of Way	
	Road Right of Way	
	River	
	Deed lot Number	(15)
	Parcel or Index Number	(9)
	Unknown	(4)
	Improvement	(1)
	Cemetery	(1)
	Church	(1)
	Educational	(1)

Restriction
 REPRODUCTION OF TAX MAPS PROHIBITED
 - It is unlawful to copy, photocopy, scan, photograph, or otherwise reproduce this tax map. Pursuant to the provisions of W.Va. CSR § 189-5-5 (2013) no person may reproduce, copy, distribute or sell copies of tax maps prepared by the counties without having first obtained the written permission of the Morgan County Assessor. In addition to other penalties and civil remedies, any person who, without the written permission of the Morgan County Assessor, reproduces, copies, distributes, or sells or who allows the reproduction, copying, distribution or sale of tax maps prepared by the Morgan County Assessor, shall be refused permission by the Morgan County Assessor or Assessor's agent to purchase tax maps in the future.

Revisions					
1	Revised 12/30/2016	10	19	28	
2		11	20	29	
3		12	21	30	
4		13	22	31	
5		14	23	32	
6		15	24	33	
7		16	25	34	
8		17	26	35	
9		18	27	36	



MORGAN COUNTY
 Assessor's Office
 Ronald McIntire, Assessor
 Berkeley Springs, WV

CACAPON
 District: 04 Map No: 33
 Date of Publication: 1/25/2017
 Scale: 1" = 200'