

**FOR TAX PURPOSES ONLY**

Prepared By:  
**Ronald McIntire**  
 Morgan County Assessor

**Legend**

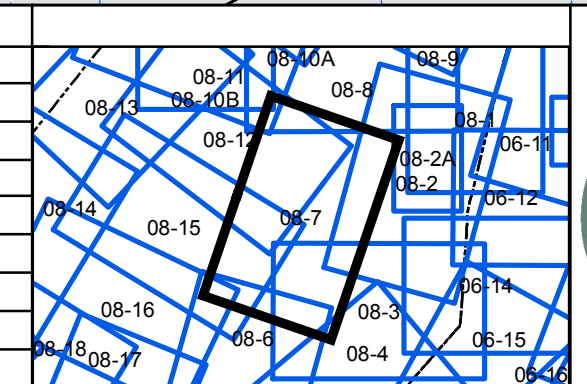
	District Boundary
	Previous Deed
	Property
	Road Easement
	Railroad Right of Way
	Road Right of Way
	River
	Deed Lot Number (15)
	Parcel or Index Number (9)
	Unknown
	Improvement (4)
	Cemetery (1)
	Church (1)
	Educational (1)

**Restriction**

REPRODUCTION OF TAX MAPS PROHIBITED - It is unlawful to copy, photograph, scan, or otherwise reproduce this tax map. Pursuant to the provisions of W.Va. CSR § 189-5-5 (2013) no person may reproduce, copy, distribute or sell copies of tax maps prepared by the counties without having first obtained the written permission of the Morgan County Assessor. In addition to other penalties and civil remedies, any person who, without the written permission of the Morgan County Assessor, reproduces, copies, distributes, or sells or who allows the reproduction, copying, distribution or sale of tax maps prepared by the Morgan County Assessor, shall be refused permission by the Morgan County Assessor or Assessor's agent to purchase tax maps in the future.

**Revisions**

1	Revised 12/30/2016	10		19		28	
2		11		20		29	
3		12		21		30	
4		13		22		31	
5		14		23		32	
6		15		24		33	
7		16		25		34	
8		17		26		35	
9		18		27		36	



**MORGAN COUNTY**  
 Assessor's Office  
 Ronald McIntire, Assessor  
 Berkeley Springs, WV

**TIMBER RIDGE**

District: 08 Map No: 7  
 Date of Publication: 1/25/2017  
 Scale: 1" = 200'