

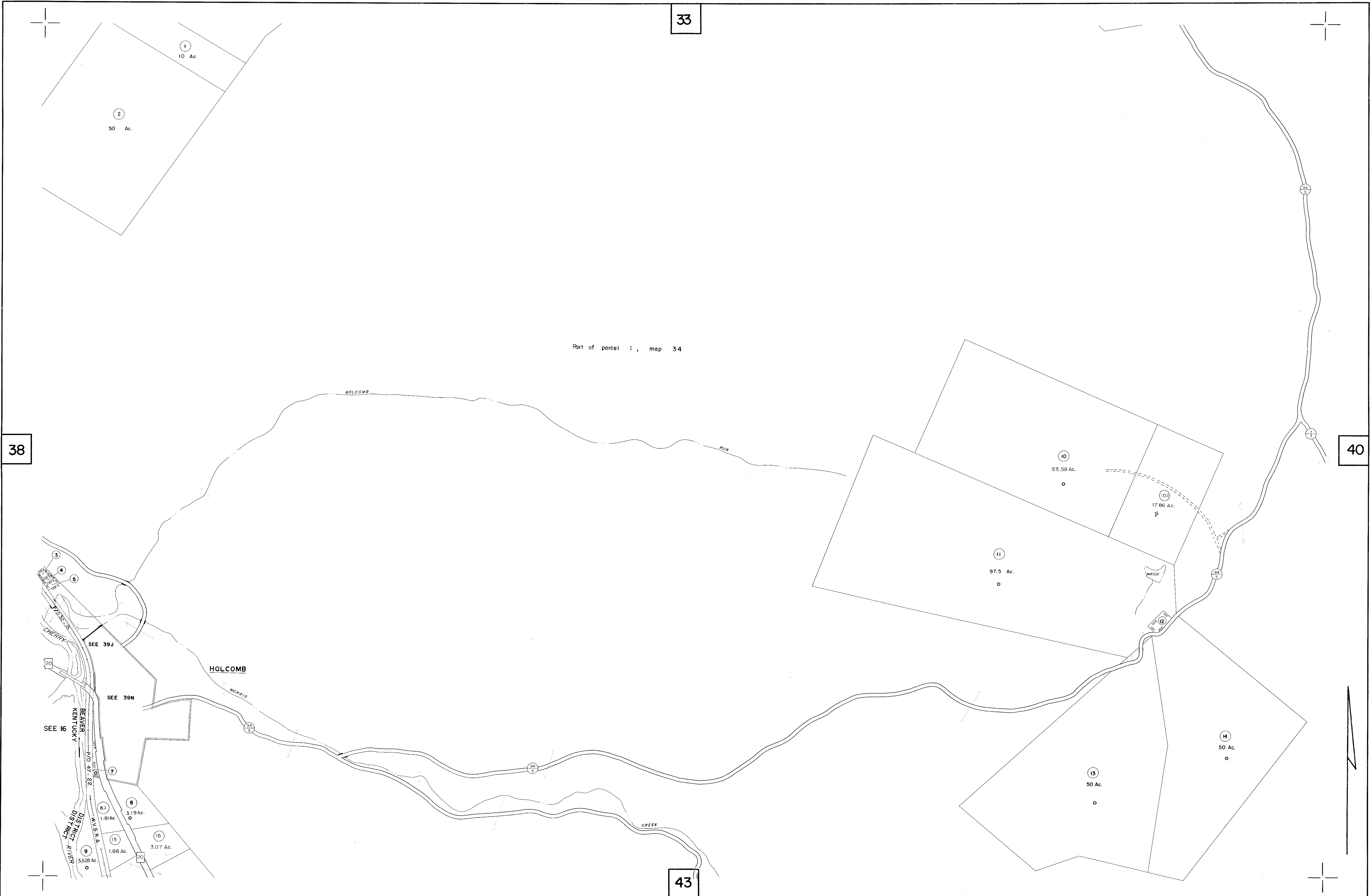
33

38

40

43

Part of parcel 1, map 34



FOR TAX PURPOSES ONLY

PREPARED BY
AERO SERVICE CORPORATION
 210 E. COURTLAND STREET PHILADELPHIA, PENNA.

Legend

| | | | |
|-----------------------------|---|----------------------------------|------|
| Property line | — | Original lot line | — |
| Edge of pavement or roadway | — | Deed lot number in parenthesis | (15) |
| Corporation line | — | Parcel or index number in circle | ⊙ |
| District line | — | Improvement | ○ |
| County line | — | Railroad | ++++ |

Revisions

| | | | | | |
|---|---------------------|--------|----|----|--|
| 1 | deleted parcels (8) | 9 | | 17 | |
| 2 | 7-1-83 | L.E.S. | 10 | 18 | |
| 3 | 7-1-80 | REX | 11 | 19 | |
| 4 | OGIS 5/18/93 | SAJ | 12 | 20 | |
| 5 | 4-1-97 | J.E.B. | 13 | 21 | |
| 6 | 11-1-98 | J.E.B. | 14 | 22 | |
| 7 | | | 15 | 23 | |
| 8 | | | 16 | 24 | |

NICHOLAS COUNTY — WEST VIRGINIA
 Office of Assessor

BEAVER DISTRICT

City — Town — District:
 Map No: **39**
 Date, Aerial Photography: 4-20-61 Date, Map: 3-5-62
 Photo No: 13-105 & 106, 13-106 & 107 Scale: 1" = 400'