

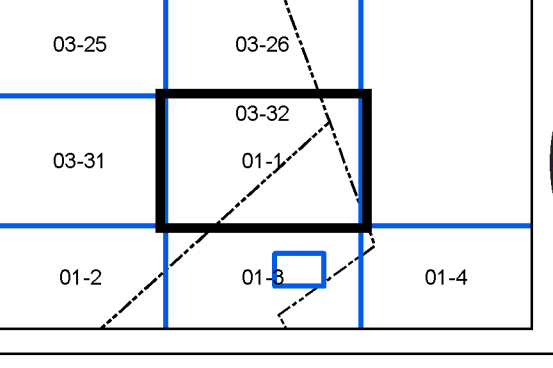
FOR TAX PURPOSES ONLY
LANDMARK
 geospatial
 A Division of Landmark Forestry LLC

Legend	
	District Boundary
	Previous Deed
	Property
	Road Easement
	Railroad Right of Way
	Road Right of Way
	River
	Deed lot Number
	Parcel or Index Number
	Unknown
	Improvement
	Cemetery
	Church
	Educational

Restriction

REPRODUCTION OF TAX MAPS PROHIBITED
 - It is unlawful to copy, photocopy, scan, photograph, or otherwise reproduce this tax map. Pursuant to the provisions of W Va CSR § 189-5-5 (2013) no person may reproduce, copy, distribute or sell copies of tax maps prepared by the counties without having first obtained the written permission of the Nicholas County Assessor. In addition to other penalties and civil remedies, any person who, without the written permission of the Nicholas County Assessor, reproduces, copies, distributes, or sells or who allows the reproduction, copying, distribution or sale of tax maps prepared by the Nicholas County Assessor, shall be refused permission by the Nicholas County Assessor or Assessor's agent to purchase tax maps in the future.

1	10	19	28
2	11	20	29
3	12	21	30
4	13	22	31
5	14	23	32
6	15	24	33
7	16	25	34
8	17	26	35
9	18	27	36



NICHOLAS COUNTY
 Assessor's Office
 Ernie Dennison, Assessor
 SUMMERSVILLE, WV

HAMILTON
 District 03 Map No. 32
 Date of Publication: 1/31/2017
 Scale: 1"=400'