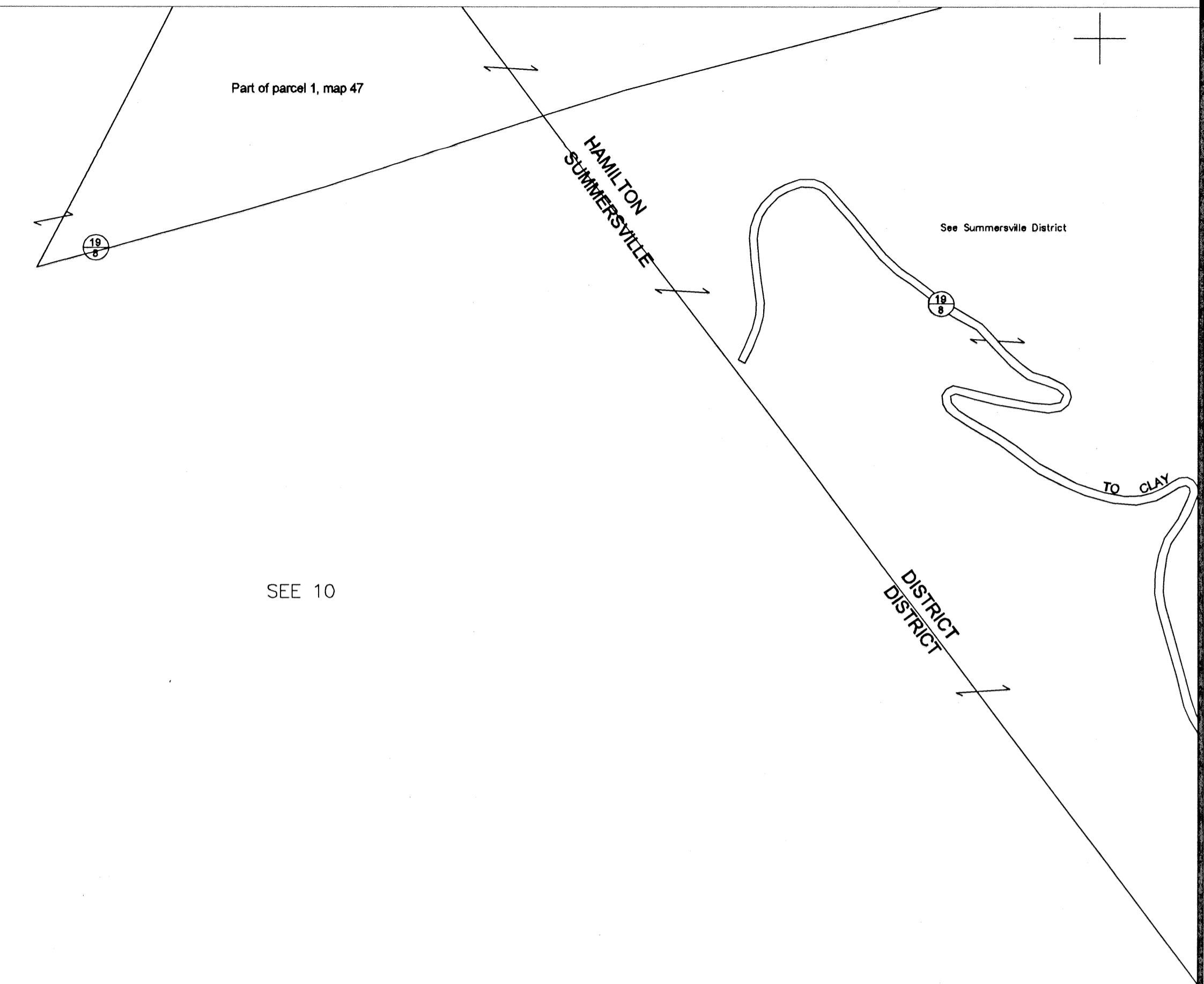


46



--

52

--

FOR TAX PURPOSE ONLY

PREPARED BY  
ERNIE DENNISON  
NICHOLAS COUNTY ASSESSOR



Legend

Property line	—————	Original lot line	—————
Edge of pavement or roadway	=====	Deed lot number & pavement	(15)
Corporation line	=====	Parcel or index number	99
District line	=====	Improvement	●
County line	=====	Railroad	—————

Revisions

1	5-13-2003	TER	9
2	1-19-2005	TER	10
3			11
4			12
5			13
6			14
7			15

NICHOLAS COUNTY - WEST VIRGINIA  
Office of Assessor

HAMILTON DISTRICT

City - Town - District: \_\_\_\_\_

Map No: **51**

Date, Aerial Photography: 4-20-81 Date, Map: 1-3-82

Photo No: \_\_\_\_\_ Scale: 1"=400'