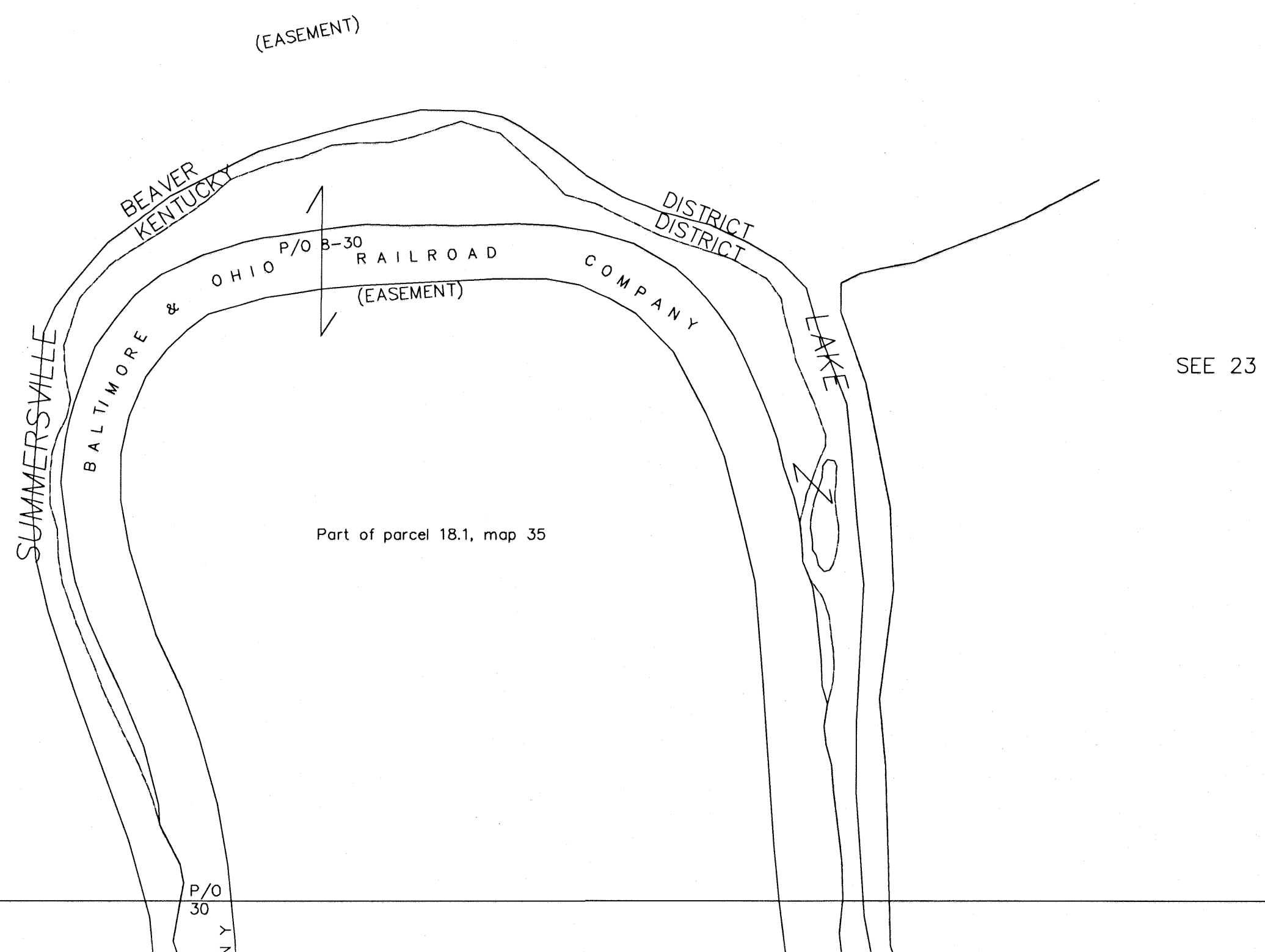


2

4



8

FOR TAX PURPOSE ONLY

PREPARED BY  
**ERNIE DENNISON**  
 NICHOLAS COUNTY ASSESSOR



Legend	
Property line	—————
Edge of pavement or roadway	=====
Corporation line	—————
District line	—————
County line	—————
Original lot line	—————
Deed lot number in parenthesis	(15)
Parcel or index number	99
Improvement	•
Railroad	—————

Revisions				
1	5-14-2003	TER	9	
2	1-20-2005	TER	10	
3			11	
4			12	
5			13	
6			14	
7			15	

NICHOLAS COUNTY - WEST VIRGINIA  
 Office of Assessor

**KENTUCKY DISTRICT**  
 City - Town - District:  
**3**

Map No: \_\_\_\_\_  
 Date, Aerial Photography: 4-20-61 Date, Map: 11-23-62  
 Photo No: \_\_\_\_\_ Scale: 1"=400'