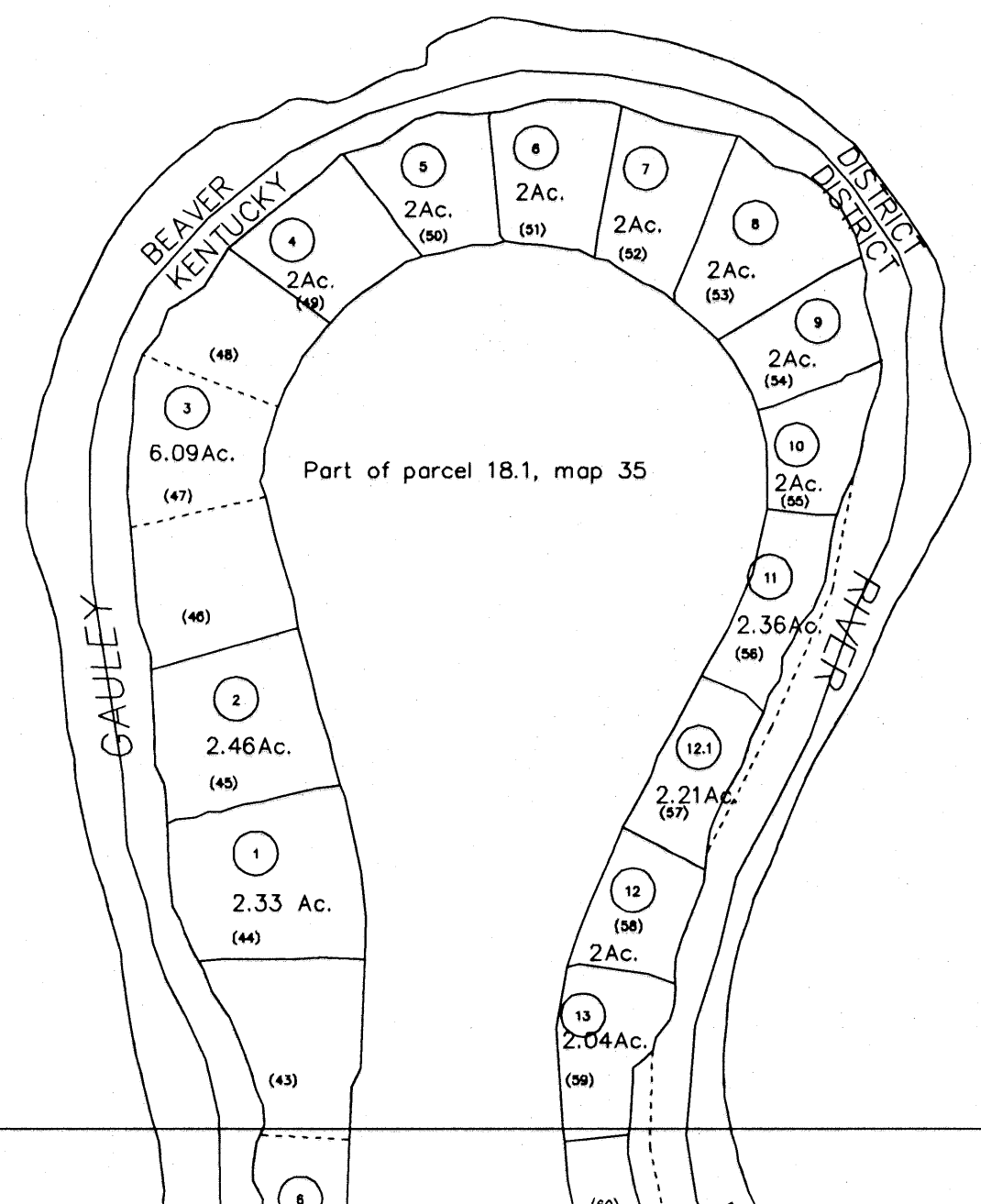


3

9

SEE 24



FOR TAX PURPOSE ONLY

PREPARED BY  
ERNIE DENNISON  
NICHOLAS COUNTY ASSESSOR



Legend

Property line	—————	Original lot line	—————
Edge of pavement or roadway	—————	Deed lot number	(15)
Corporation line	—————	Parcel or index number	99
District line	—————	Improvement	•
County line	—————	Railroad	—+—

Revisions

1	5-14-2003	TER	9
2	1-20-2005	TER	10
3			11
4			12
5			13
6			14
7			15

NICHOLAS COUNTY - WEST VIRGINIA  
Office of Assessor

KENTUCKY DISTRICT

City - Town - District: **4**

Map No: \_\_\_\_\_  
Date, Aerial Photography: 4-20-61 Date, Map: 11-23-62  
Photo No: \_\_\_\_\_ Scale: 1"=400'