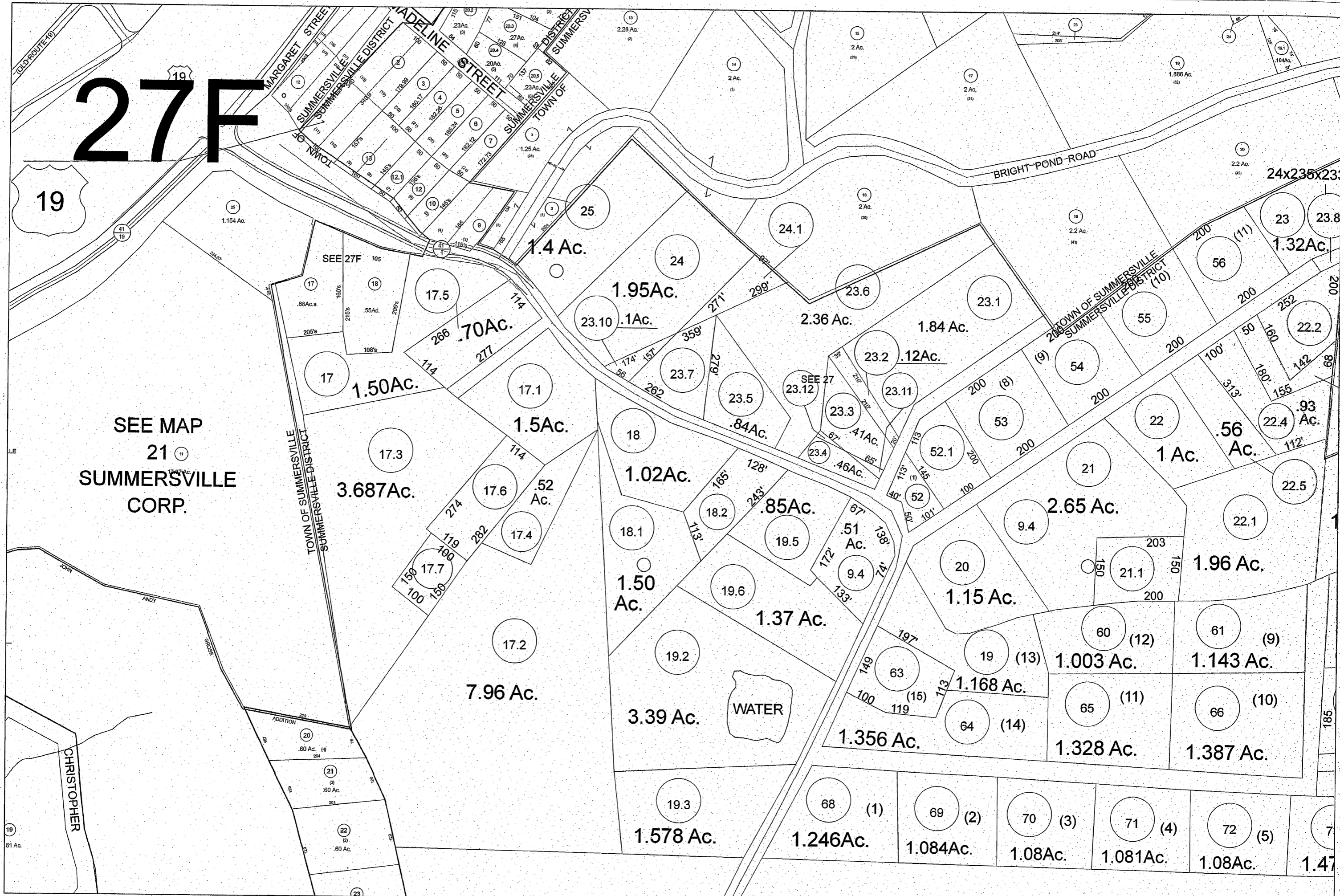


# 27F

19

SEE MAP  
21  
SUMMERSVILLE  
CORP.

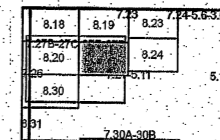


For Tax Purposes Only  
Prepared By:  
**ERNIE DENNISON**  
**NICHOLAS COUNTY ASSESSOR**

Legend	
<b>Water</b>	<b>Roads</b>
Swamp	RailRoad
Water	Road_Dashed
	Roads
	Map_Boundary
	Map
	Map_Boundary
	TaxParcels
	PRINT-GRID#2

West Virginia Legislative Regulations  
Property Valuation Training and Procedures Commission  
Title 189 Series 5 Article 5 Section 5.1  
Reproduction of tax maps prohibited  
No person may reproduce, copy, distribute  
or sell copies of tax maps prepared by the  
counties without having first obtained the  
written permission of the County Assessor.

**NICHOLAS COUNTY**  
WEST VIRGINIA  
Office Of Assessor



**Summersville Corp**  
**21**  
1 inch = 100 feet  
Revised: Apr 25, 2012