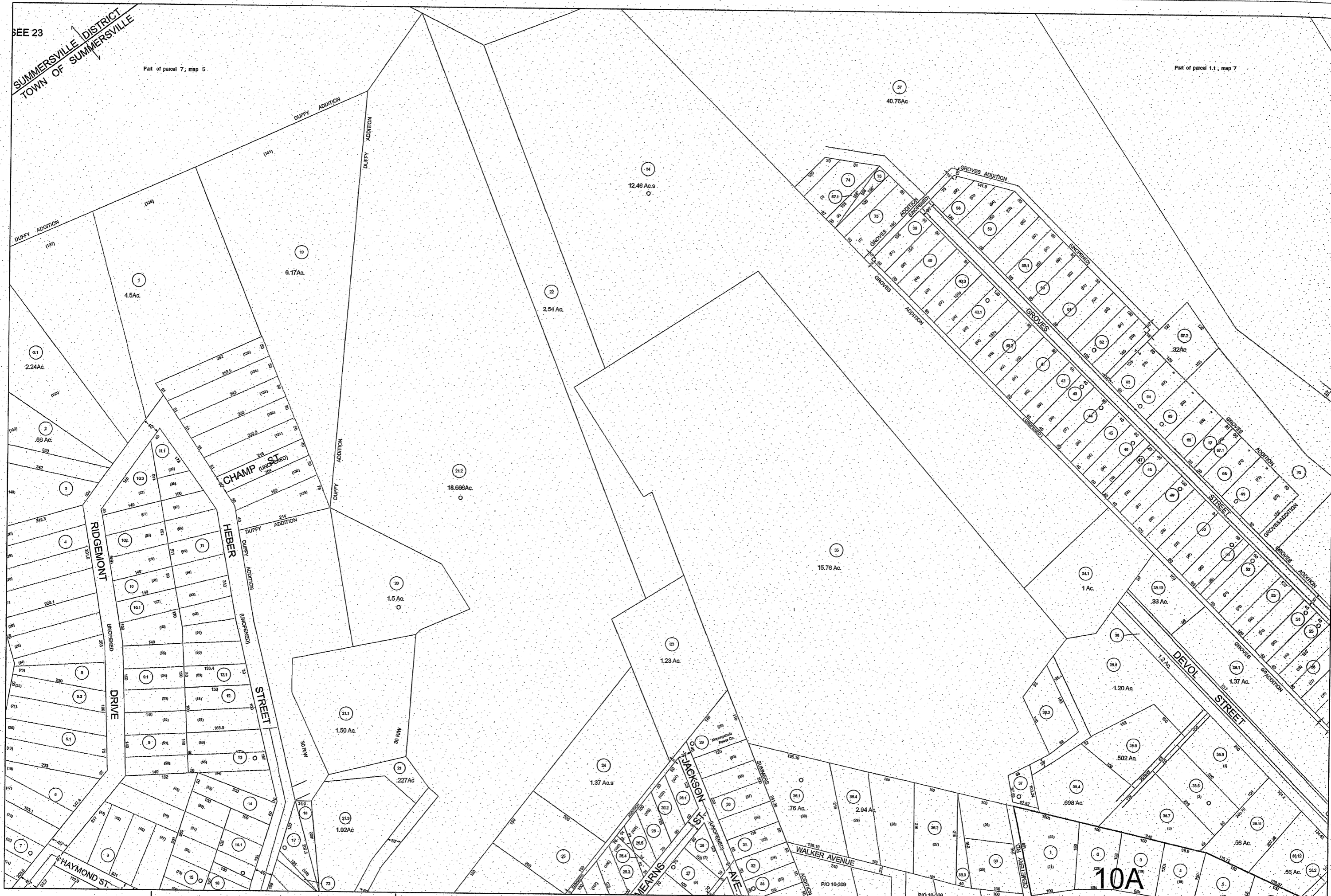


SEE 23

SUMMERSVILLE DISTRICT
TOWN OF SUMMERSVILLE

Part of parcel 7, map 5

Part of parcel 1.1, map 7



10A



For Tax Purposes Only
 Prepared By:
ERNIE DENNISON
NICHOLAS COUNTY ASSESSOR

Legend

Water	Roads	Boundary	<all other values>
Swamp	RailRoad	Corp_Boundary	Map
Water	Road_Dashed	Map_Boundary	TaxParcels
	Roads	PRINT-GRID#2	

West Virginia Legislative Regulations
 Property Valuation Training and Procedures Commission
 Title 180 Series 6 Article 5 Section 5.1
 Reproduction of tax maps prohibited
 No person may reproduce, copy, distribute
 or sell copies of tax maps prepared by the
 counties without having first obtained the
 written permission of the County Assessor.

NICHOLAS COUNTY
 WEST VIRGINIA
 Office Of Assessor

7.18	8.22	8.77	9.00	9.33
8.2	8.3	8.4	8.34	
8.5	8.6	8.7	8.35	
7.22	8.8	8.10	8.11	8.36
8.12	8.13	8.14	8.15	8.16
7.26	8.17	8.18	8.24	8.24
	8.28	8.30	8.31	8.24

Summersville Corp
6
 1 inch = 100 feet
 Revised: Apr 25, 2012