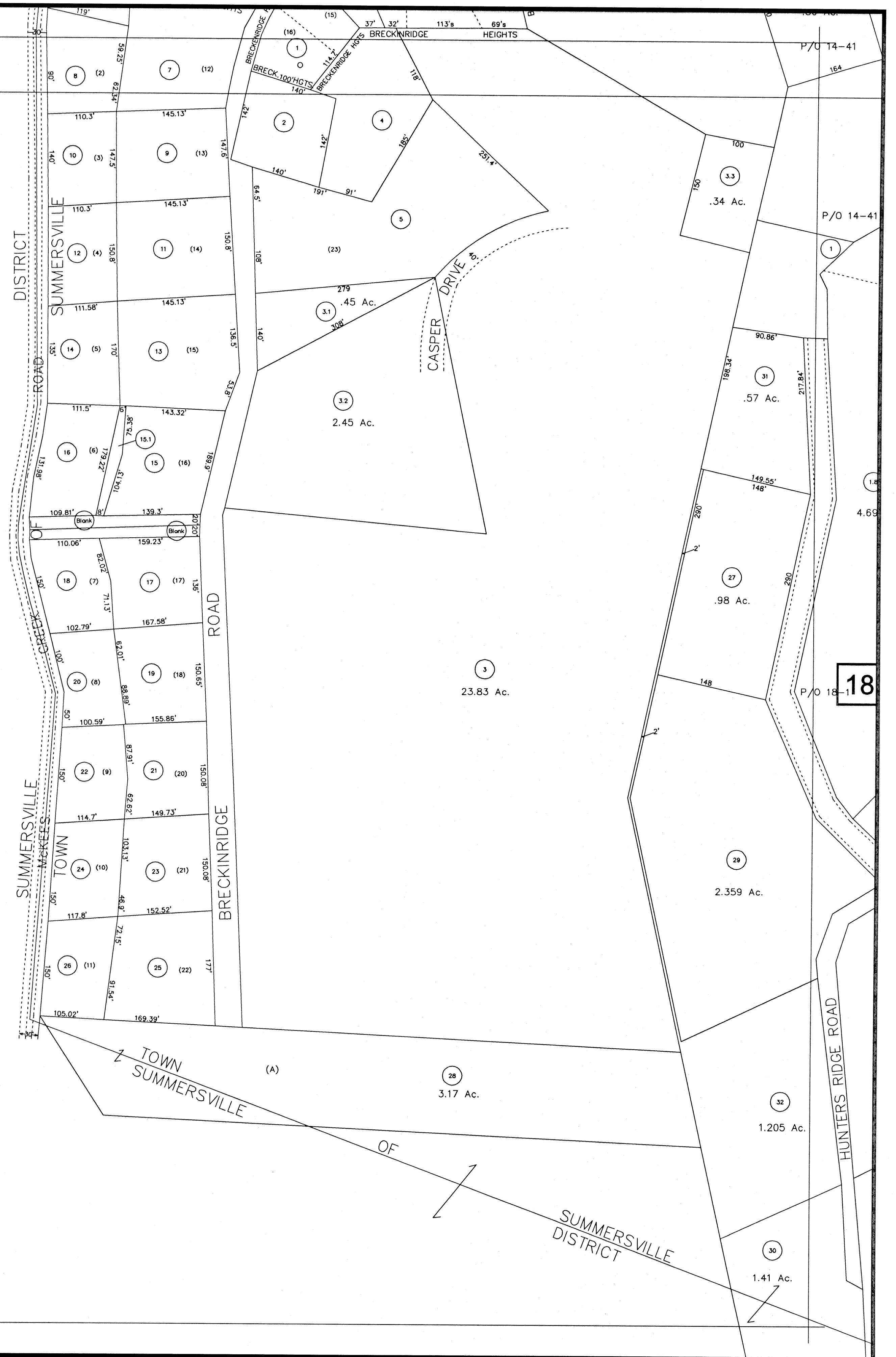


SEE 26



FOR TAX PURPOSE ONLY

PREPARED BY
ERNIE DENNISON
 NICHOLAS COUNTY ASSESSOR



Legend	
Property line	—————
Edge of pavement or roadway	—————
Corporation line	—————
District line	—————
County line	—————
Original lot line	—————
Deed lot number in parenthesis	(15)
Parcel or index number	99
Improvement	•
Railroad	—————

Revisions		
1	1-28-2005	TER
2		
3		
4		
5		
6		
7		

NICHOLAS COUNTY - WEST VIRGINIA
 Office of Assessor

CITY OF SUMMERSVILLE
 City - Town - District

17

Map No: _____
 Date, Aerial Photography: 4-20-61 Date, Map: 3-29-62
 Photo No: _____ Scale: 1"=100'