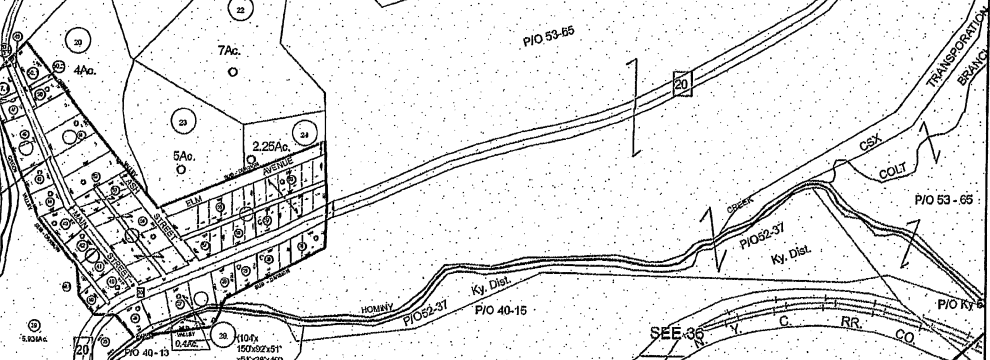


INSET



For Tax Purposes Only
 Prepared By:
ERNIE DENNISON
NICHOLAS COUNTY ASSESSOR

Legend

Water	Roads	Boundary
Swamp	Railroad	Corp. Boundary
Water	Road_Dashed	Map
	Roads	TaxParcels
		PRINT-GRID#2

West Virginia Legislative Regulations
 Property Valuation Training and Procedures Commission
 Title 189 Series 5 Article 5 Section 5.1
 Reproduction of tax maps prohibited
 No person may reproduce, copy, distribute
 or sell copies of tax maps prepared by the
 counties without having first obtained the
 written permission of the County Assessor.

NICHOLAS COUNTY
 WEST VIRGINIA
 Office Of Assessor

9.30	9.31-5.49	5.50
9.35		5.53
9.39	9.40	

Wilderness
36
 1 inch = 400 feet
 Revised: Apr 25, 2012