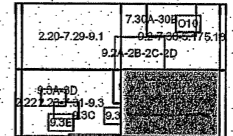


For Tax Purposes Only  
 Prepared By:  
**ERNIE DENNISON**  
 NICHOLAS COUNTY ASSESSOR

Legend	
Water	all other values
Sub_Type	Sub_Type
Swamp	RailRoad
Water	Road_Dashed
	Roads
	all other values
	Boundary
	Corp_Boundary
	Map
	Map_Boundary
	TaxParcels
	PRINT COPY

West Virginia Legislative Regulations  
 Property Valuation Training and Procedures Commission  
 Title 109 Series 5 Article 5 Section 5.1  
 Reproduction of tax maps prohibited  
 No person may reproduce, copy, distribute  
 or sell copies of tax maps prepared by the  
 counties without having first obtained the  
 written permission of the County Assessor.

**NICHOLAS COUNTY**  
 WEST VIRGINIA  
 Office Of Assessor



**Wilderness**  
**4**  
 1 inch = 400 feet  
 Revised: Apr 25, 2012