

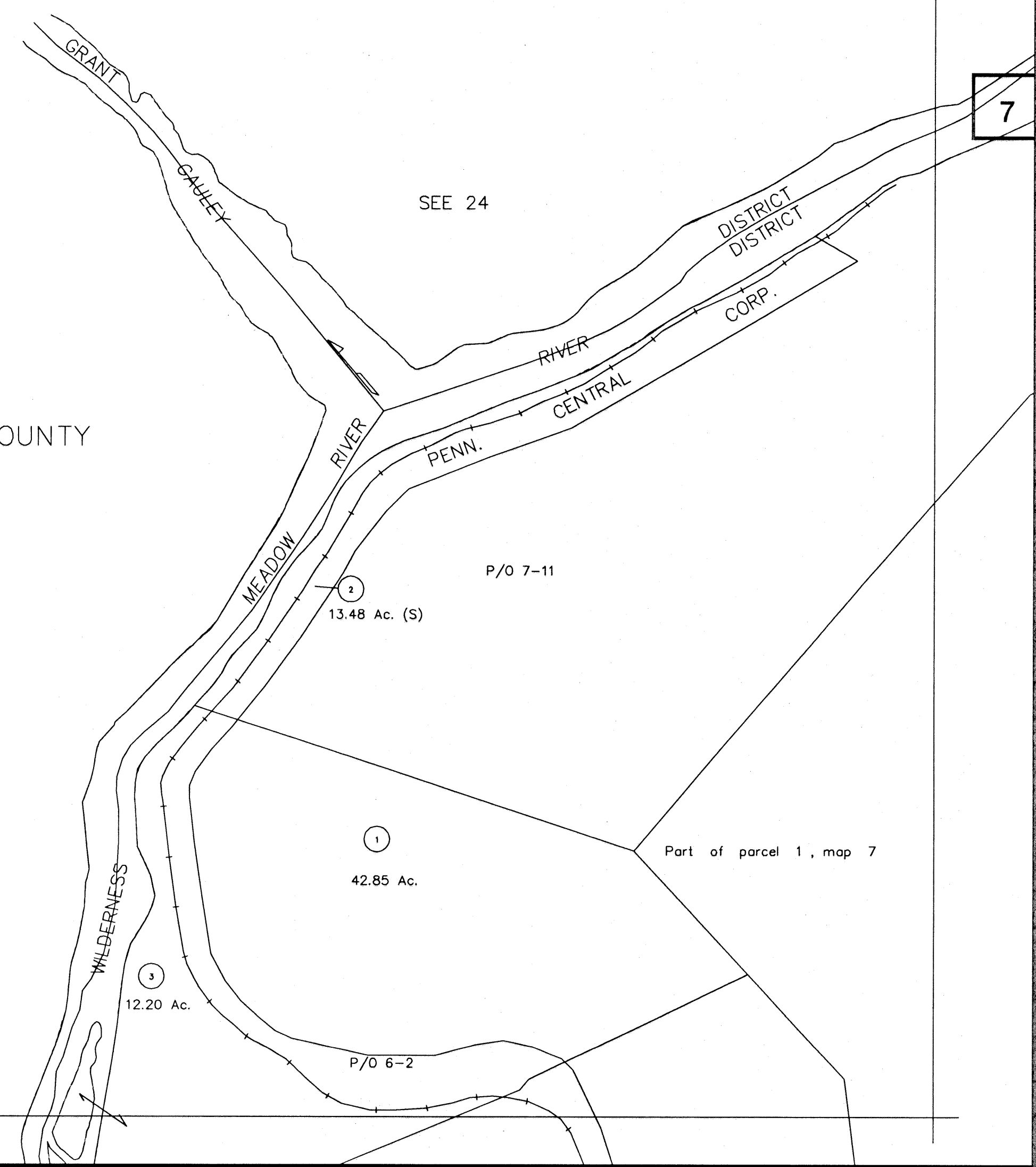
0

0

7

12

FAYETTE COUNTY



FOR TAX PURPOSE ONLY
 PREPARED BY
ERNIE DENNISON
 NICHOLAS COUNTY ASSESSOR



Legend	
Property line	—————
Edge of pavement or roadway	—————
Corporation line	—————
District line	—————
County line	—————
Original lot line	—————
Deed lot number in parenthesis (15)	
Parcel or index number 99	
Improvement	•
Railroad	—————

Revisions	
1	5-2-2003 TER
2	1-24-2005 TER
3	
4	
5	
6	
7	

NICHOLAS COUNTY - WEST VIRGINIA
 Office of Assessor

WILDERNESS DISTRICT
 City - Town - District
6
 Map No:
 Date, Aerial Photography: 4-20-61 Date, Map: 7-19-62
 Photo No: Scale: 1"=400'