



FOR TAX PURPOSES ONLY

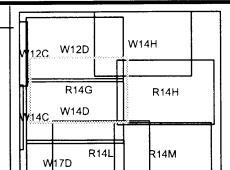
Prepared By:
Kathie Hoffman
 Ohio County Assessor

Legend	
Property Line	—————
Edge of pavement or roadway	—————
Corporation line	—————
District line	—————
County Line	—————

Original Lot Line	—————
Deed lot number (in parenthesis)	(15)
Parcel or index number	MAP-15
Improvement	○
Railroad	—————

Restriction

All tax maps created under the provisions of reappraisal legislation are the property of the Assessor of Ohio County, West Virginia and the reproduction, copying, modification, distributor sale of such tax maps or any copies thereof without the written permission of the Ohio County Assessor is prohibited by law.



OHIO COUNTY - WEST VIRGINIA
 Office of Assessor

Map No: R14G
 Drawn By: David Weaver
 Date: May 11, 2009
 Scale: 1 inch = 100 feet