



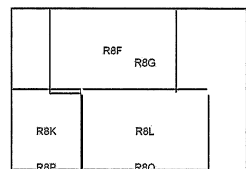
**FOR TAX PURPOSES ONLY**

Prepared By:  
**Greg Kloepfner**  
 Ohio County Assessor

Legend	
Property Line	—————
Edge of pavement or roadway	- - - - -
Corporation line	· · · · ·
District line	- · - · -
County Line	- - - - -
Original Lot Line	—————
Deed lot number (in parenthesis)	(15)
Map - Parcel number	MAP-15
Improvement	○
Railroad	—————

**Restriction**

All tax maps created under the provisions of reappraisal legislation are the property of the Assessor of Ohio County, West Virginia and the reproduction, copying, modification, distribution or sale of such tax maps or any copies thereof without the written permission of the Ohio County Assessor is prohibited by law.



**OHIO COUNTY - WEST VIRGINIA**  
 Office of Assessor

Map No: **R8G**  
 Drawn By: **David Weaver**  
 Date: **May 20, 2008**  
 Scale: 1 inch equals 100 feet

**R8G**