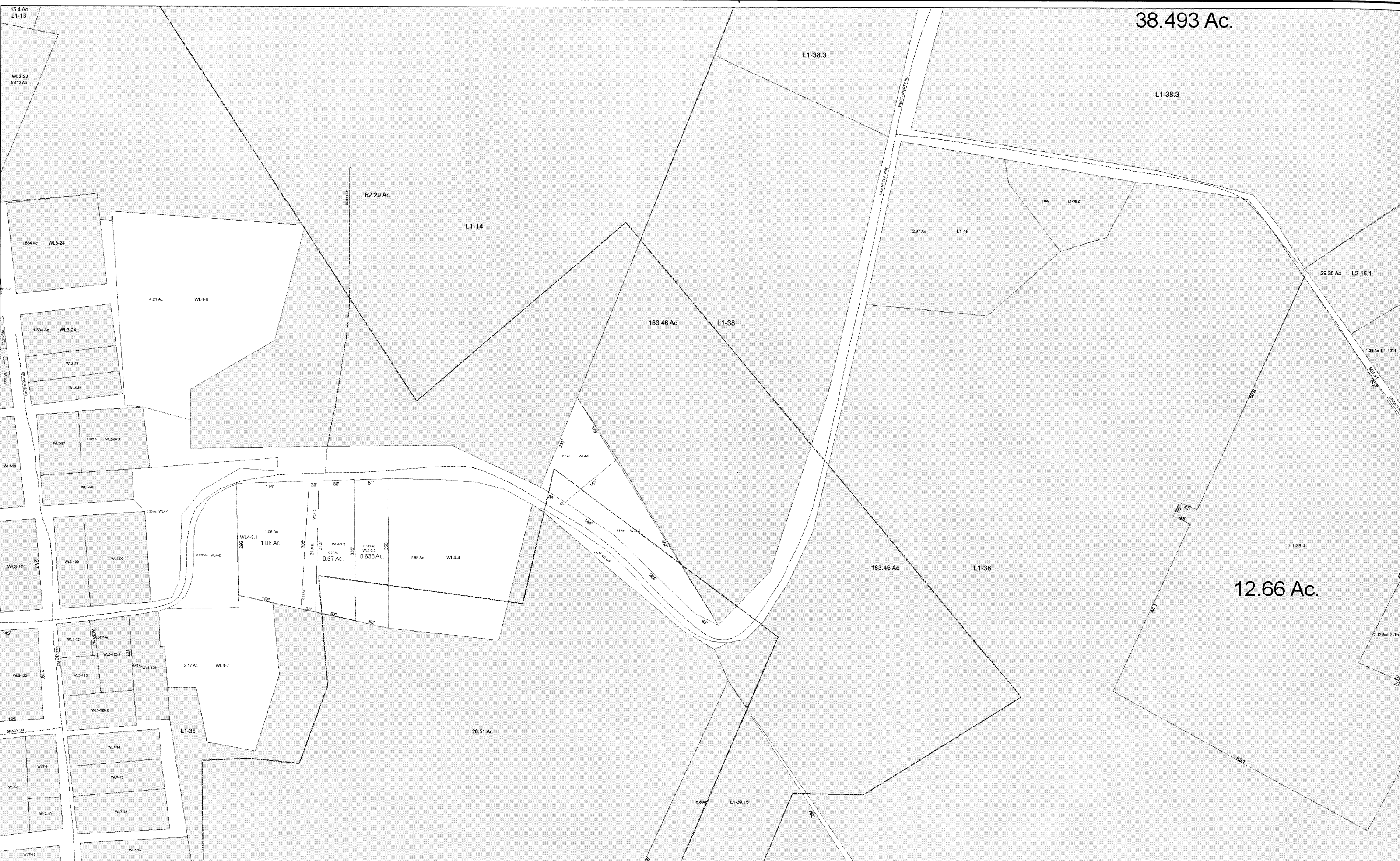


38.493 Ac.



**FOR TAX PURPOSES ONLY**

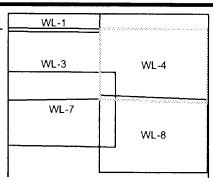
Prepared By:  
**Kathie Hoffman**  
 Ohio County Assessor

Legend	
Property Line	—
Edge of pavement or roadway	- - - -
Corporation line	— · — · —
District line	- · - · -
County Line	- - - - -

Original Lot Line	(15)
Deed lot number (in parenthesis)	MAP-15
Parcel or index number	○
Improvement	—
Railroad	—+—+—+—


**Restriction**

All tax maps created under the provisions of reappraisal legislation are the property of the Assessor of Ohio County, West Virginia and the reproduction, copying, modification, distribution or sale of such tax maps or any copies thereof without the written permission of the Ohio County Assessor is prohibited by law.



OHIO COUNTY - WEST VIRGINIA  
 Office of Assessor

Map No: WL-4  
 Drawn By: David Weaver  
 Date: Jun 05, 2009  
 Scale: 1 inch = 100 feet