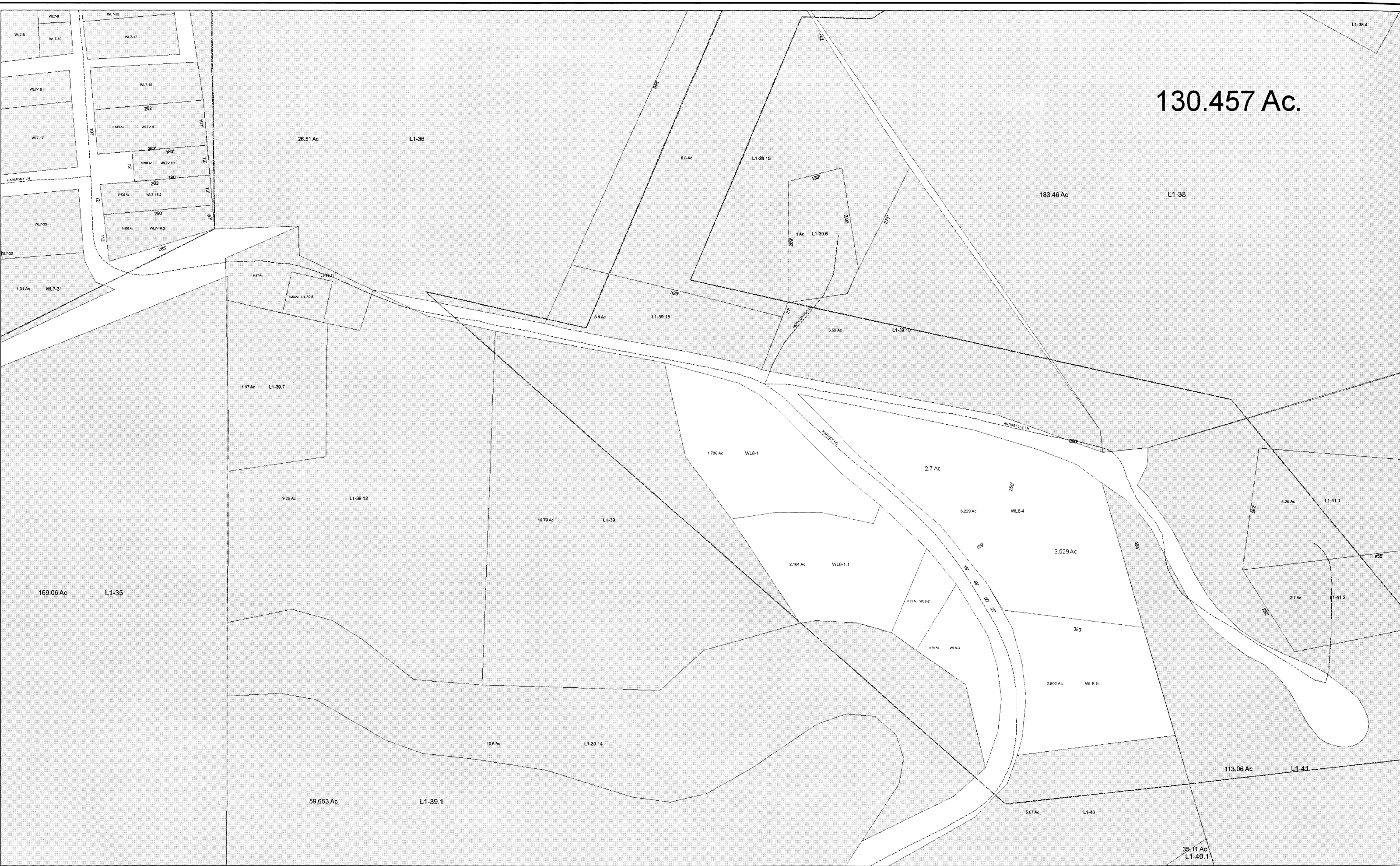


130.457 Ac.



FOR TAX PURPOSES ONLY

Prepared By:

Kathie Hoffman

Ohio County Assessor

Legend

Property Line	—————	Original Lot Line	—————
Edge of pavement or roadway	- - - - -	Deed lot number (in parenthesis)	(15)
Corporation line	Parcel or index number	MAP-15
District line	Improvement	○
County Line	Railroad	———

Restriction

All tax maps created under the provisions of reappraisal legislation are the property of the Assessor of Ohio County, West Virginia and the reproduction, copying, modification, distribution or sale of such tax maps or any copies thereof without the written permission of the Ohio County Assessor is prohibited by law.

WL-1	
WL-3	WL-4
WL-7	WL-8

OHIO COUNTY - WEST VIRGINIA

Office of Assessor

Map No: WL-8
Drawn By: David Weaver
Date: Jun 05, 2009
Scale: 1 inch = 100 feet