



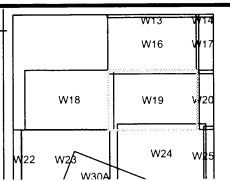
FOR TAX PURPOSES ONLY

Prepared By:
Kathie Hoffman
 Ohio County Assessor

Legend	
Property Line	—
Edge of pavement or roadway	- - - - -
Corporation line	· · · · ·
District line	- - - - -
County Line	- - - - -
Original Lot Line	—
Deed lot number (in parenthesis)	(15)
Parcel or index number	MAP-15
Improvement	○
Railroad	—+—+—+—

Restriction

All tax maps created under the provisions of reappraisal legislation are the property of the Assessor of Ohio County, West Virginia and the reproduction, copying, modification, distribution or sale of such tax maps or any copies thereof without the written permission of the Ohio County Assessor is prohibited by law.



OHIO COUNTY - WEST VIRGINIA
 Office of Assessor

Map No: W19
Drawn By: David Weaver
Date: Jun 02, 2009
Scale: 1 inch = 100 feet