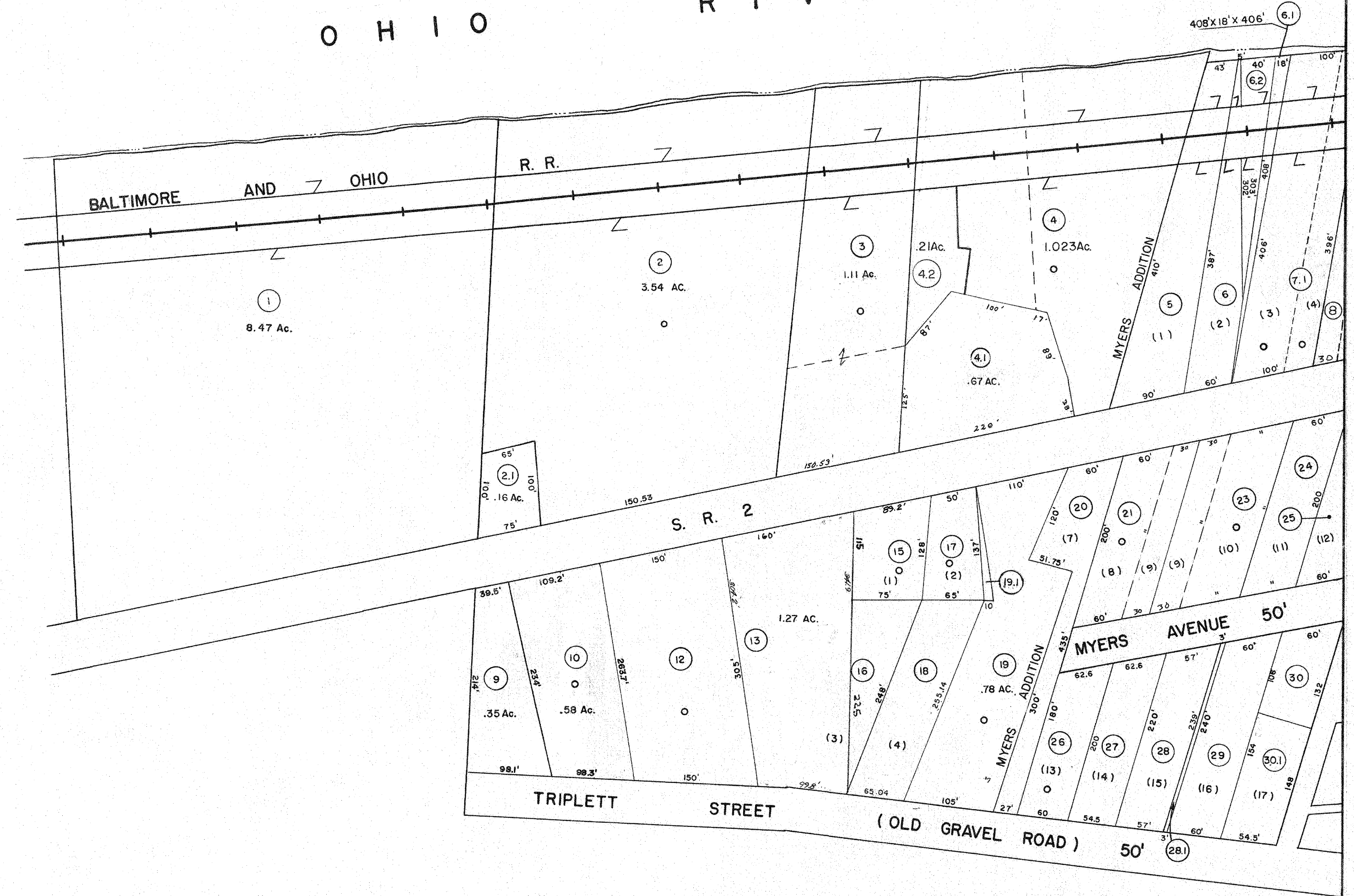


O H I O R I V E R



For Tax Purposes Only

Prepared by  
**PHOTRONIX, INCORPORATED**  
 790 King Avenue Columbus, Ohio

**Legend**

Property line	---	-	-
Edge of pavement or roadway	---	-	-
Corporation line	---	-	-
District line	---	-	-
County line	---	-	-
Original lot line	---	-	-
Deed lot number in parenthesis	(5)	-	-
Parcel or index number in circle	(41)	-	-
Improvement	○	-	-

**Revisions**

1	REVISED TO MARCH 1965 11h	9	7-1-85	C.P.	17
2	11-20-73	10	5-1-87	TRL	18
3	8-7-75	11	3/23/06	HAS	19
4	11-2-77	12	2-20-11	++S	20
5	10-17-79	13	2/17/13	SBH	21
6	Revised to 7.00	14	2/17/17	SLS	22
7	7-1-83	15			23
8	7-1-84	16			24

**PLEASANTS COUNTY, WEST VIRGINIA**

Office of Assessor

**BELMONT**

City — Town — District:  
 Map No. 1  
 Date, Aerial Photography 4-7-59 Date, Map: 11-30-1960  
 Photo No. 98 Map Scale: 1" = 100'