

For Tax Purposes Only

Prepared by

PHOTRONIX, INCORPORATED

790 King Avenue Columbus, Ohio

Legend

Property line
Edge of pavement or roadway
Corporation line
District line
County line
Original lot line
Dead lot number in parenthesis
Parcel or index number in circle
Improvement

1	2	3	4	5	6
---	---	---	---	---	---

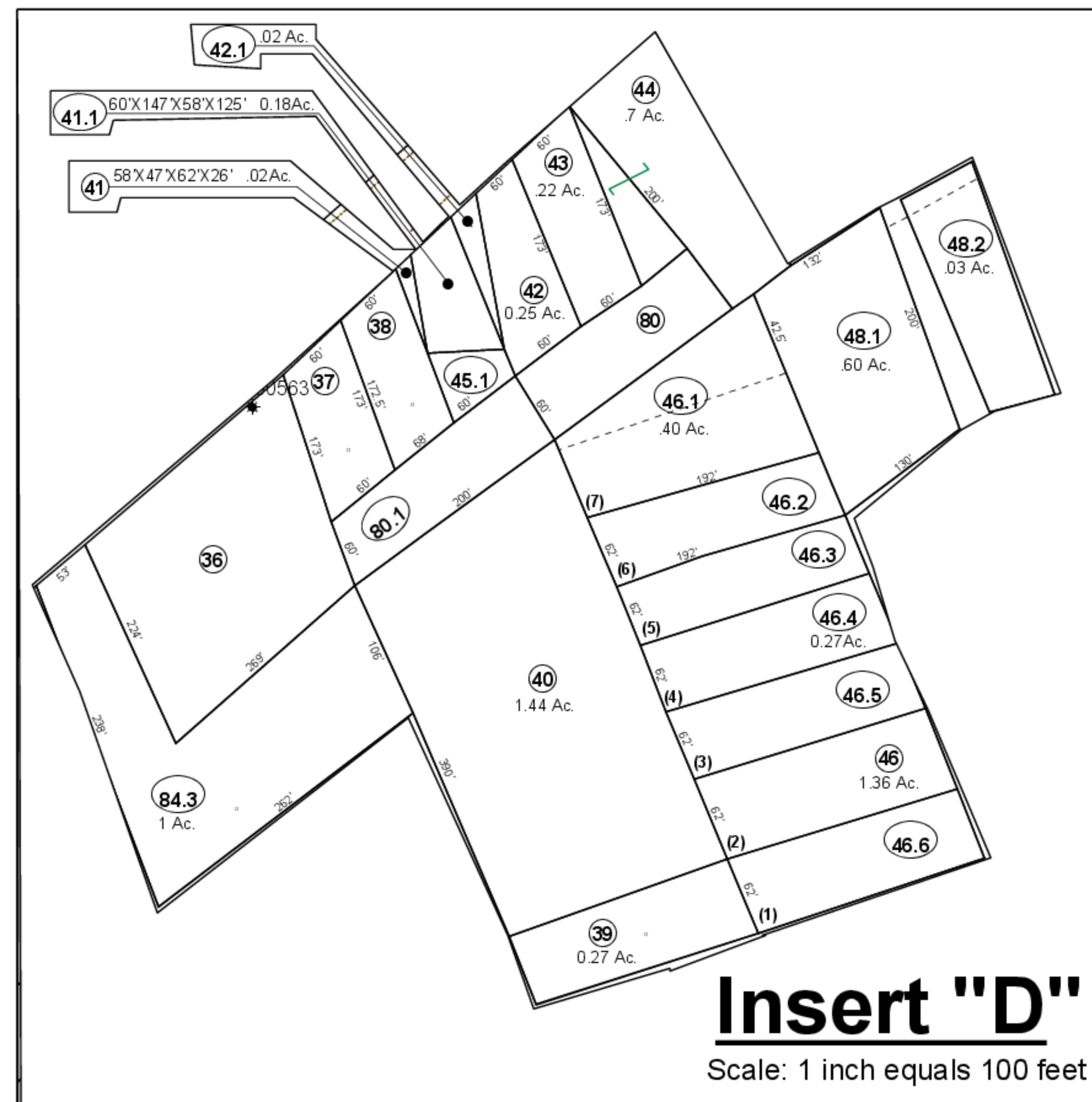
Revisions

1	REVISED TO MARCH 1965 rds	9	REV. TO 7-1-96	VCS	17	SLS INC. 2/22/99	DSW	
2	11-29-73	36			18	EBI	3/21/01	REK
3	9-2-75	36			19	EBI	5/19/02	REK
4	11-3-77	36			20	ERI	2/22/03	REK
5	10-19-79	36			21	HSS	2/24/04	
6	Original to 7-1-96	36			22	DSH	4/9/05	S&H
7	7-1-96	36			23	RB	1/28/12	S&H
8	7-1-96 C.P.	36			24	SLS INC.	2/18/28	DSW

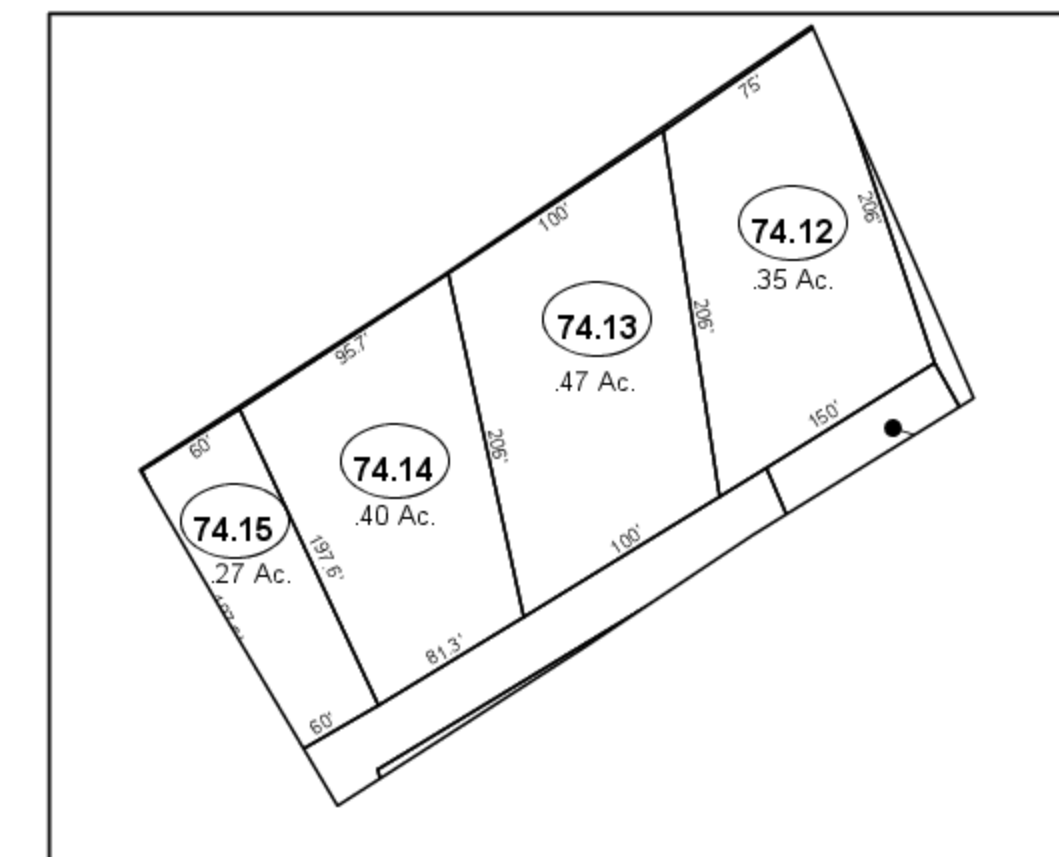
PLEASANTS COUNTY, WEST VIRGINIA
Office of Assessor

GRANT

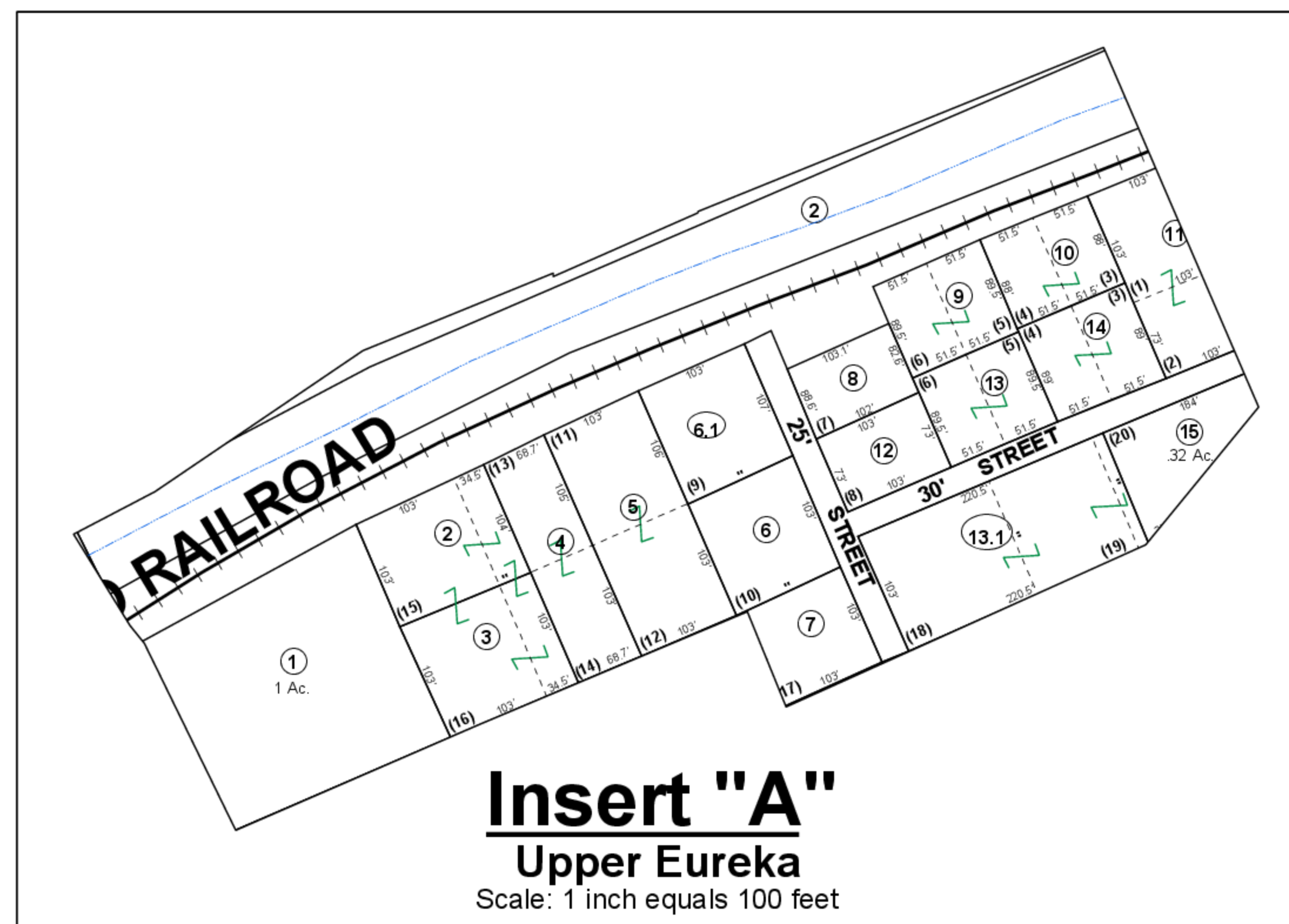
City - Town - District:
Map No. 2
Date, Aerial Photography: 4-7-59 Date, Map: 6-22-60
Photo No. 22, 23 Map Scale: 1" = 400'



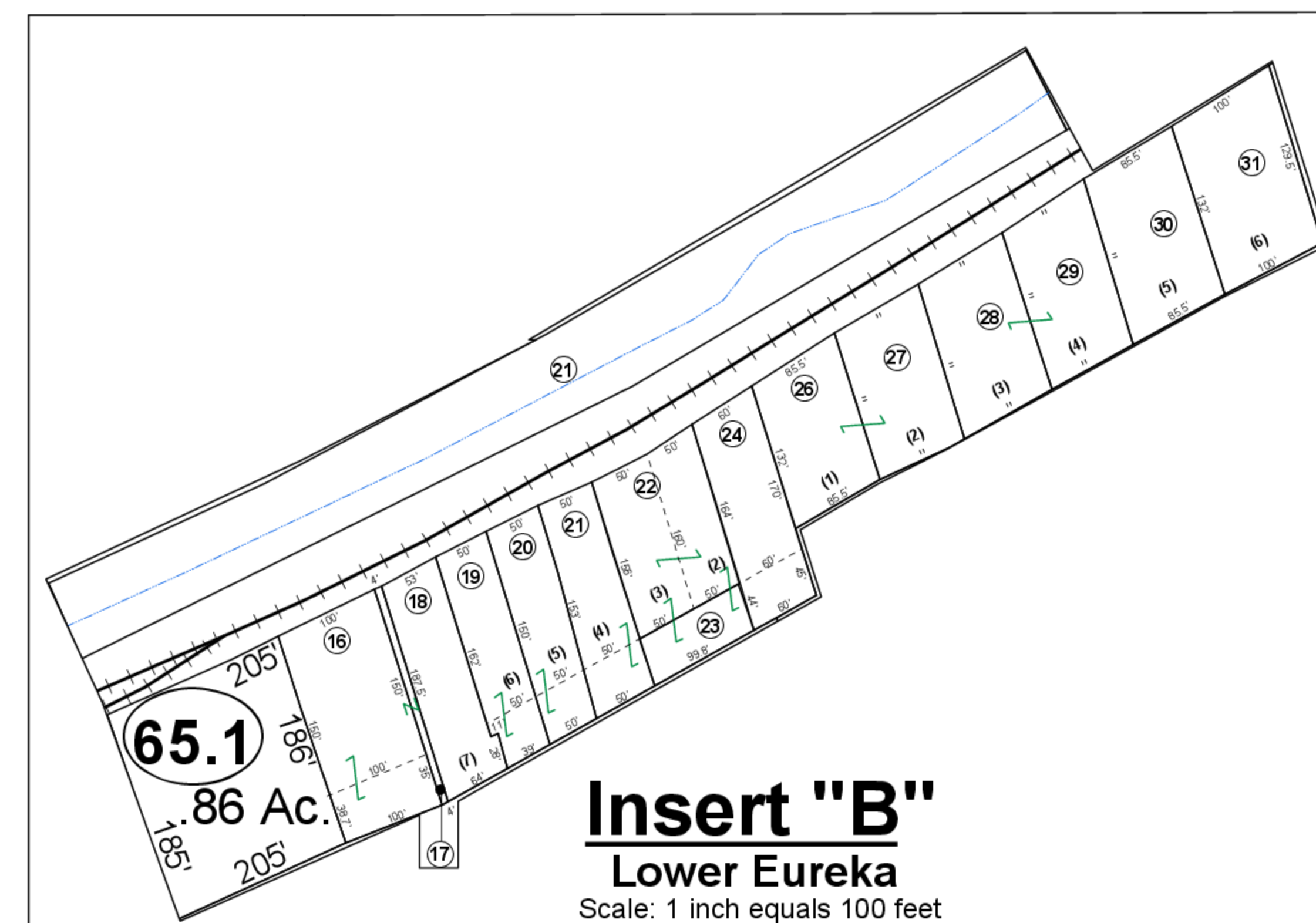
Insert "D"
Scale: 1 inch equals 100 feet



Insert "C"
Scale: 1 inch equals 100 feet



Insert "A"
Upper Eureka
Scale: 1 inch equals 100 feet



Insert "B"
Lower Eureka
Scale: 1 inch equals 100 feet

Legend	
Property Line	—
Edge of pavement or roadway	- - - - -
Corporation line	- · - · -
District line	- - - - -
County Line	- - - - -
Original Lot Line	—
Deed lot number (in parenthesis)	(15)
Parcel or index number	⑮
Improvement	○
Railroad	—

Restriction
All finished tax maps created under the provisions of legislation are the property of the county assessor who created them and the reproduction, copying, distribution, sale, or lease of such tax maps or copies thereof without the written permission of the Pleasants County Assessor is prohibited by law. The State Department of Revenue is hereby designated as an agent for all counties for the purpose of sale, production and distribution of the tax maps.

Key Map		
—	—	1
—	2	3
4	5	6