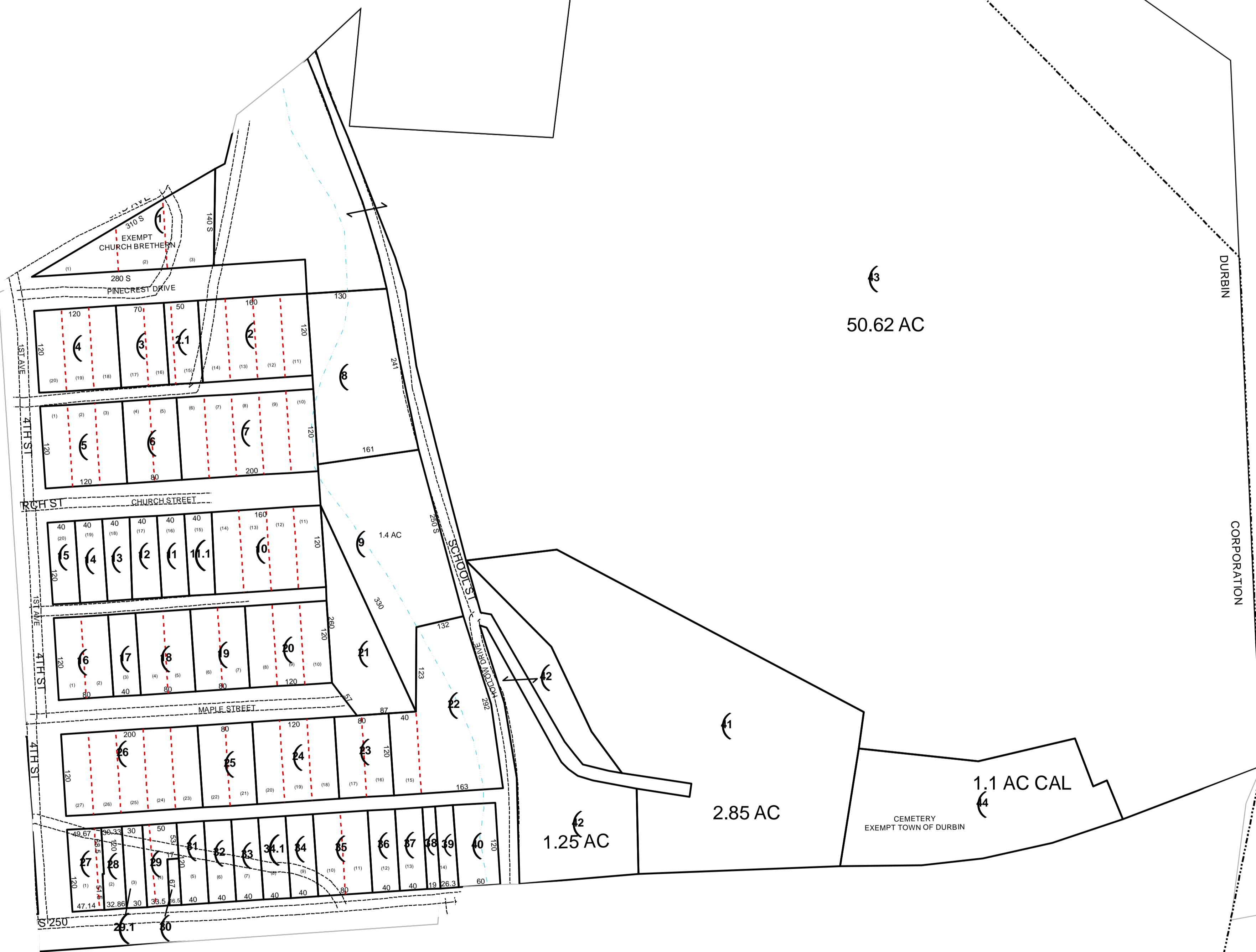


# 3

3

2

5



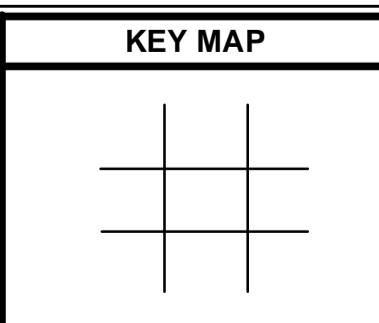
**For Tax Purposes Only**  
Prepared by  
**POCAHONTAS COUNTY ASSESSOR**  
MARLINTON, WV

Legend	
PARCEL BOUNDARY	———
CORPORATION BOUNDARY	-----
DISTRICT BOUNDARY	- - - - -
COUNTY BOUNDARY	-----
RIGHT OF WAY	=====

Legend	
ORIGINAL LOT LINE	- - - - -
PARCEL NUMBER	(6)
DEED LOT NUMBER	(15)
MATCH LINE	- - - - -
IMPROVEMENT	○
RAILROAD	—+—+—+—

Revisions	
1	Oct 15, 2007
2	
3	
4	
5	
6	
7	

**RESTRICTION**  
All tax maps created under the provisions of reappraisal legislation are the property of the Pocahontas County Assessor's Office and the reproduction, copying, distribution or sale of such tax maps without the written permission of the State Tax Commissioner or the Assessor of Pocahontas County is prohibited by law.



**COUNTY OF POCOHONTAS**  
OFFICE OF ASSESSOR  
Marlinton, W. Va.

**Durbin Corporation**  
District **02 Durbin** Map No. **4**  
Date, Aerial Photography: Date, Map:  
Photo No: Scale: 1" = 100'