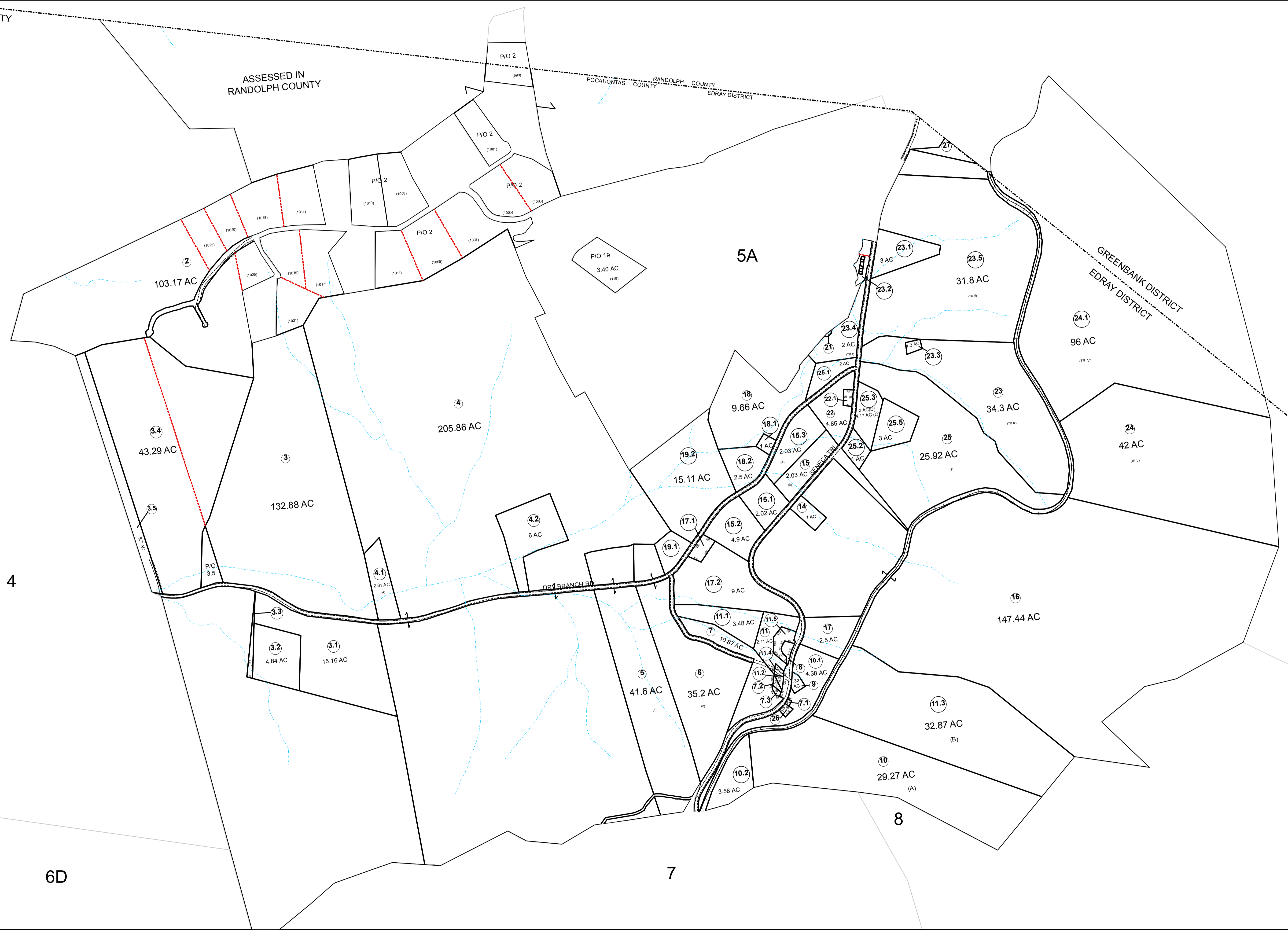
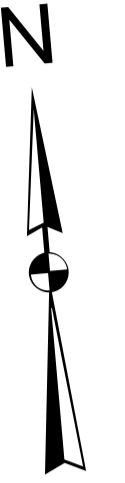


POCAHONTAS COUNTY

ASSESSED IN
RANDOLPH COUNTY

RANDOLPH COUNTY
POCAHONTAS COUNTY
EDRAY DISTRICT



For Tax Purposes Only

Prepared by
POCAHONTAS COUNTY ASSESSOR
MARLINTON, WV

Legend

PARCEL BOUNDARY	———	ORIGINAL LOT LINE	- - - - -
CORPORATION BOUNDARY	—————	PARCEL NUMBER	(15)
DISTRICT BOUNDARY	DEED LOT NUMBER	(15)
COUNTY BOUNDARY	-----	MATCH LINE	- - - - -
RIGHT OF WAY	=====	IMPROVEMENT	○
		RAILROAD	—+—

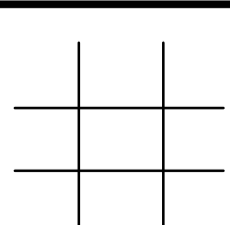
Revisions

1	Oct 15, 2007
2	March 23, 2009
3	
4	
5	
6	
7	

RESTRICTION

All tax maps created under the provisions of reappraisal legislation are the property of the Pocahontas County Assessor's Office and the reproduction, copying, distribution or sale of such tax maps without the written permission of the State Tax Commissioner or the Assessor of Pocahontas County is prohibited by law.

KEY MAP



COUNTY OF POCAHONTAS

OFFICE OF ASSESSOR
Marlinton, W. Va.

EDRAY DISTRICT

District 03 Edray Map No. 5

Date, Aerial Photography: Date, Map: Photo No: Scale: 1" = 400'