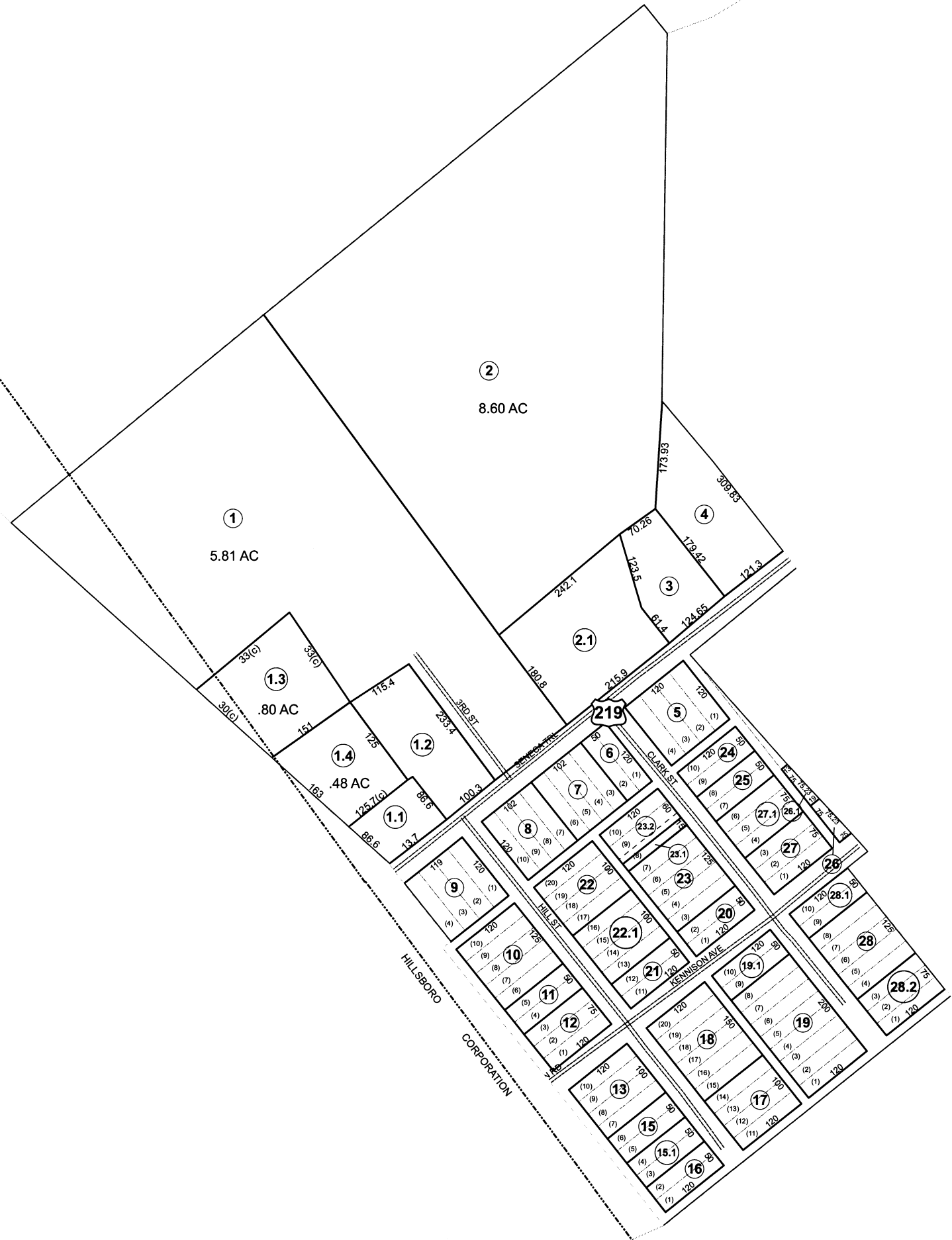




HILLSBORO CORP.



For Tax Purposes Only

Prepared by
POCAHONTAS COUNTY ASSESSOR
MARLINTON, WV

Legend

PARCEL BOUNDARY	---
CORPORATION BOUNDARY	----
DISTRICT BOUNDARY	-----
COUNTY BOUNDARY	- - - - -
RIGHT OF WAY	====

ORIGINAL LOT LINE	----
PARCEL NUMBER	⑮
DEED LOT NUMBER	(15)
MATCH LINE	- - - -
IMPROVEMENT	○
RAILROAD	—+—

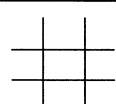
Revisions

1	Oct. 15, 2007
2	May 10, 2009
3	
4	
5	
6	
7	

RESTRICTION

All tax maps created under the provisions of reappraisal legislation are the property of the Pocahontas County Assessor's Office and the reproduction, copying, distribution or sale of such tax maps without the written permission of the State Tax Commissioner or the Assessor of Pocahontas County is prohibited by law.

KEY MAP



COUNTY OF POCAHONTAS

OFFICE OF ASSESSOR
Marlinton, W. Va.

Little Levels District

District 07 Little Levels Map No. 30A

Date, Aerial Photography: Date, Map: Photo No: Scale: 1" = 100'