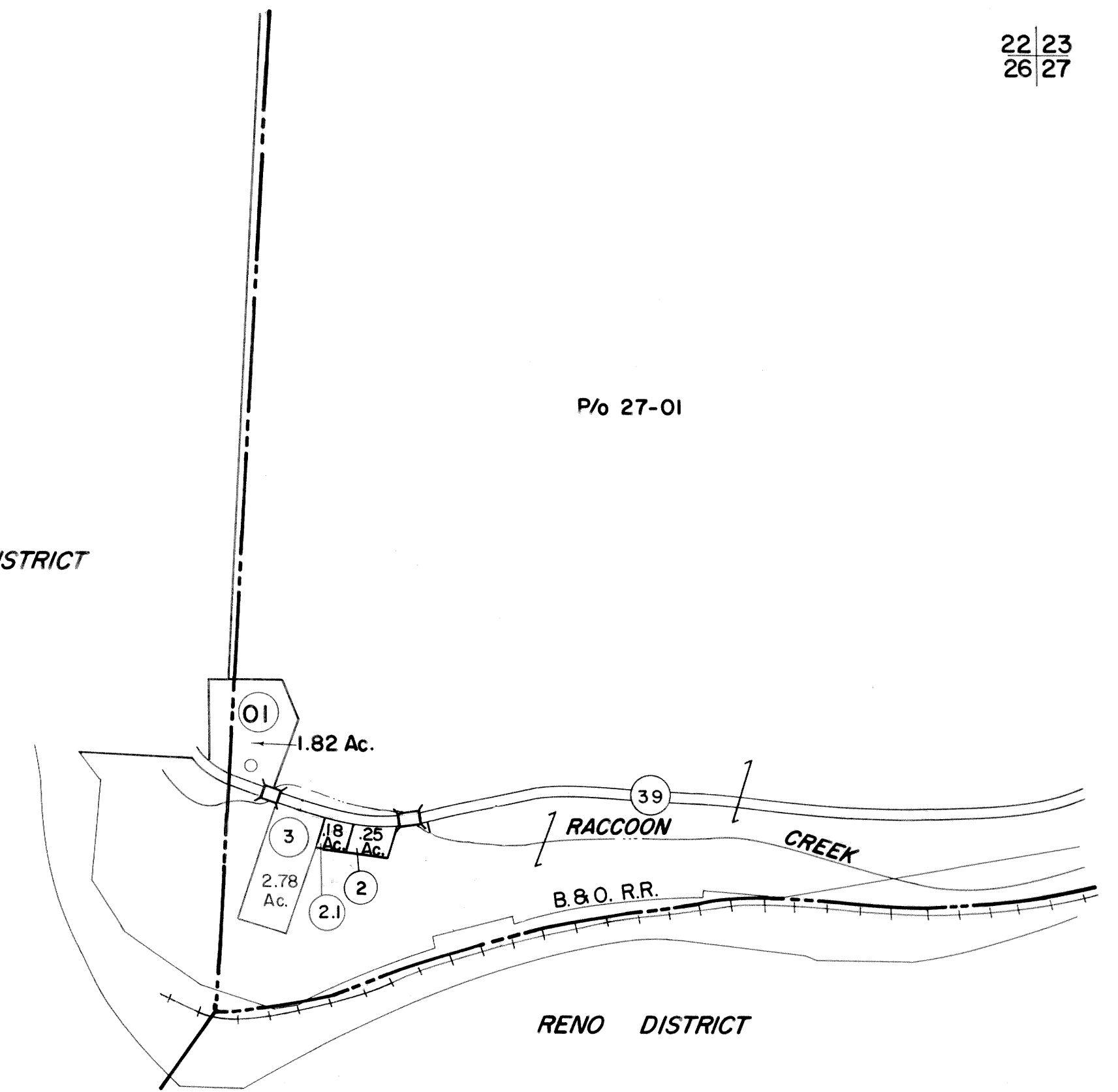


LYON DISTRICT

P/O 27-01



RENO DISTRICT

FOR TAX PURPOSES ONLY

Prepared by
L. ROBERT KIMBALL
Consulting Engineer
Ebensburg, Pennsylvania

Legend	
Property line	Original lot line
Edge of pavement or roadway	Deed lot number in parenthesis (15)
Corporation line	Parcel or index number in circle (25)
District line	Improvement
County line	Railroad

Revisions	
1	Revised to 7-1-81
2	Revised to 7-1-83
3	July, 1985
4	July, 1986
5	ESI 1/18/01 REK
6	
7	
8	

STATE OF WEST VIRGINIA
COUNTY OF PRESTON
Office of Assessor

KINGWOOD DISTRICT
SHEET 26

Date, Aerial Photography: APRIL, 1960
Photo No: 81
Date, Map: NOV., 1962
Scale: 1" = 400'