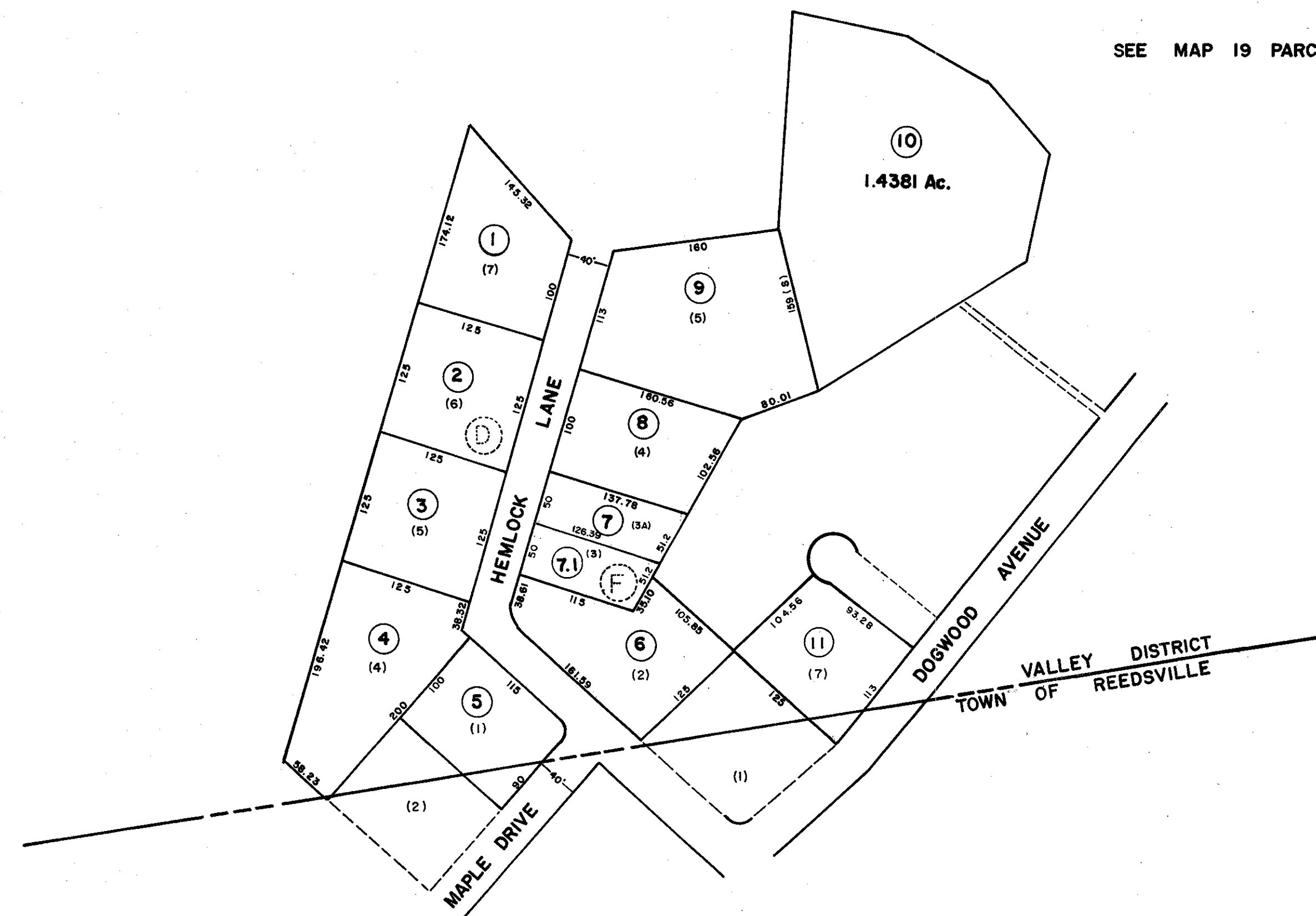


SEE MAP 19 PARCEL 34



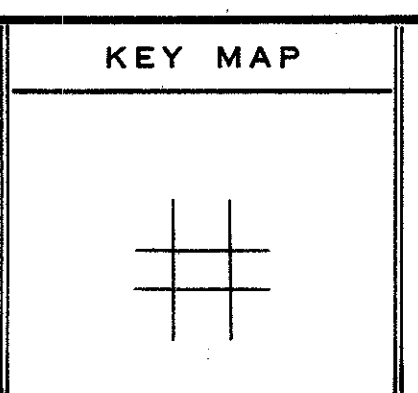
For Tax Purposes Only
 Prepared by
 LOCAL GOVERNMENT RELATIONS DIV.
 STATE TAX COMMISSIONER
 CHARLESTON, W.VA.

LEGEND	
Property line	Original lot line
Edge of pavement or roadway	Deed lot number (15)
Corporation line	Parcel or index number (15)
District line	Improvement
County line	Railroad

REVISIONS	
1	New Map to 7-181 DR. 1-26-83 D.E.F.
2	July, 1985 TRL
3	Revised to 7-1-86 D.F.
4	Revised to 7-1-88 D.F.
5	
6	
7	
8	

RESTRICTION

All tax maps created under the provisions of reappraisal legislation are the property of the State of West Virginia and the reproduction, copying, distribution or sale of such tax maps or any copies thereof without the written permission of the State Tax Commissioner is prohibited by law.



STATE OF WEST VIRGINIA
 COUNTY OF PRESTON
 Office of Assessor

VALLEY DISTRICT
 SHEET 19-A
 Date, Aerial Photography: Photo No:
 Date, Map: 10-13-82
 Scale: 1"=100'