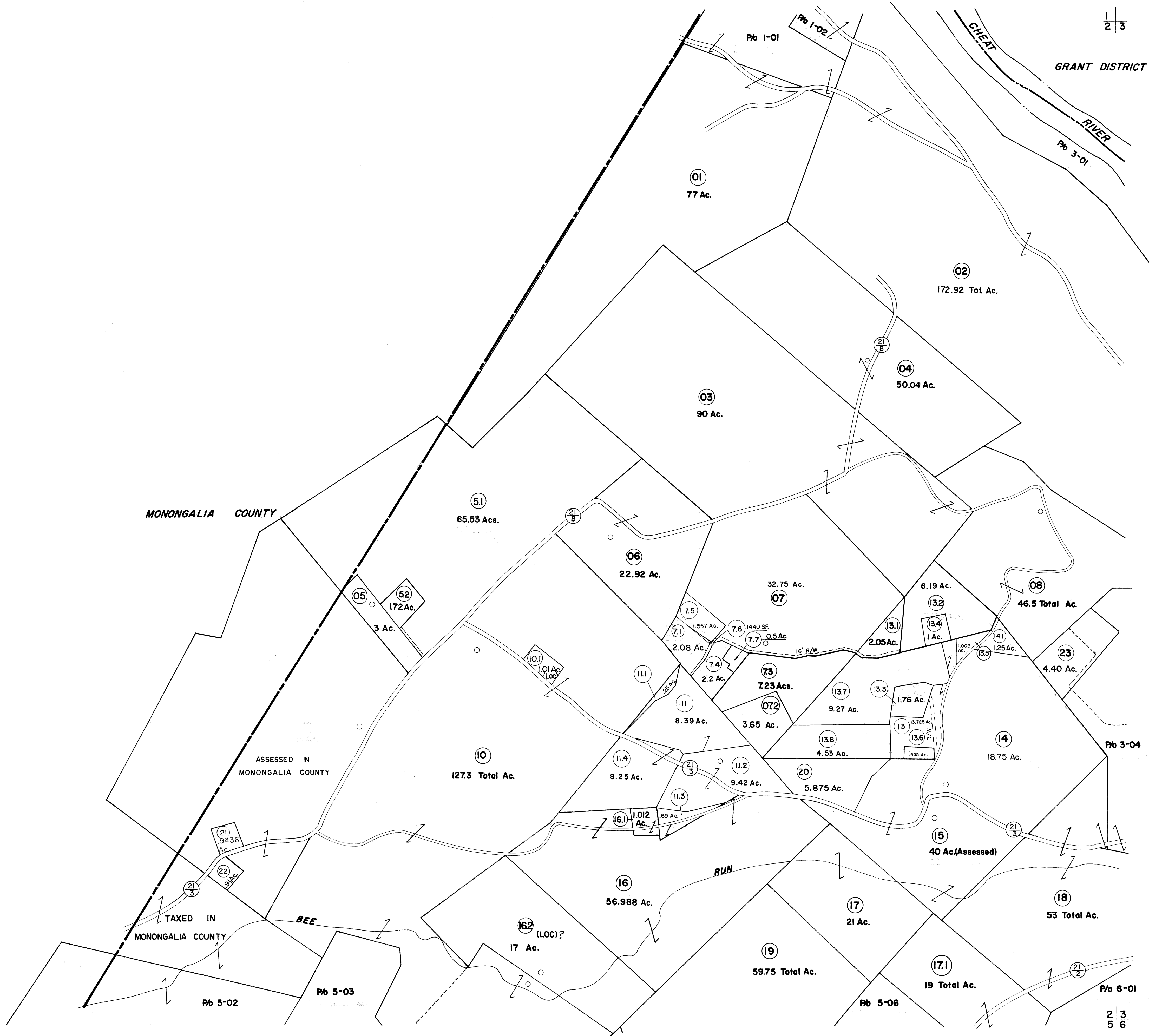


1/2

2/3

2/5

2/3
5/6



FOR TAX PURPOSES ONLY

Prepared by
L. ROBERT KIMBALL
Consulting Engineer
Ebensburg, Pennsylvania

Legend

Property line	Original lot line
Edge of pavement or roadway	Dead lot number in parenthesis (15)
Corporation line	Parcel or index number in circle (99)
District line	Improvement
County line	Railroad

Revisions

1	Revised to 7-1-81	9	O.G.I.S	1-1-97	J.E.B	17
2	REV. TO 7-1-83	10	SLS INC.	5/4/98	DSW	18
3	July 1985	11	SLS INC.	5/18/99	DSW	19
4	7-1-86	12	ESI	1/25/01	REK	20
5	Revised to 7-1-88	13	ESI	10/15/01	DH	21
6	Revised to 7-1-89	14	ESI	1/14/03	REK	22
7	OGIS	15				23
8	OGIS	16				24

STATE OF WEST VIRGINIA
COUNTY OF PRESTON
Office of Assessor

VALLEY DISTRICT
SHEET 02

Date, Aerial Photography: APRIL, 1960 Date, Map: OCT., 1962
Photo No: 97, 132 Scale: 1" = 400'