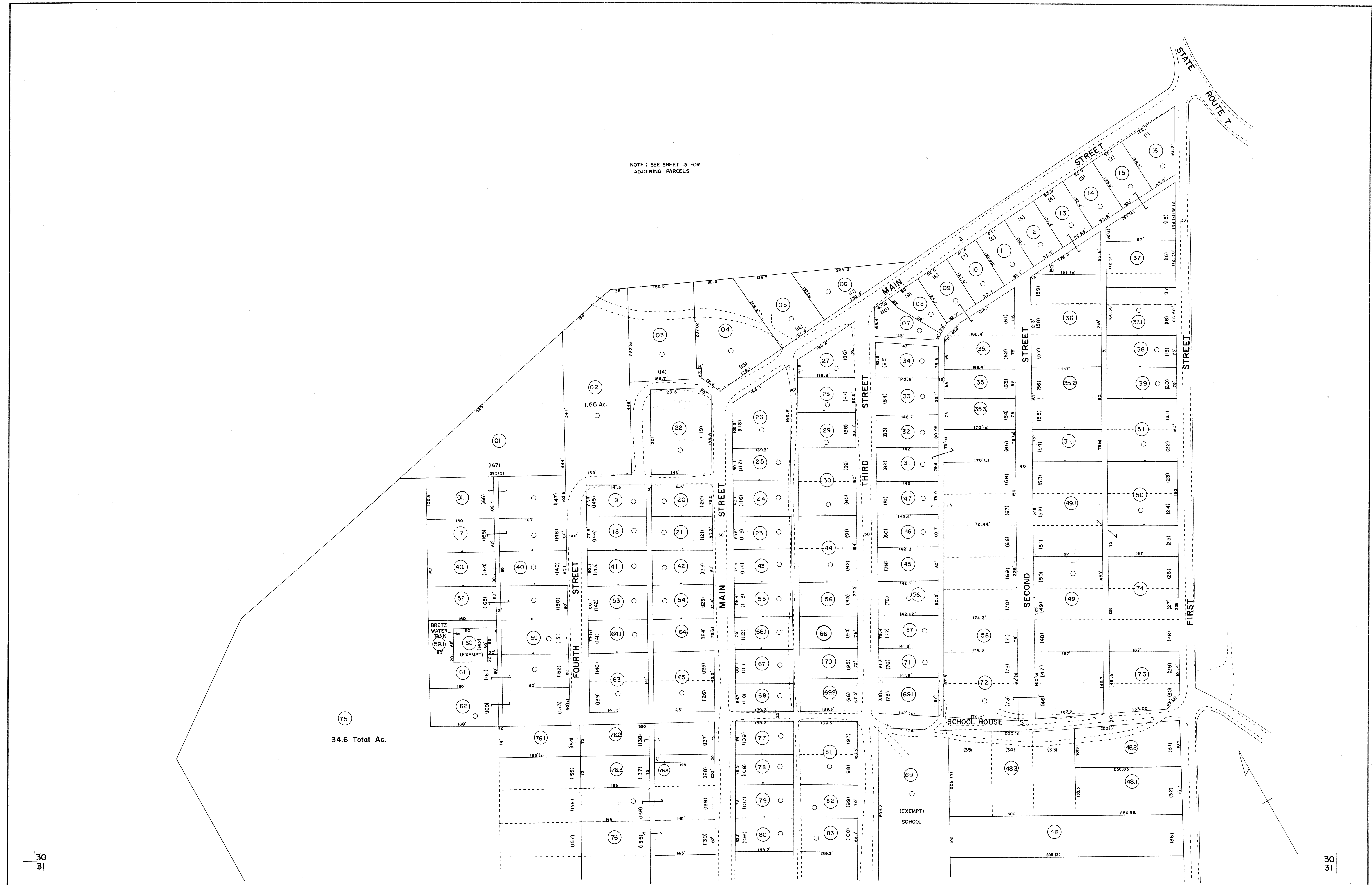


NOTE: SEE SHEET 13 FOR
ADJOINING PARCELS



FOR TAX PURPOSES ONLY

Prepared by
L. ROBERT KIMBALL
Consulting Engineer
Ebensburg, Pennsylvania

| Legend | |
|-----------------------------|----------------------------------|
| Property line | Original lot line |
| Edge of pavement or roadway | Dead lot number in parenthesis |
| Corporation line | Parcel or index number in circle |
| District line | Improvement |
| County line | Railroad |

| Revisions | |
|-----------|----------------------|
| 1 | REVISED 2/6/64 |
| 2 | 7/1/84 RLB |
| 3 | 9/24/91 DSH |
| 4 | 4-4-95 J.E.B |
| 5 | SLS INC. 5/19/99 DSW |
| 6 | SLS INC. 4/6/00 JAW |
| 7 | ESI 1/15/03 REK |

STATE OF WEST VIRGINIA
COUNTY OF PRESTON
Office of Assessor

VALLEY DISTRICT
(BRETZ)
SHEET 30

Date, Aerial Photography: APRIL, 1960 Date, Map: SEPT., 1962
Photo No: 701 Scale: 1" = 100'