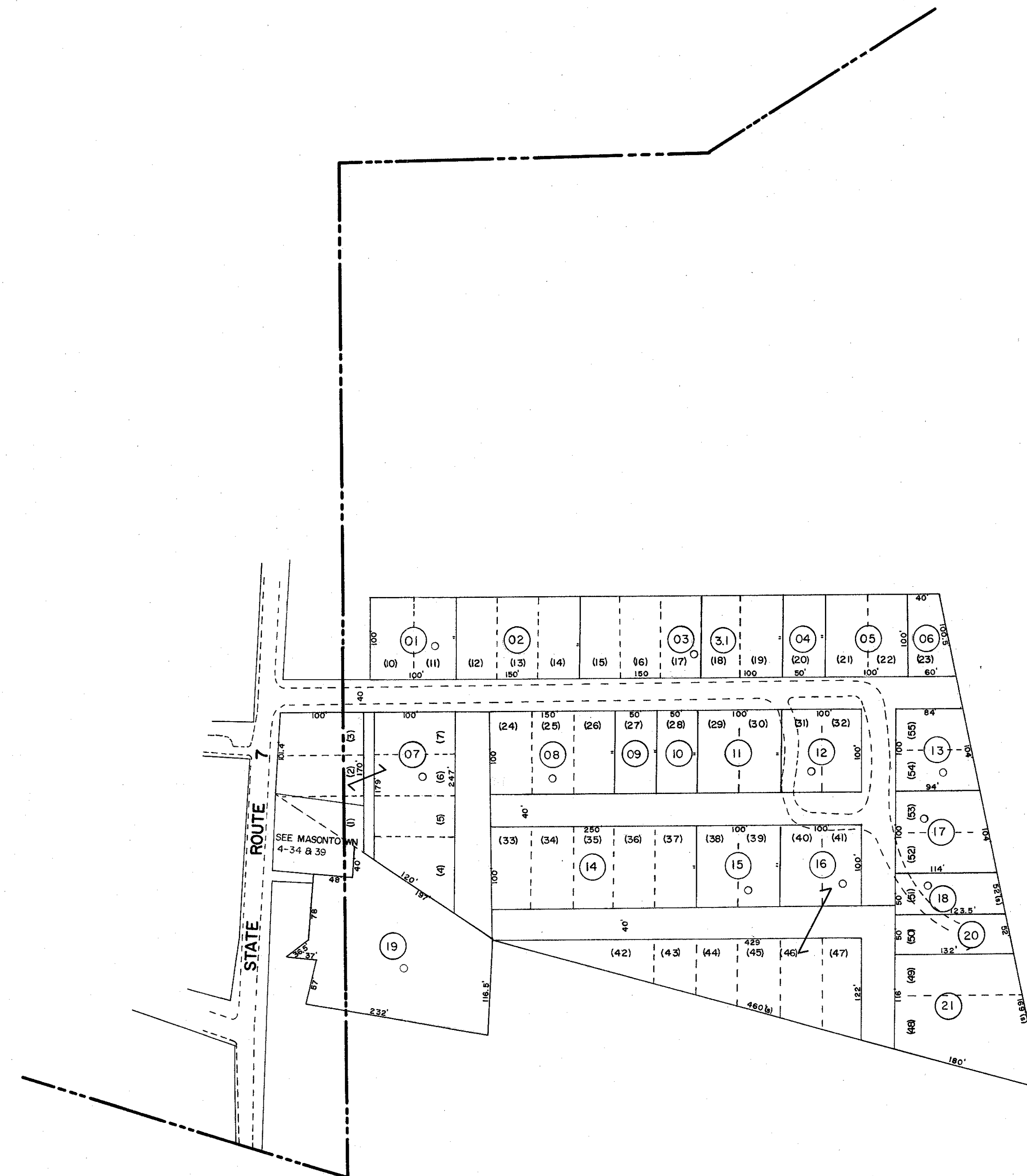


MASONTOWN  
CORPORATION



NOTE: SEE SHEET 13 FOR  
ADJOINING PROPERTIES

FOR TAX PURPOSES ONLY

Prepared by  
**L. ROBERT KIMBALL**  
Consulting Engineer  
Ebensburg, Pennsylvania

Legend

Property line	Original lot line
Edge of pavement or roadway	Deed lot number in parenthesis
Corporation line	Parcel or index number in circle
District line	Improvement
County line	Railroad

Revisions

1	REVISED 8/3/64	7	
2	Revised to 7-1-81	10	
3	7/1/84	11	RLB
4	Revised to 7-1-86	12	
5		13	
6		14	
7		15	
8		16	

STATE OF WEST VIRGINIA  
COUNTY OF PRESTON  
Office of Assessor

VALLEY DISTRICT  
SHEET 33

Date, Aerial Photography: APRIL, 1960  
Photo No: 704  
Date, Map: OCT, 1962  
Scale: 1"=100'