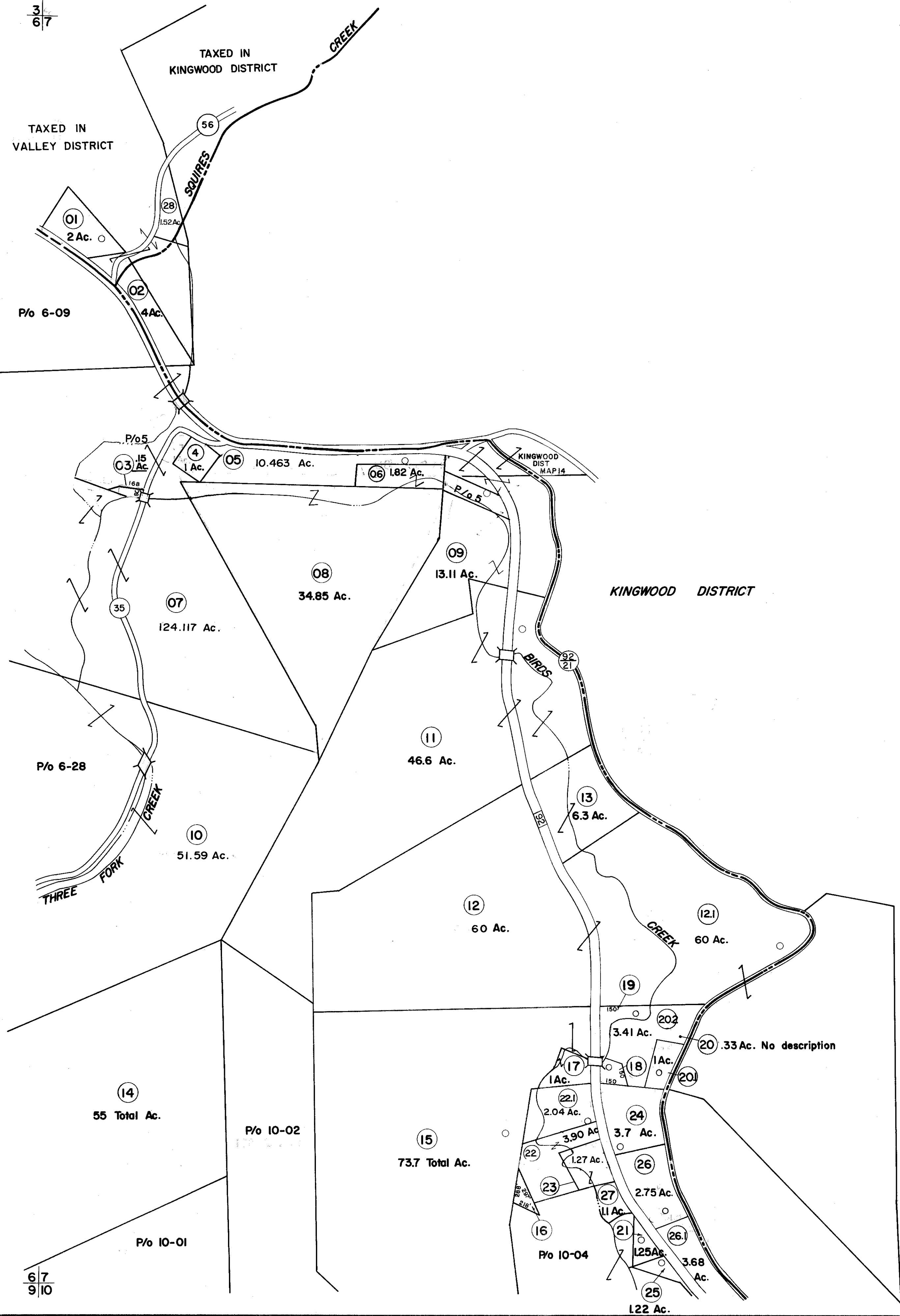


3
6/7

4
7



6
9/10

7
10

FOR TAX PURPOSES ONLY

Prepared by
L. ROBERT KIMBALL
Consulting Engineer
Ebensburg, Pennsylvania

Legend

Property line	Original lot line
Edge of pavement or roadway	Deed lot number in parenthesis (15)
Corporation line	Parcel or index number in circle (16)
District line	Improvement
County line	Railroad

Revisions

1	REVISED 2/3/64	9	OGIS 9/20/91	DSH	17
2	REVISED 5/25/64	10	OGIS 5-1-93	JEB	18
3	REV. 7-81 DR. 6-82 T. Groves	11	SLS INC. 5/4/98	DSW	19
4	7-1-83	12			20
5	Revised to 7-1-84	13			21
6	Revised to 7-1-85	14			22
7	7-1-86	15			23
8	7-1-88	16			24

STATE OF WEST VIRGINIA
COUNTY OF PRESTON
Office of Assessor

LYON DISTRICT
SHEET 07

Date, Aerial Photography: APRIL, 1960 Date, Map: NOV., 1962
Photo No: 59; 85 Scale: 1"=400'