

24 25  
30 31

25 26  
31 32

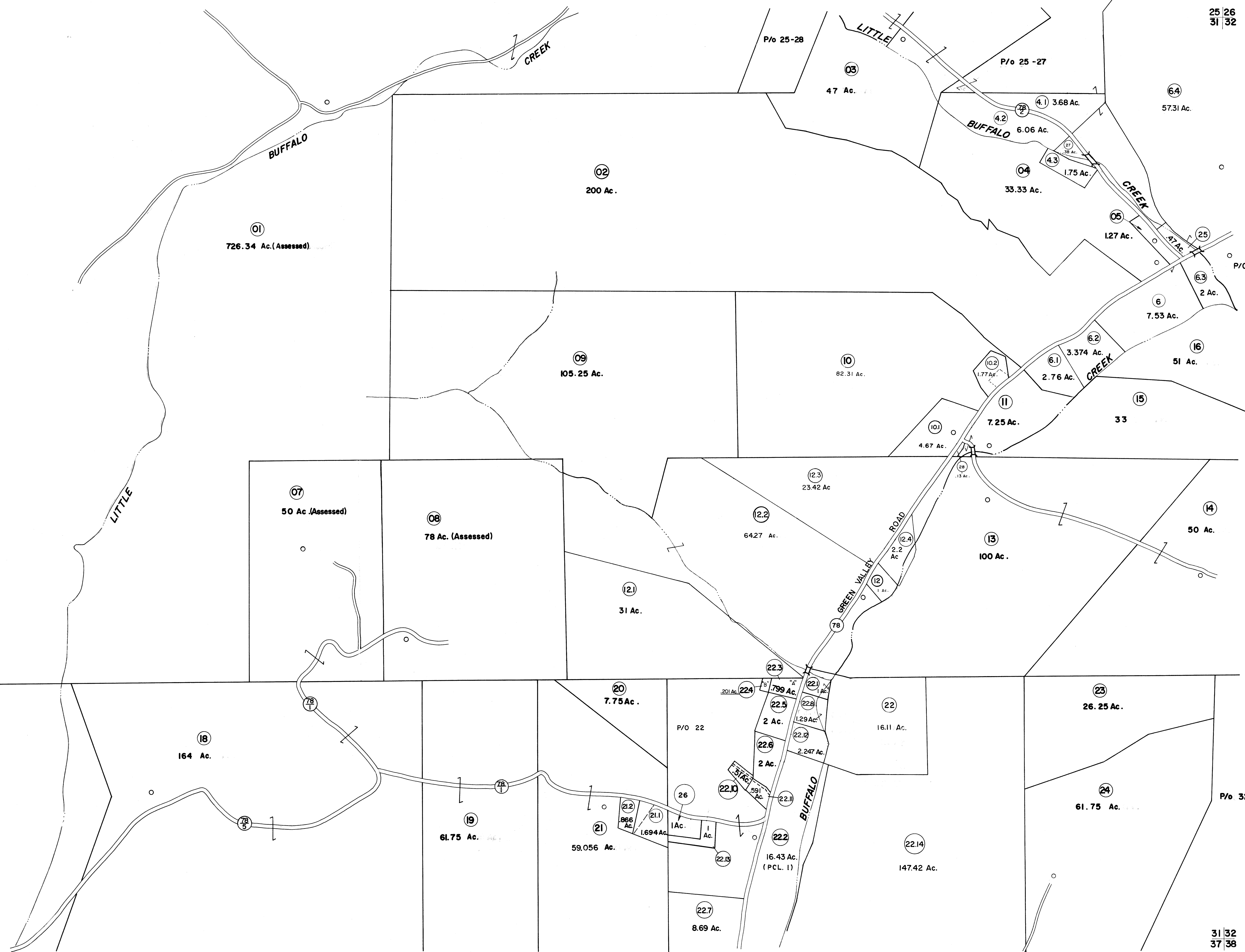
P/o 25 -01

P/O 32-04

P/o 32-34

30 31  
36 37

31 32  
37 38



FOR TAX PURPOSES ONLY

Prepared by  
**L. ROBERT KIMBALL**  
Consulting Engineer  
Ebensburg, Pennsylvania

Legend	
Property line	Original lot line
Edge of pavement or roadway	Deed lot number in parenthesis (15)
Corporation line	Parcel or index number in circle (29)
District line	Improvement
County line	Railroad

Revisions	
1 REVISED 2/11/64	9 O.G.I.S. 12-1-93 J.E.B
2 REV. TO 7-1-81	10 O.G.I.S. 3-27-95 J.E.B
3 REV. TO 7-1-84	11 O.G.I.S. 5-15-96 J.E.B
4 July 1985	12 O.G.I.S. 1-1-96 J.E.B
5 July 1986	13 SLS INC. 5/1/98 JWM
6 7-1-88	14 ESI 1/18/01 REK
7	15 ESI 10-22-01 REC
8 OGIS 11-9-91	16 SAJ

STATE OF WEST VIRGINIA  
COUNTY OF PRESTON  
Office of Assessor

RENO DISTRICT  
SHEET 31

Date, Aerial Photography: APRIL, 1960 Date, Map: MAY, 1963  
Photo No: 106; 144 Scale: 1"=400'