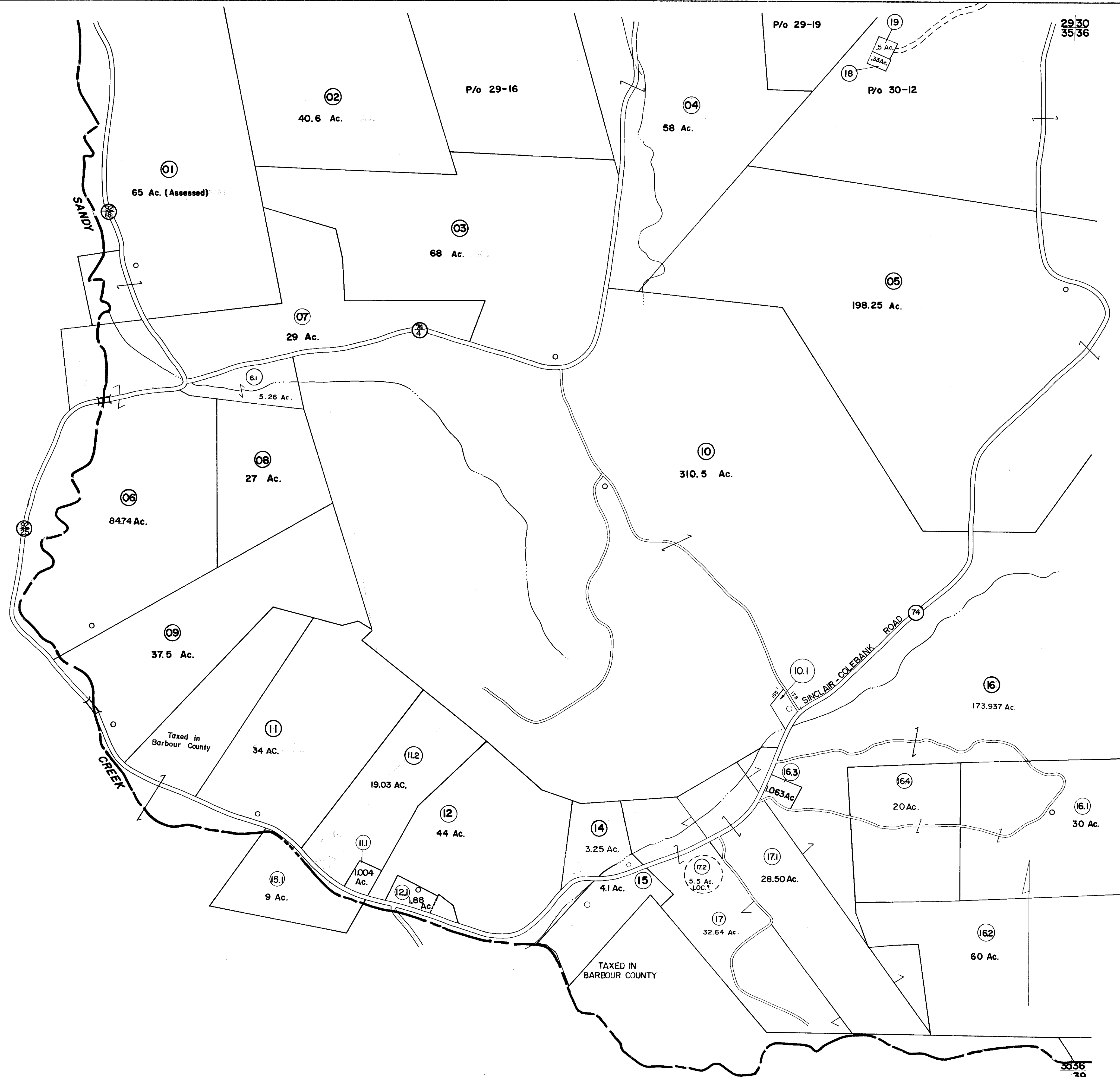


29  
35

29 30  
35 36

BARBOUR COUNTY



35 36  
39

FOR TAX PURPOSES ONLY

Prepared by  
L. ROBERT KIMBALL  
Consulting Engineer  
Ebensburg, Pennsylvania

Legend

|                             |                                       |                                     |
|-----------------------------|---------------------------------------|-------------------------------------|
| Property line               | Original lot line                     | Dead lot number in parenthesis (15) |
| Edge of pavement or roadway | Parcel or index number in circle (09) | Improvement                         |
| Corporation line            |                                       | Railroad                            |
| District line               |                                       |                                     |
| County line                 |                                       |                                     |

Revisions

|   |                   |    |                   |       |    |
|---|-------------------|----|-------------------|-------|----|
| 1 | REVISED 2/11/64   | 9  | 7-1-88            | TRL   | 17 |
| 2 | REVISED 5/25/64   | 10 | Revised to 7-1-87 |       | 18 |
| 3 | REVISED 8/3/64    | 11 | OGIS 11-10-91     | SAJ   | 19 |
| 4 | Revised to 7-1-81 | 12 | O.G.I.S 3-27-95   | J.E.B | 20 |
| 5 | Revised to 7-1-82 | 13 | O.G.I.S 1-1-96    | J.E.B | 21 |
| 6 | July 1965         | 14 | SLS INC. 5/1/98   | JWM   | 22 |
| 7 | July 1982         | 15 | SLS INC. 5/10/99  | DSW   | 23 |
| 8 | Revised to 7-1-86 | 16 | SLS INC. 3/29/00  | JWM   | 24 |

STATE OF WEST VIRGINIA  
COUNTY OF PRESTON  
Office of Assessor

RENO DISTRICT  
SHEET 35

Date, Aerial Photography: APRIL, 1960 Date, Map: MAY, 1963  
Photo No: 44 Scale: 1" = 400'