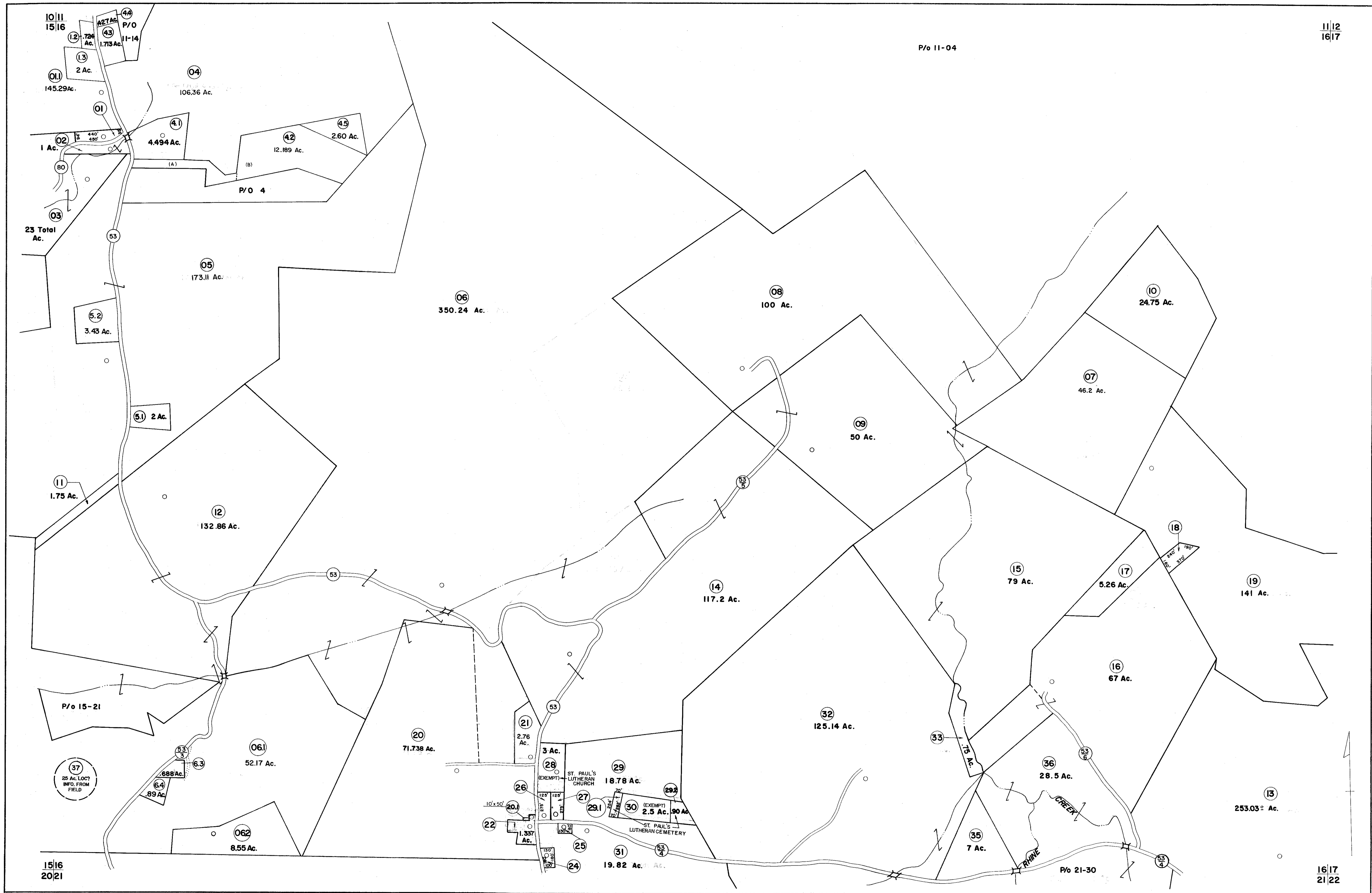


P/o 11-04



FOR TAX PURPOSES ONLY

Prepared by
L. ROBERT KIMBALL
Consulting Engineer
Ebensburg, Pennsylvania

Legend

Property line	Original lot line	Deed lot number in parenthesis (15)
Edge of pavement or roadway	Parcel or index number in circle (01)	Improvement
Corporation line	District line	Railroad
District line	County line	

Revisions

1	REVISED 2/14/64	7	OGIS	11-10-91	SAJ	17
2	REVISED 8/3/64	10	O.G.I.S	5-15-96	J.E.B	18
3	Revised to 7-1-81	11	SLS INC.	5/2/98	DSW	19
4	Revised to 7-1-83	12	SLS INC.	3/30/00	JWM	20
5	Revised to 7-1-88	13				21
6	July 1995	14				22
7	July 1995	15				23
8	7-1-88	16	TRL			24

STATE OF WEST VIRGINIA
COUNTY OF PRESTON
Office of Assessor

UNION DISTRICT
SHEET 16

Date, Aerial Photography: APRIL, 1960 Date, Map: DEC., 1962
Photo No: 385,531 Scale: 1" = 400'