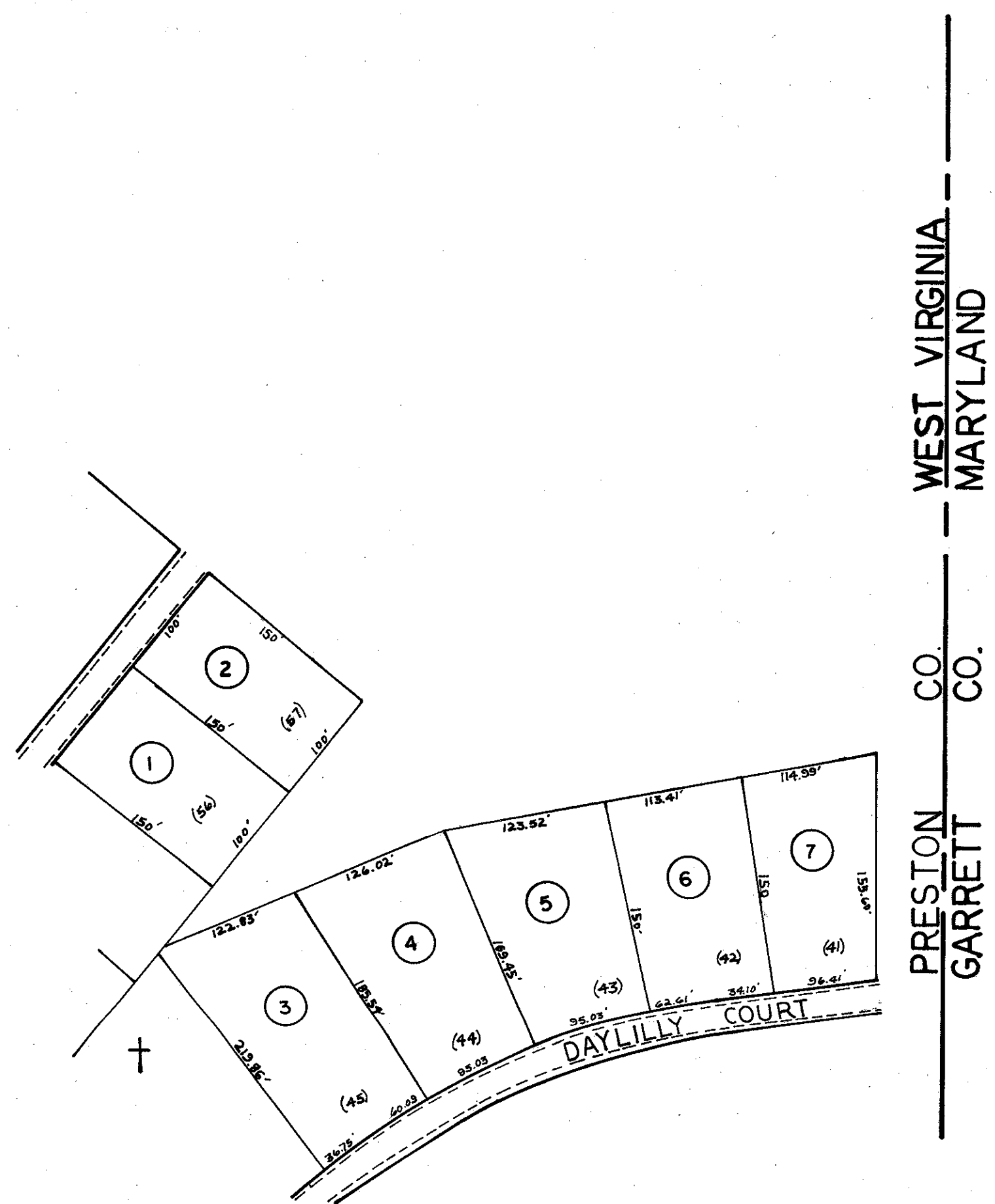


+



For Tax Purposes Only  
 Prepared by  
 ASSESSMENT EQUALIZATION DIV.  
 STATE TAX COMMISSIONER  
 CHARLESTON, W.VA.

LEGEND	
Property line	Original lot line
Edge of pavement or roadway	Deed lot number (15)
Corporation line	Parcel or index number (15)
District line	Improvement
County line	Railroad

REVISIONS	
1	7-5-75 DWV
2	Revised to 7-1-81
3	
4	
5	
6	
7	
8	

RESTRICTION

All tax maps created under the provisions of reappraisal legislation are the property of the State of West Virginia and the reproduction, copying, distribution or sale of such tax maps or any copies thereof without the written permission of the State Tax Commissioner is prohibited by law.

KEY MAP	
26	26 27
26F	26H 27
26E	26J 26K

STATE OF WEST VIRGINIA  
 COUNTY OF PRESTON  
 Office of Assessor

PORTLAND DIST.  
 SHEET NO: 26-H  
 Date, Aerial Photography: Photo No:  
 Date, Map: 2-1-73  
 Scale: 1" = 100'