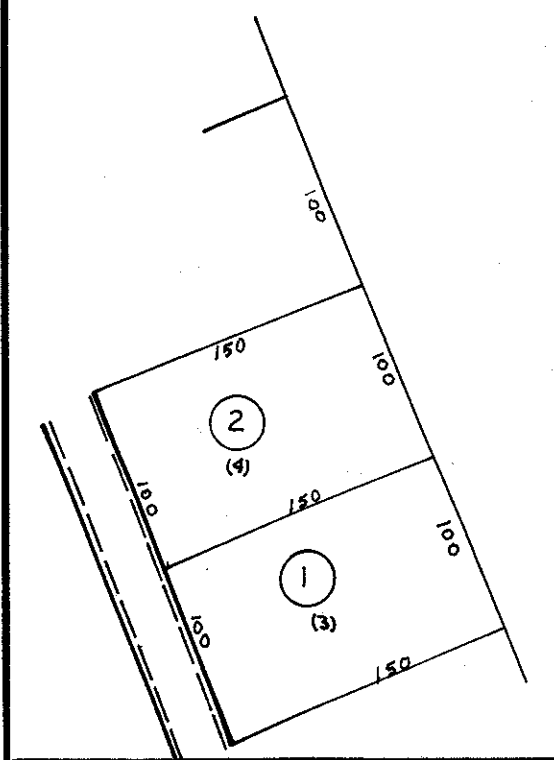
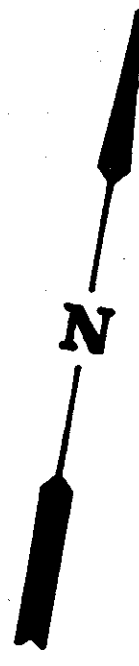


WEST VIRGINIA
MARYLAND



For Tax Purposes Only
Prepared by
ASSESSMENT EQUALIZATION DIV.
STATE TAX COMMISSIONER
CHARLESTON, W.VA.

LEGEND	
Property line	—
Edge of pavement or roadway	- - - -
Corporation line	- · - · -
District line	- - - -
County line	- - - -

Original lot line	- - - -
Deed lot number	(15)
Parcel or index number	⊙
Improvement	○
Railroad	—+—

REVISIONS	
1	JULY 6 1973 OAE
2	MAY 74 PAM
3	Revised to 7-1-85
4	REV. TO 7-1-85 NCS
5	
6	
7	
8	

RESTRICTION

All tax maps created under the provisions of reappraisal legislation are the property of the State of West Virginia and the reproduction, copying, distribution or sale of such tax maps or any copies thereof without the written permission of the State Tax Commissioner is prohibited by law.

KEY MAP	
26	27
26	27
26	27

STATE OF WEST VIRGINIA
COUNTY OF PRESTON
Office of Assessor

PORTLAND DISTRICT
26-J

Date, Aerial Photography:
Photo No:

Date, Map: 7/73
Scale: 1" = 100'