

6 7
11 12

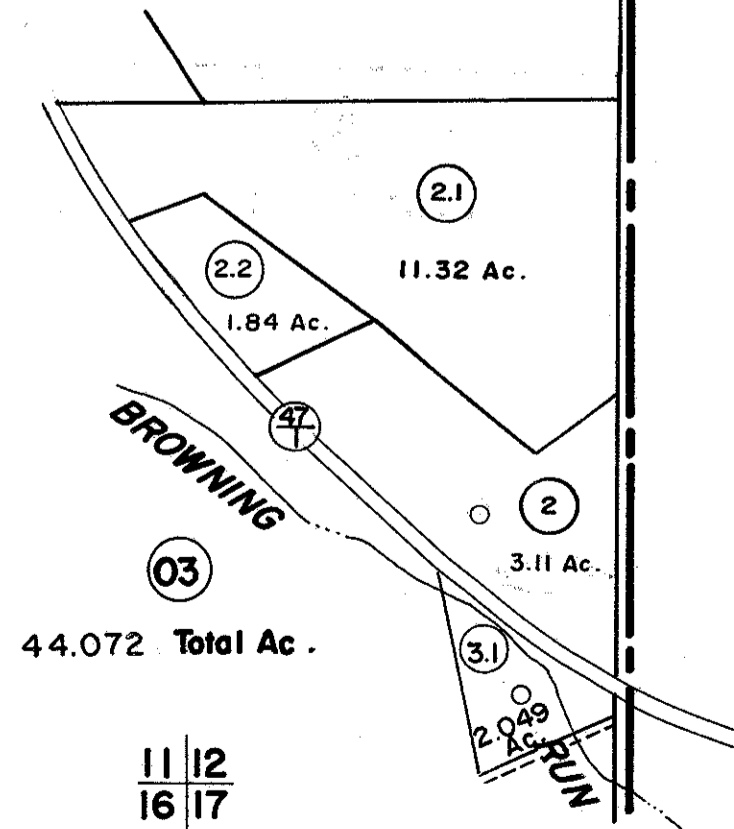
P/O 11-09

P/O 7-5.1

01

248.53 Total Ac.(Cal)

GARRETT COUNTY
MARYLAND



11 12
16 17

FOR TAX PURPOSES ONLY

Prepared by
L. ROBERT KIMBALL
Consulting Engineer
Ebensburg, Pennsylvania

Legend

Property line	Original lot line
Edge of pavement or roadway	Deed lot number in parenthesis (15)
Corporation line	Parcel or index number in circle (16)
District line	Improvement
County line	Railroad

Revisions

1	Revised to 7-1-81	9		17
2	REV. TO 7-1-85	NCS		18
3	Revised to 7-1-88			19
4	OGIS 5-1-93	JEB		20
5	O.G.I.S 4-4-95	J.E.B		21
6	O.G.I.S 5-15-96	J.E.B		22
7				23
8				24

STATE OF WEST VIRGINIA
COUNTY OF PRESTON
Office of Assessor

PORTLAND DISTRICT
SHEET 12

Date, Aerial Photography: APRIL, 1960 Date, Map: JULY, 1963
Photo No: 495 Scale: 1"=400'