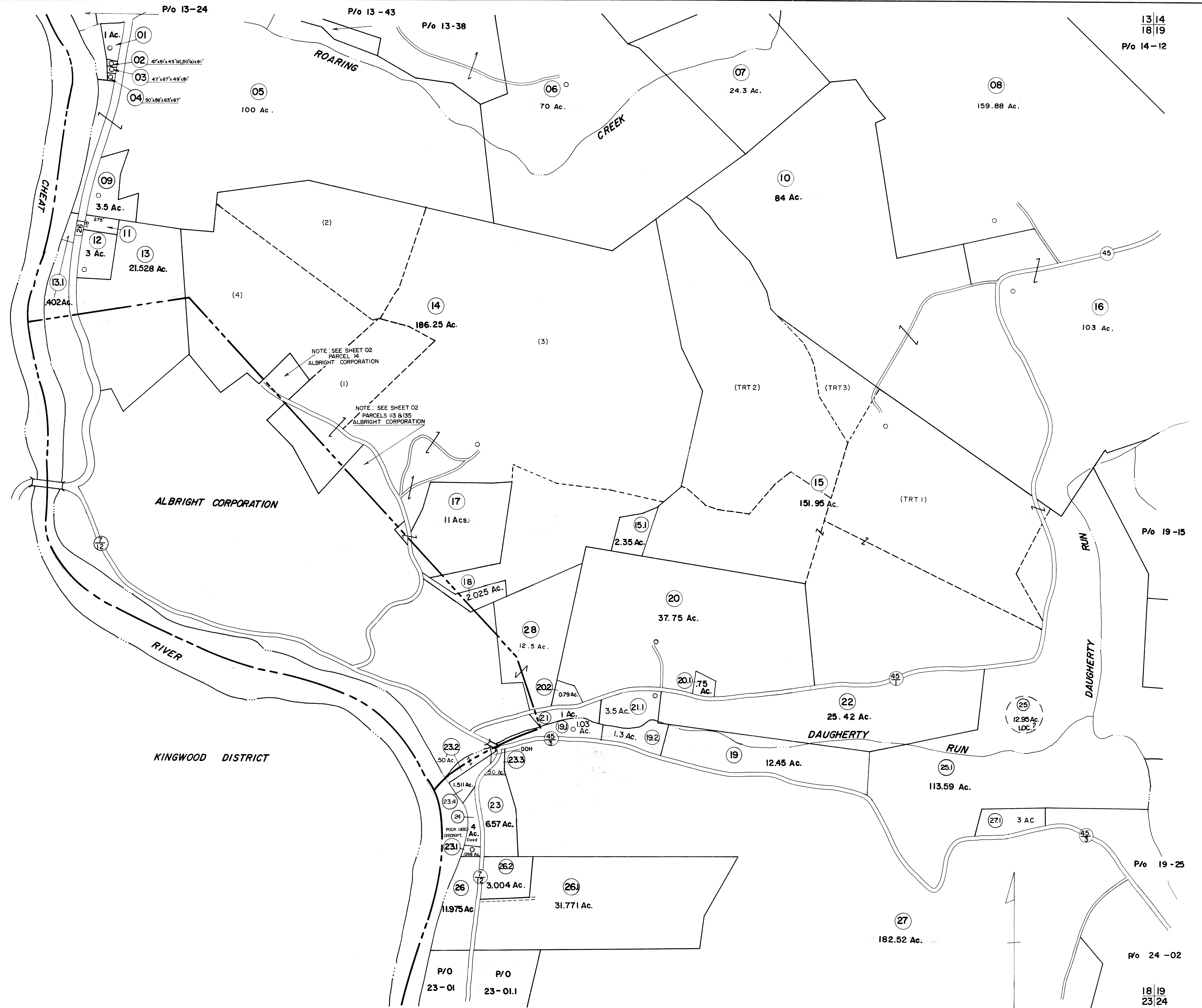


13
18

13|14
18|19
P/o 14-12

KINGWOOD DISTRICT



18
23

18|19
23|24

FOR TAX PURPOSES ONLY

Prepared by
L. ROBERT KIMBALL
Consulting Engineer
Ebensburg, Pennsylvania

Legend	
Property line	Original lot line
Edge of pavement or roadway	Deed lot number in parenthesis (15)
Corporation line	Parcel or index number in circle (22)
District line	Improvement
County line	Railroad

Revisions	
1 REVISED 2/13/64	9 Revised to 7-1-86
2 Revised to 7-1-81	10 Revised to 7-1-87
3 7-1-83 T.L.B.	11 OGIS 9/21/91
4 Revised to 7-1-84	12 OGIS 5-1-93
5 REV. TO 7-1-85	13 O.G.I.S 5-15-96
6 7-1-86	14 O.G.I.S 1-1-97
7 July, 1986	15 ESI 1/9/03
8 Revised to 7-1-87	

STATE OF WEST VIRGINIA
COUNTY OF PRESTON
Office of Assessor

PORTLAND DISTRICT
SHEET 18

Date, Aerial Photography: APRIL, 1960 Date, Map: JULY, 1963
Photo No: 281; 511 Scale: 1"=400'