

47|48  
53|54

P/O 48-01

48|49  
54|55

4.2  
102.163 Ac.  
POOR DEED DESCRIPTION  
LOC. ?

04  
996.247 Total Ac.

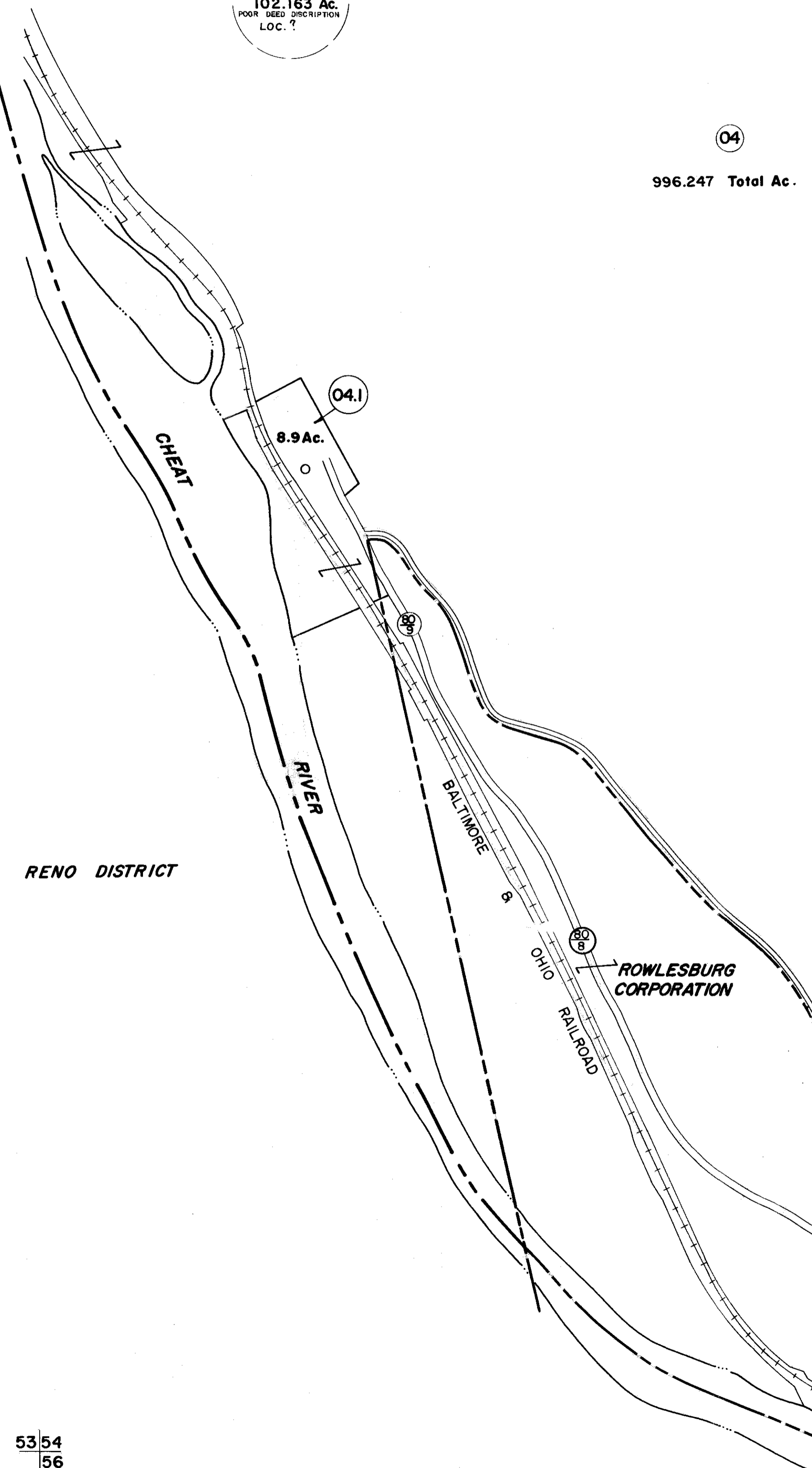
02  
97.74 Ac.

03  
100 Total Ac.

01  
88.25 Ac.  
10 Ac.

07.1  
150 Total Ac.

07  
419 Ac.



09 12.73 Ac.  
10 133.12 Ac.  
08 4.1 Ac.  
09.1 5.27 Ac.  
12 1 Ac.  
13 2.5 Ac.

- 26 100'x180'
- 27 80'x100'
- 28 100'x200'
- 29 80'x100' 55.2'x92'x19'
- 30 80'x192'x44.8'x100'
- 31 80'x100'
- 32 80'x100'
- 33 80'x100'
- 34 40'x100'x50'x100'x40'
- 35 160'x40'x60'x100'x100'
- 36 80'x100'
- 37 80'x100'

11 16.87 Ac.  
20 20 Total Ac.  
1.75 Ac. (Assessed)  
1.29 Ac. (Cal.)  
1.25 Ac. Cal.  
1.5 Ac.  
1.66 Ac. (80'x100')

15 13.25 Ac. (Assessed)  
19.58 Ac. (Cal.)  
16 19.5 Ac.

ROWLESBURG CORPORATION

53|54  
56

54|55  
56

P/O 56-1

FOR TAX PURPOSES ONLY

Prepared by  
**L. ROBERT KIMBALL**  
Consulting Engineer  
Ebensburg, Pennsylvania

Legend	
Property line	Original lot line
Edge of pavement or roadway	Deed lot number in parenthesis (15)
Corporation line	Parcel or index number in circle (29)
District line	Improvement
County line	Railroad

Revisions			
1	REVISED 2/13/64	9	O.G.I.S 5-15-96 J.E.B
2	REVISED 8/3/64	10	SLS INC. 5/4/98 DSW
3	Revised to 7-1-81	11	SLS INC. 5/17/99 DSW
4	July 1988	12	SLS INC. 4/4/00 JWM
5	REV. TO 7-1-85	13	
6	Revised to 7-1-89	14	
7	OGIS 9/22/91	15	
8	O.G.I.S 4-4-95	16	

STATE OF WEST VIRGINIA  
COUNTY OF PRESTON  
Office of Assessor

PORTLAND DISTRICT  
SHEET 54

Date, Aerial Photography: APRIL, 1960 Date, Map: JULY, 1963  
Photo No: 233, 271 Scale: 1"=400'