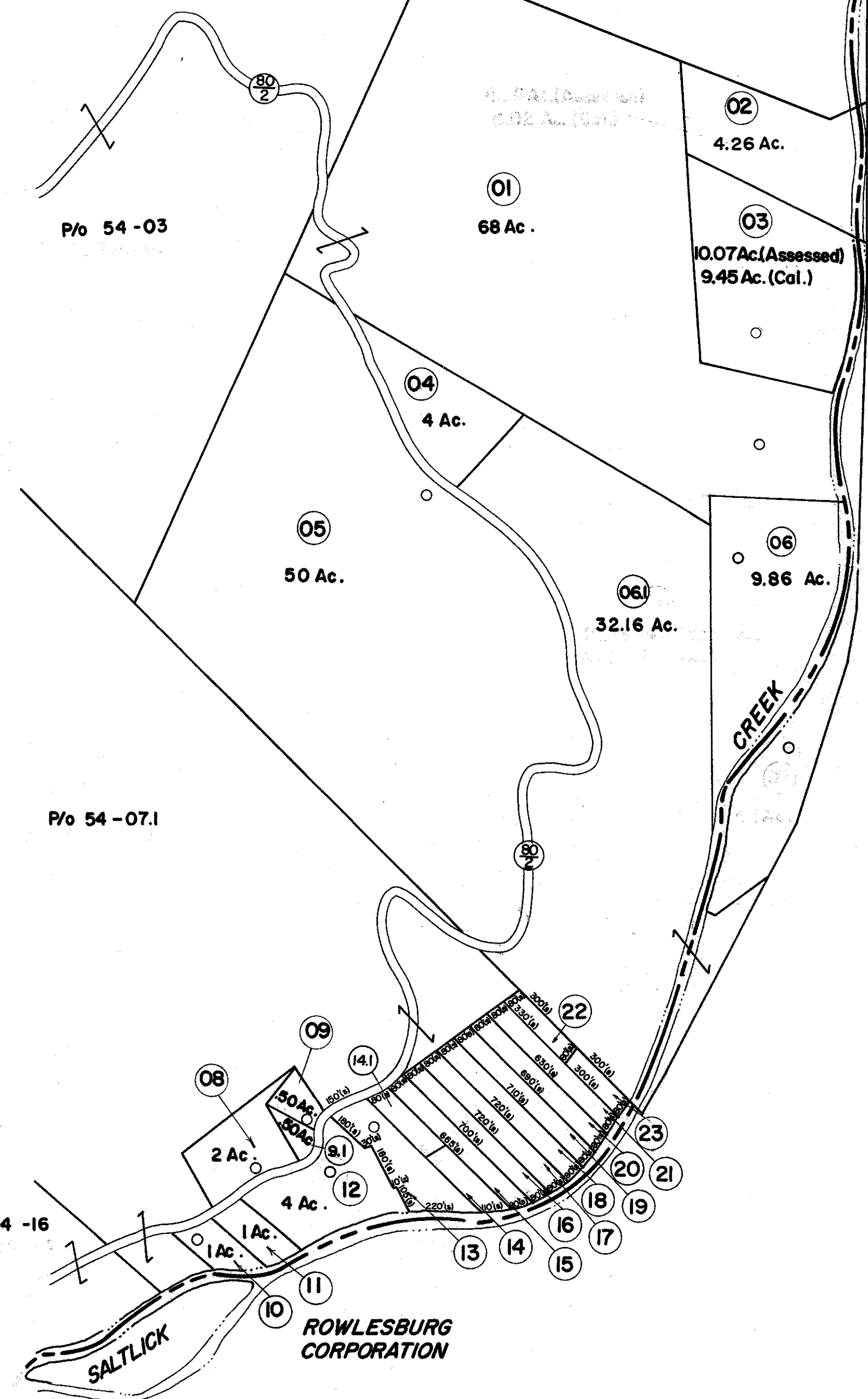


P/o 49-07

P/o 54-03

P/o 54-07.1

P/o 54-16



UNION DISTRICT

ROWLESBURG CORPORATION

FOR TAX PURPOSES ONLY

Prepared by
L. ROBERT KIMBALL
Consulting Engineer
Ebensburg, Pennsylvania

Legend

Property line	Original lot line
Edge of pavement or roadway	Dead lot number in parenthesis (15)
Corporation line	Parcel or index number in circle (9)
District line	Improvement
County line	Railroad

Revisions

1	REVISED 8/3/64	9		17
2	REV. TO 7-1-85	10		18
3	REV. TO 7-1-85	NCS		19
4	OGIS 9/22/91	DSH		20
5	OGIS 5-1-93	JEB		21
6	O.G.I.S 4-4-95	J.E.B		22
7				23
8				24

STATE OF WEST VIRGINIA
COUNTY OF PRESTON
Office of Assessor

PORTLAND DISTRICT
SHEET 55

Date, Aerial Photography: APRIL, 1960 Date, Map: JULY, 1963
Photo No: 271 Scale: 1"=400'

