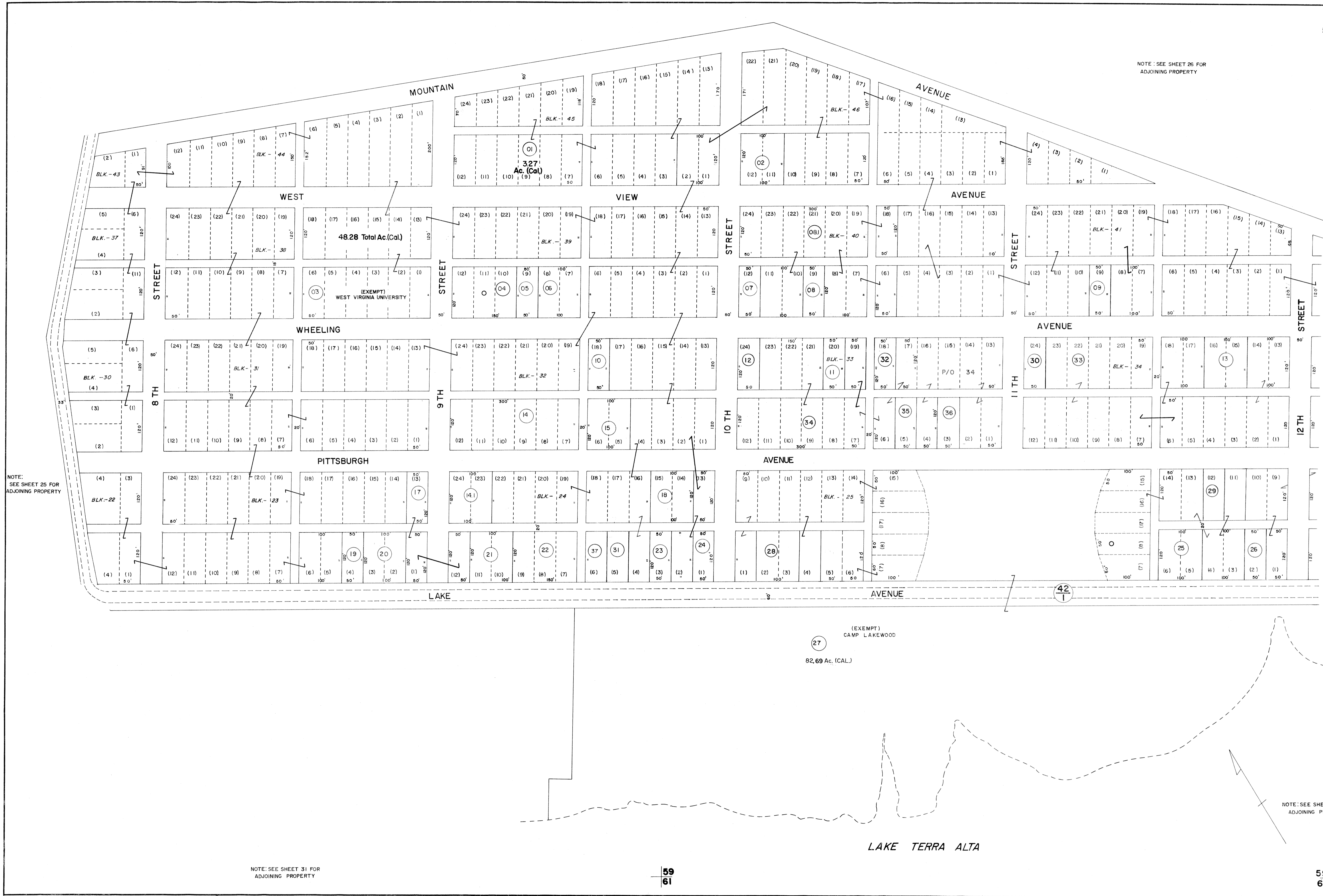


NOTE: SEE SHEET 26 FOR ADJOINING PROPERTY



NOTE: SEE SHEET 25 FOR ADJOINING PROPERTY

NOTE: SEE SHEET 31 FOR ADJOINING PROPERTY

NOTE: SEE SHEET 32 FOR ADJOINING PROPERTIES

FOR TAX PURPOSES ONLY

Prepared by
L. ROBERT KIMBALL
Consulting Engineer
Ebensburg, Pennsylvania

Legend

Property line	—	Original lot line	-----
Edge of pavement or roadway	—	Dead lot number in parenthesis	(15)
Corporation line	-----	Parcel or index number in circle	(2)
District line	-----	Improvement	○
County line	-----	Railroad	—+—

Revisions

1	REVISED 8/3/64	9	
2	Revised to 7-1-81	10	
3	To JULY 1, 1983 C.P.	11	
4	Revised to 7-1-88	12	
5	OGIS 9/22/91	DSH	13
6	O.G.I.S 5-15-96	J.E.B	14
7	SLS INC. 5/4/98	DSW	15
8	ESI 1/23/01	REK	16

STATE OF WEST VIRGINIA
COUNTY OF PRESTON
Office of Assessor

LAKE TERRA ALTA
PORTLAND DISTRICT
SHEET 59

Date, Aerial Photography: APRIL, 1960
Photo No: 447, 449
Date, Map: JULY, 1963
Scale: 1"=100'

156 IMPERIAL, A-58, SMITH CO., P.O.H., PA. #1246-1262