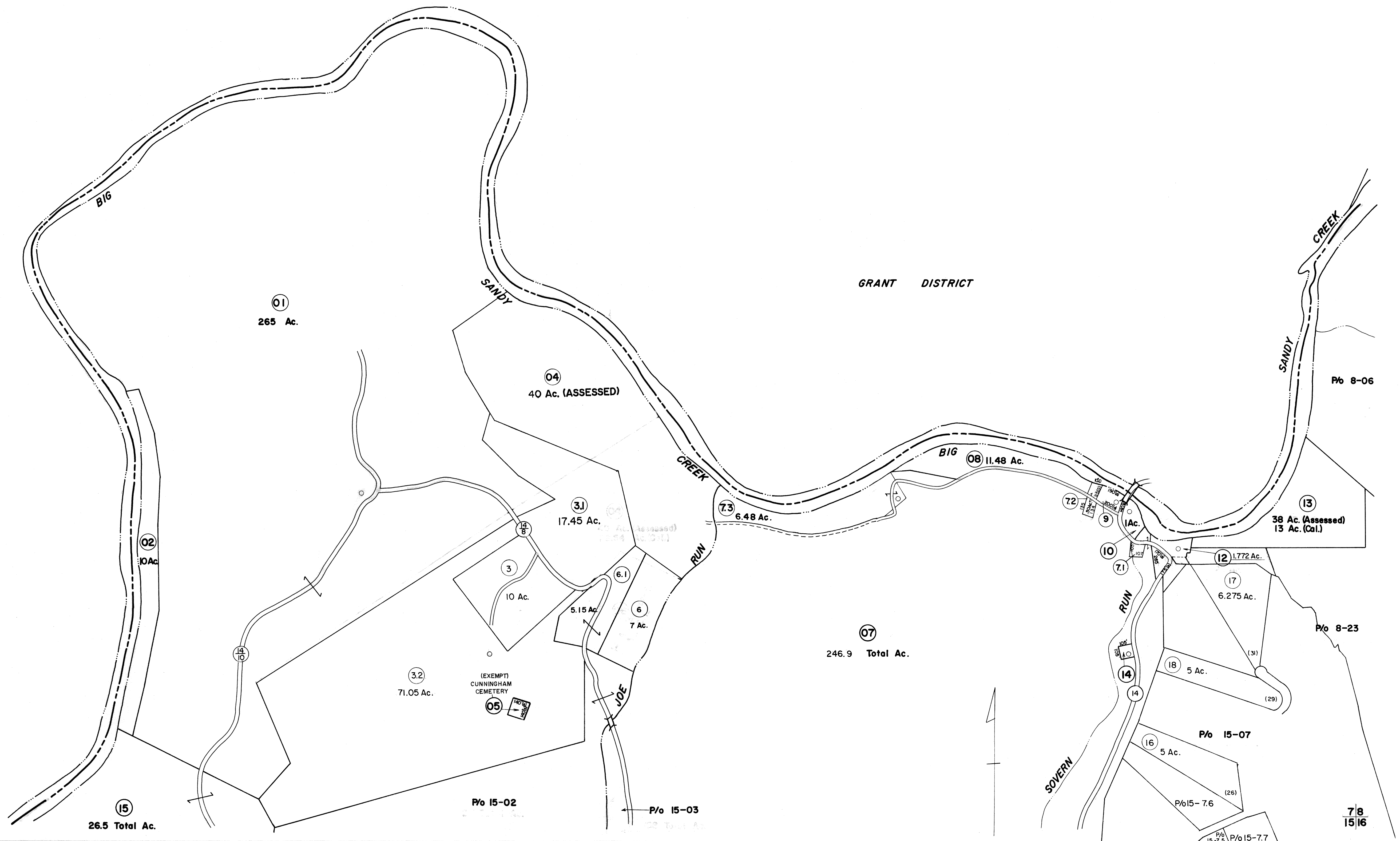


GRANT DISTRICT

GRANT DISTRICT



FOR TAX PURPOSES ONLY

Prepared by  
L. ROBERT KIMBALL  
Consulting Engineer  
Ebensburg, Pennsylvania

**Legend**

Property line	—	Original lot line	—
Edge of pavement or roadway	—	Deed lot number in parenthesis	(15)
Corporation line	—	Parcel or index number in circle	(99)
District line	—	Improvement	o
County line	—	Railroad	—

**Revisions**

1	Revised to 7-81	9		17
2	Revised to 7-1-83	10		18
3	July 1985	11		19
4	SLS INC. 5/4/98 DSW	12		20
5	ESI 10/15/01 DH	13		21
6	ESI 1/10/03 REK	14		22
7		15		23
8		16		24

STATE OF WEST VIRGINIA  
COUNTY OF PRESTON  
Office of Assessor

PLEASANT DISTRICT  
SHEET 07

Date, Aerial Photography: APRIL, 1960 Date, Map: APRIL, 1963  
Photo No: 211 Scale: 1"=400'