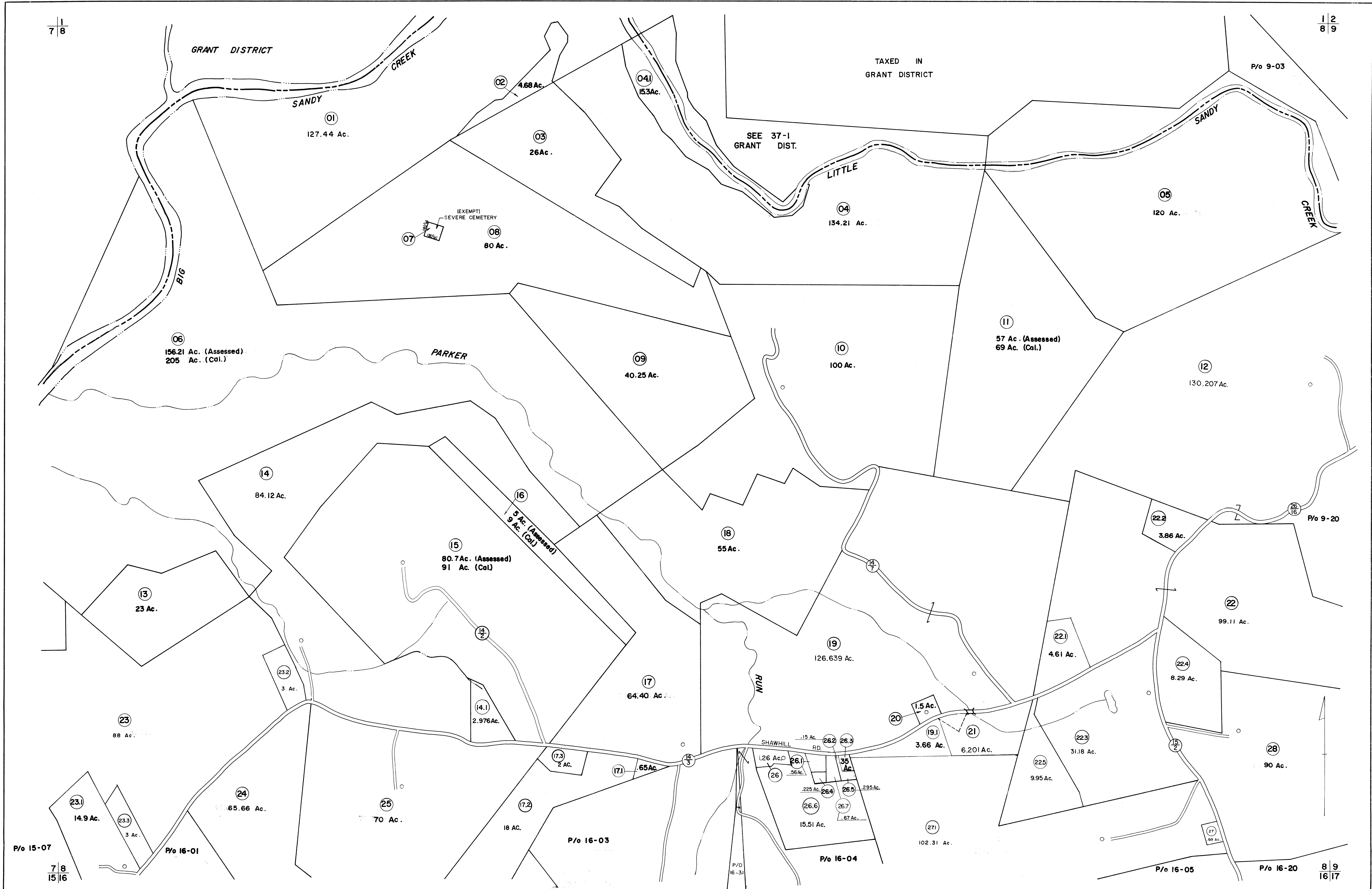


7 | 8

1 | 2
8 | 9



FOR TAX PURPOSES ONLY

Prepared by
L. ROBERT KIMBALL
 Consulting Engineer
 Ebensburg, Pennsylvania

Legend	
Property line	Original lot line
Edge of pavement or roadway	Deed lot number in parenthesis (15)
Corporation line	Parcel or index number in circle (21)
District line	Improvement
County line	Railroad

Revisions			
1	REVISED 8/3/64	9	OGIS 5-1-93 JEB
2	Revised to 7-1-83	10	O.G.I.S. 5-15-96 J.E.B.
3	Revised to 7-1-83	11	O.G.I.S. 1-1-97 J.E.B.
4	Revised to 7-1-84	12	SLS INC. 5/4/98 JWM
5	July 1985	13	SLS INC. 4/4/00 JWM
6	to 7-1-86 C.P.	14	ESI 1/23/01 REK
7	Revised to 7-1-89	15	ESI 1/10/03 REK
8	OGIS 11-5-91 JEB	16	

STATE OF WEST VIRGINIA
 COUNTY OF PRESTON
 Office of Assessor

PLEASANT DISTRICT
 SHEET 08

Date, Aerial Photography: APRIL, 1960 Date, Map: APRIL, 1963
 Photo No: 253 Scale: 1"=400'

7 | 8
15 | 16

8 | 9
16 | 17