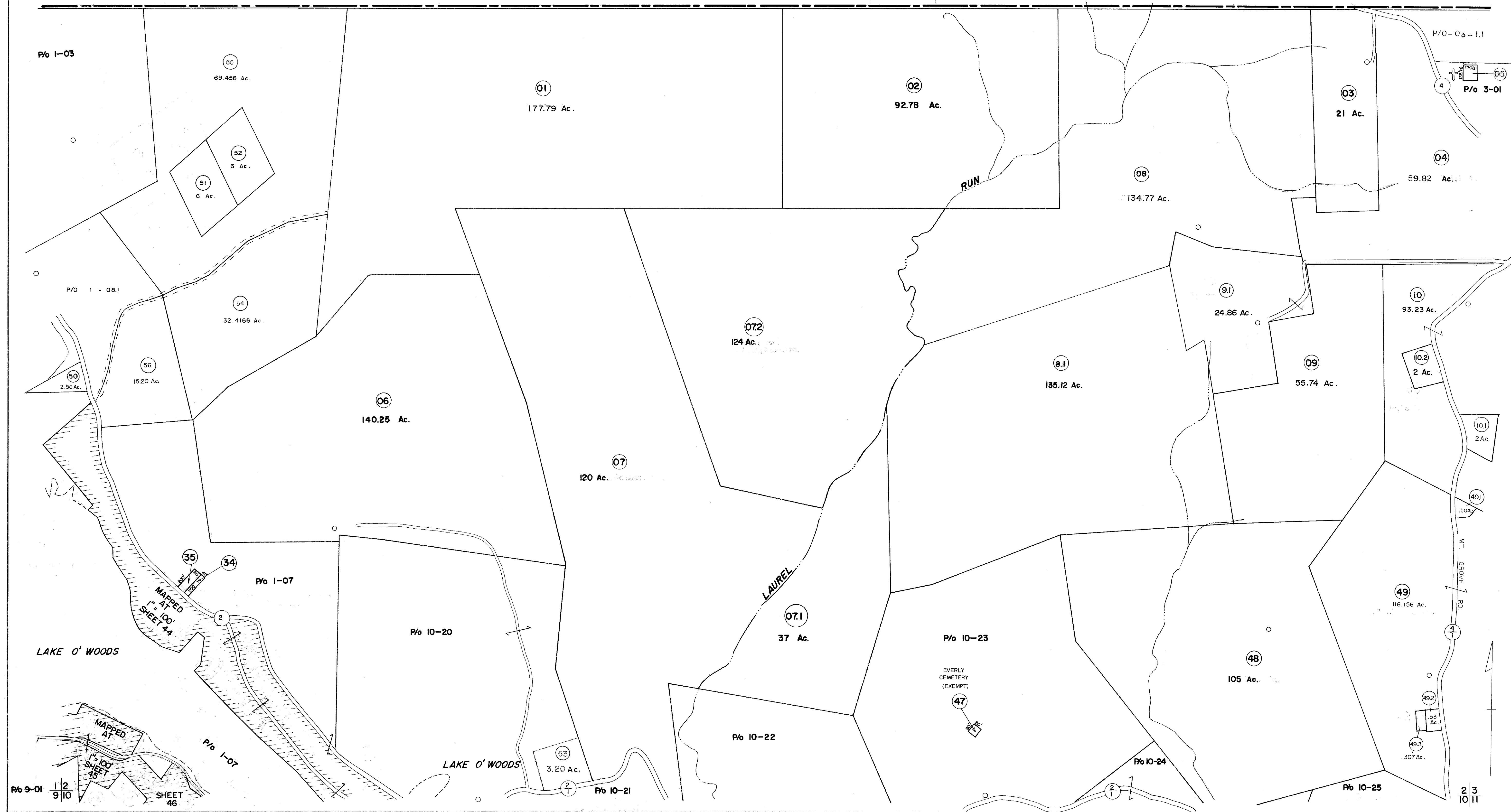


PENNSYLVANIA



FOR TAX PURPOSES ONLY

Prepared by
L. ROBERT KIMBALL
 Consulting Engineer
 Ebensburg, Pennsylvania

Legend

Property line	Original lot line	Deed lot number in parenthesis (15)
Edge of pavement or roadway	Parcel or index number in circle (22)	Improvement
Corporation line	County line	Railroad

Revisions

1	REVISED 1/8/64	9	OGIS 11-15-91	NK	17
2	REVISED 8/3/64	10	OGIS 5-1-93	JEB	18
3	REVISED TO 7/1/81 C.P.	11	O.G.I.S 12-1-93	J.E.B	19
4	To JULY 1, 1983 C.P.	12	O.G.I.S 5-15-96	J.E.B	20
5	July 1988	13	O.G.I.S 1-1-97	J.E.B	21
6	To 7-1-85 C.P.	14	SLS INC. 5/10/99	DSW	22
7	Revised to 7-1-88	15			23
8	Revised to 7-1-89	16			24

STATE OF WEST VIRGINIA
 COUNTY OF PRESTON
 Office of Assessor

GRANT DISTRICT
 SHEET 02

Date, Aerial Photography: APRIL, 1960 Date, Map: MAR., 1963
 Photo No: 177; 222; 224 Scale: 1"=400'