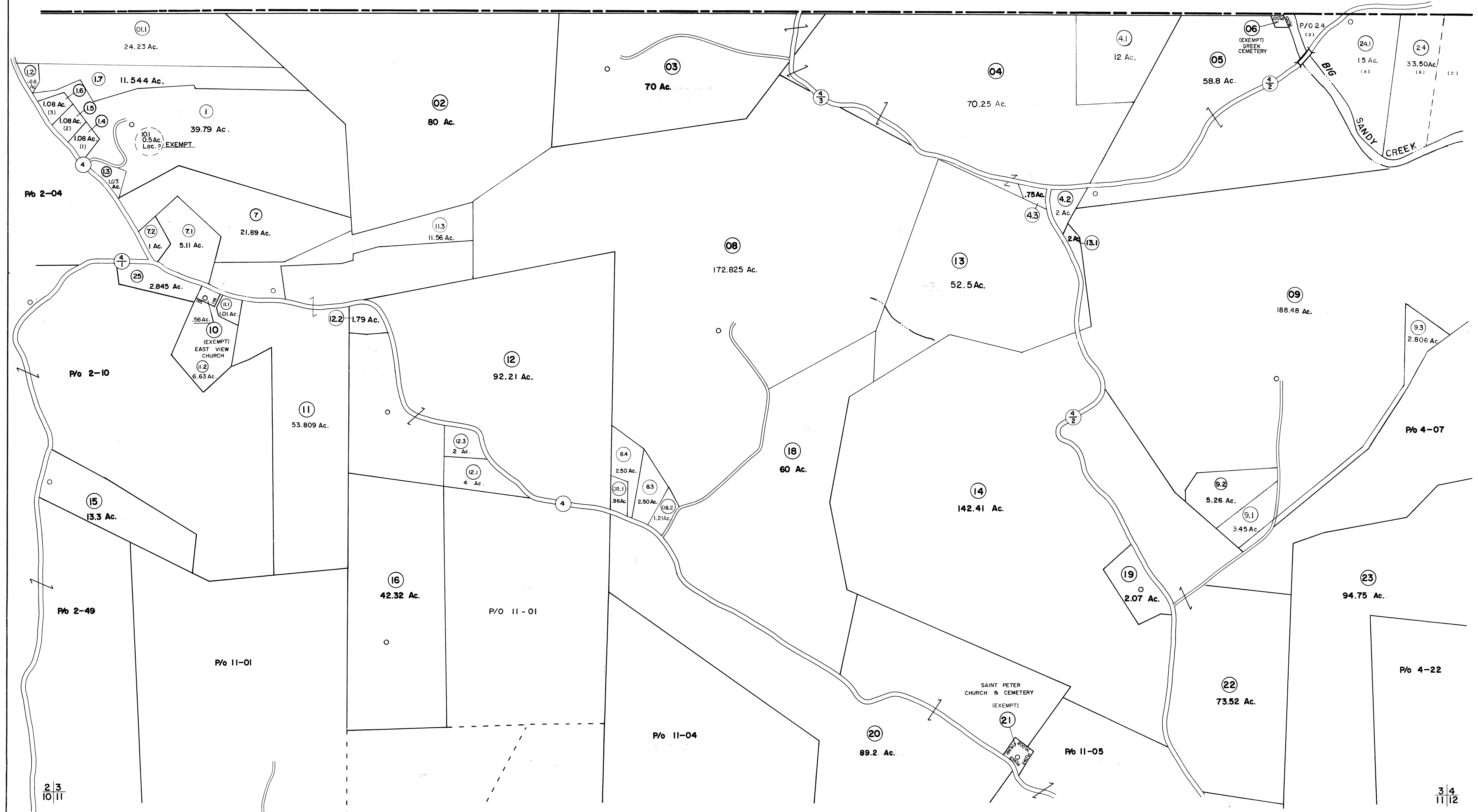


FAYETTE COUNTY PENNSYLVANIA



FOR TAX PURPOSES ONLY

Prepared by
L. ROBERT KIMBALL
Consulting Engineer
Ebensburg, Pennsylvania

Legend

Property line	Original lot line
Edge of pavement or roadway	Deed lot number in parenthesis (15)
Corporation line	Parcel or index number in circle (9)
District line	Improvement
County line	Railroad

Revisions

1	REVISED TO 7/1/81 C.P.	9	O.G.I.S	5-15-96	J.E.B	17
2	To JULY 1, 1983 C.P.	10	O.G.I.S	1-1-97	J.E.B	18
3	July 1984	11	ESI	1-18-01	REK	19
4	July 1986	12	ESI	10-22-01	REC	20
5	Revised to 7-1-88	13	ESI	1/7/03	REK	21
6	OGIS 11/15/91	14				22
7	OGIS 5-1-93	15				23
8	O.G.I.S 12-1-93	16				24

STATE OF WEST VIRGINIA
COUNTY OF PRESTON
Office of Assessor

GRANT DISTRICT
SHEET 03

Date, Aerial Photography: APRIL, 1960 Date, Map: MAR., 1963
Photo No: 259 Scale: 1"=400'