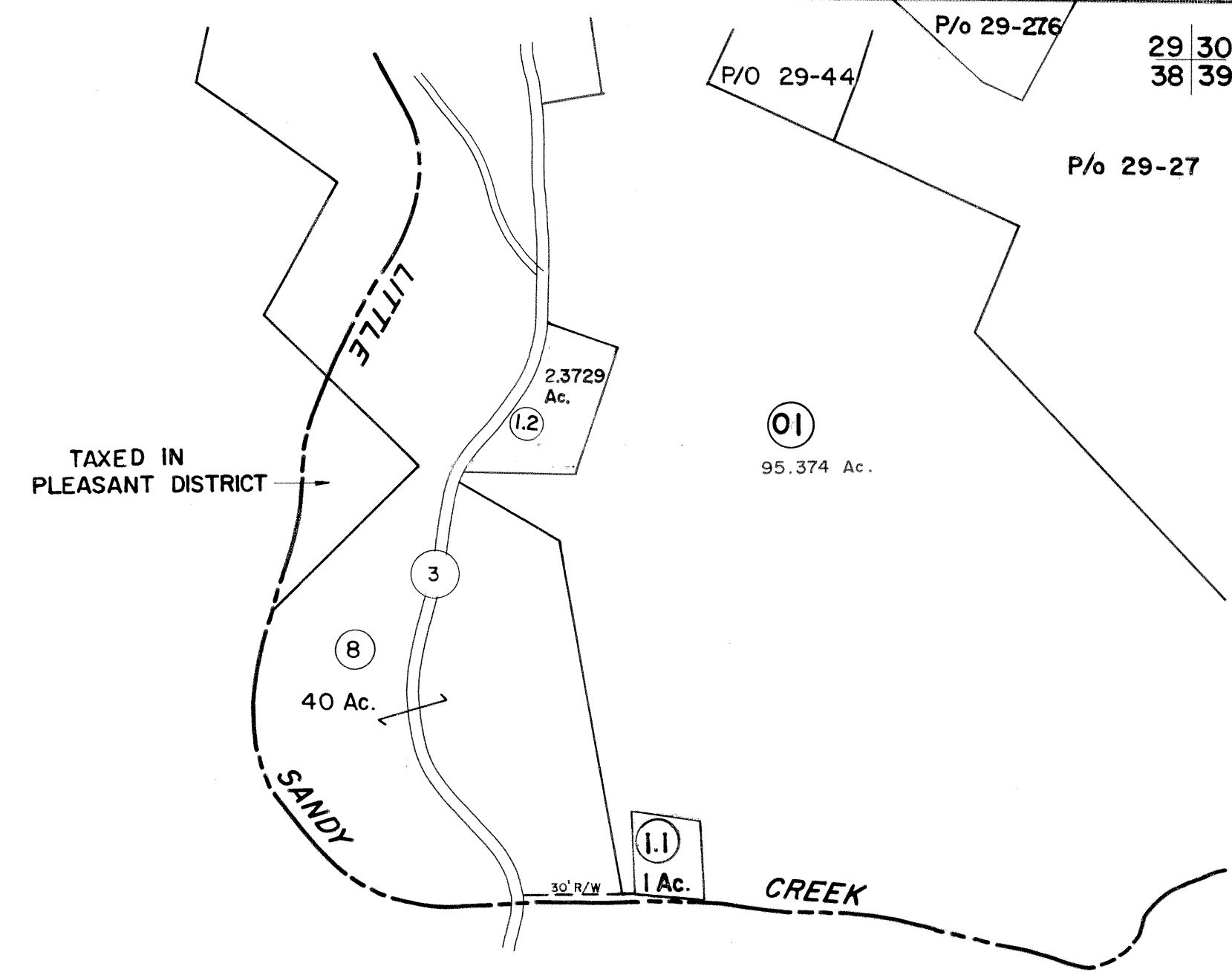


PLEASANT DISTRICT



TAXED IN PLEASANT DISTRICT

FOR TAX PURPOSES ONLY

Prepared by  
**L. ROBERT KIMBALL**  
Consulting Engineer  
Ebensburg, Pennsylvania

Legend	
Property line	Original lot line
Edge of pavement or roadway	Deed lot number in parenthesis (15)
Corporation line	Parcel or index number in circle (29)
District line	Improvement
County line	Railroad

Revisions			
1	REVISED 5/25/64	9	O.G.I.S 3-27-95 J.E.B
2	REV. 7-81 DR. 7-82 T.Groves	10	O.G.I.S 5-1-96 J.E.B
3	Revised to 7-1-83	11	O.G.I.S 1-1-97 J.E.B
4	To 7-1-85 C.P.	12	SLS INC. 5/2/98 DSW
5	July 1986 TRL	13	SLS INC. 3/30/00 JWM
6	Revised to 7-1-89 R.E.B	14	ESI 10/15/01 DH
7	OGIS 11/19/91 NK	15	
8	OGIS 5-1-93 JEB	16	

STATE OF WEST VIRGINIA  
COUNTY OF PRESTON  
Office of Assessor

GRANT DISTRICT  
SHEET 38

Date, Aerial Photography: APRIL, 1960 Date, Map: MAR., 1963  
Photo No: 291 Scale: 1"=400'