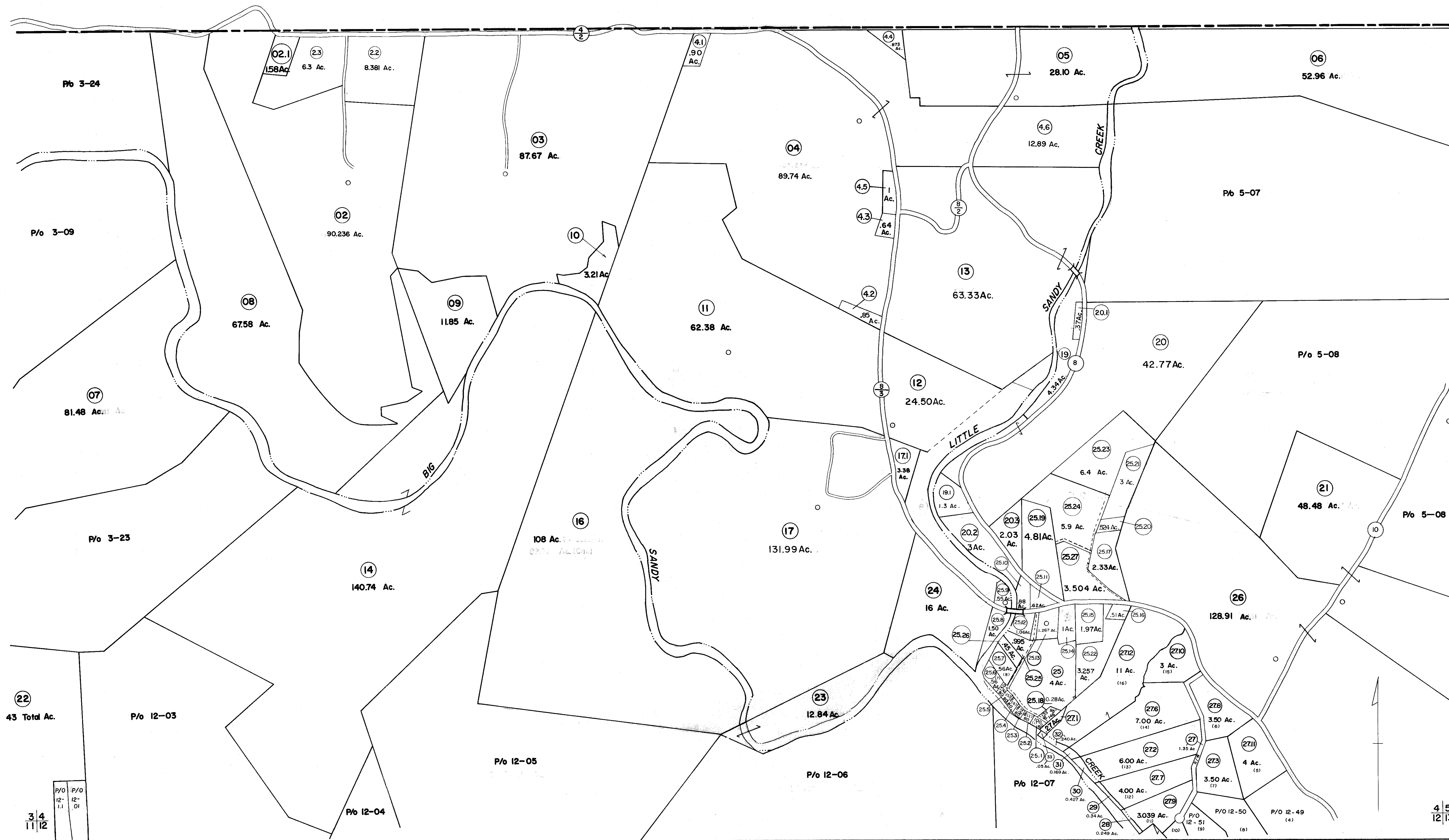


FAYETTE COUNTY
PENNSYLVANIA



FOR TAX PURPOSES ONLY

Prepared by
L. ROBERT KIMBALL
Consulting Engineer
Ebensburg, Pennsylvania

Legend

Property line	-----
Edge of pavement or roadway	-----
Corporation line	-----
District line	-----
County line	-----
Original lot line	-----
Deed lot number in parenthesis (15)	(15)
Parcel or index number in circle (20)	(20)
Improvement	o
Railroad	+++++

Revisions

1	REVISED 1/8/64	9	OGIS 5-1-93	JEB	17
2	REVISED TO 7/1/81 C.P.	10	O.G.I.S 12-1-93	J.E.B	18
3	TO JULY 1 1983 C.P.	11	O.G.I.S 3-27-95	J.E.B	19
4	July 1986	12	O.G.I.S 5-15-96	J.E.B	20
5	Revised to 7-1-88	13	O.G.I.S 1-1-97	J.E.B	21
6	OGIS 11/15/91	14	SLS INC. 5/10/99	DSW	22
7		15	SLS INC. 3/29/00	JWM	23
8		16			24

STATE OF WEST VIRGINIA
COUNTY OF PRESTON
Office of Assessor

GRANT DISTRICT
SHEET 04

Date, Aerial Photography: APRIL, 1960 Date, Map: MAR, 1963
Photo No: 295, 297, 334 Scale: 1" = 400'