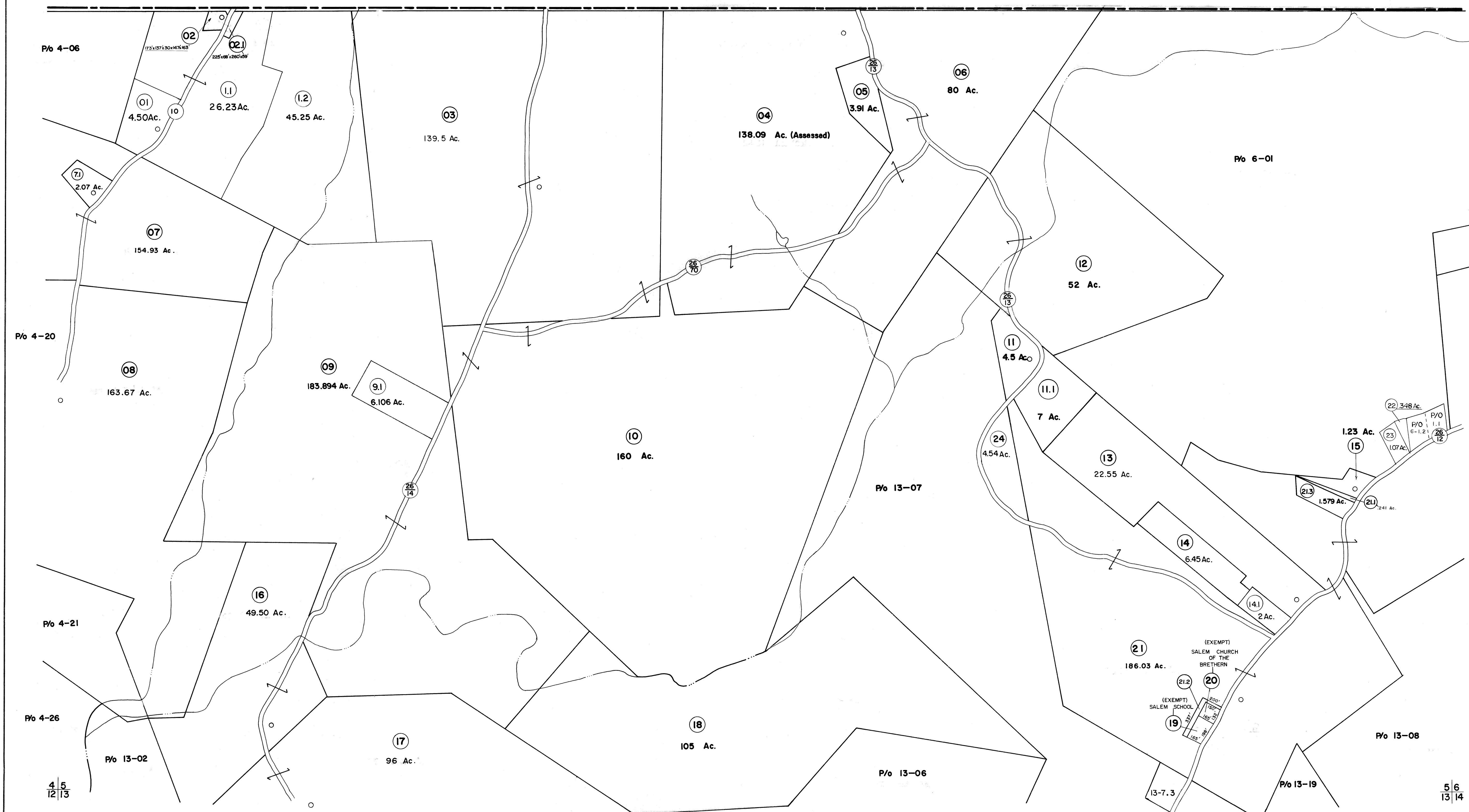


FAYETTE COUNTY PENNSYLVANIA



FOR TAX PURPOSES ONLY

Prepared by
L. ROBERT KIMBALL
Consulting Engineer
Ebensburg, Pennsylvania

Legend

Property line	Original lot line	(15)
Edge of pavement or roadway	Deed lot number in parenthesis	(59)
Corporation line	Parcel or index number in circle	o
District line	Improvement	+
County line	Railroad	—+—+—

Revisions

1	REVISED 1/8/64	9	O.G.I.S	3-27-95	J.E.B	17
2	REVISED TO 7/1/81 C.P.	10	ESI	1/18/01	REK	18
3	To JULY 1, 1983 C.P.	11	ESI	1/7/03	REK	19
4	Added 1981	12				20
5	To 7-1-85 C.P.	13				21
6	Revised to 7-1-88	14				22
7	OGIS 5-1-92	15	J.E.B			23
8	O.G.I.S 12-1-93	16	J.E.B			24

STATE OF WEST VIRGINIA
COUNTY OF PRESTON
Office of Assessor

GRANT DISTRICT
SHEET 05

Date, Aerial Photography: APRIL, 1960 Date, Map: MAR., 1963
Photo No: 334, 372 Scale: 1"=400'