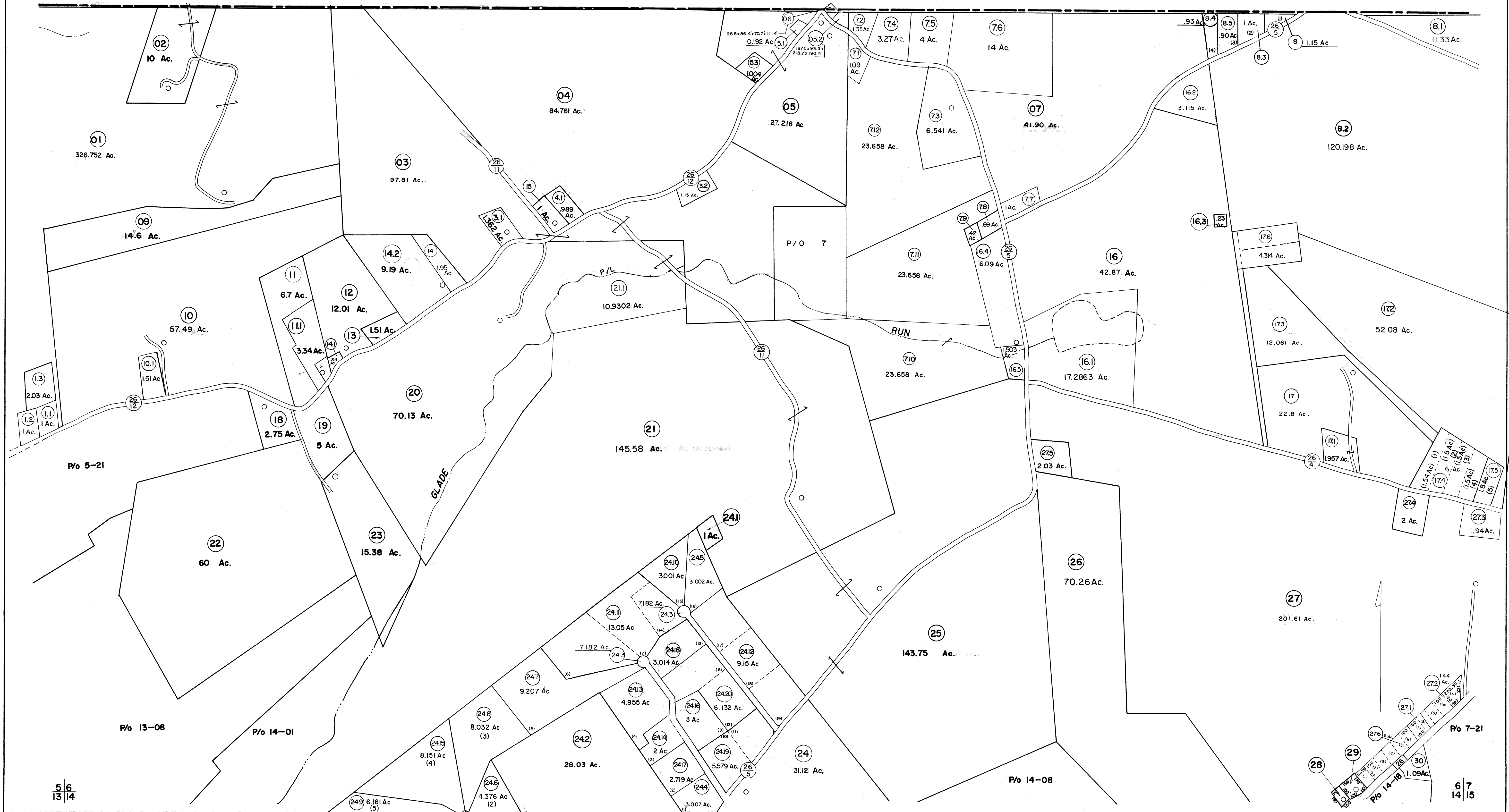


FAYETTE COUNTY PENNSYLVANIA



FOR TAX PURPOSES ONLY

Prepared by
L. ROBERT KIMBALL
Consulting Engineer
Ebensburg, Pennsylvania

Legend

Property line	Original lot line
Edge of pavement or roadway	Deed lot number in parenthesis (15)
Corporation line	Parcel or index number in circle (99)
District line	Improvement
County line	Railroad

Revisions

1	REVISED 1/8/64	9	O.G.I.S 12-1-93	J.E.B	17	ES1	1/8/03	REK
2	REVISED TO 7/1/81	10	O.G.I.S 3-27-95	J.E.B	18			
3	July 1982	11	O.G.I.S 5-15-96	J.E.B	19			
4	7-1-85 C.P.	12	O.G.I.S 1-1-97	J.E.B	20			
5	July, 1986	13	O.G.I.S 5/10/99	DSW	21			
6	Revised to 7-1-88	14	SLS INC. 3/29/00	JWM	22			
7	OGIS 11/5/91	15	ES1 1/18/01	REK	23			
8	OGIS 5-1-93	16	ES1 10-22-01	REC	24			

STATE OF WEST VIRGINIA
COUNTY OF PRESTON
Office of Assessor

GRANT DISTRICT
SHEET 06

Date, Aerial Photography: APRIL, 1960
Photo No: 420, 467
Date, Map: MAR., 1963
Scale: 1"=400'