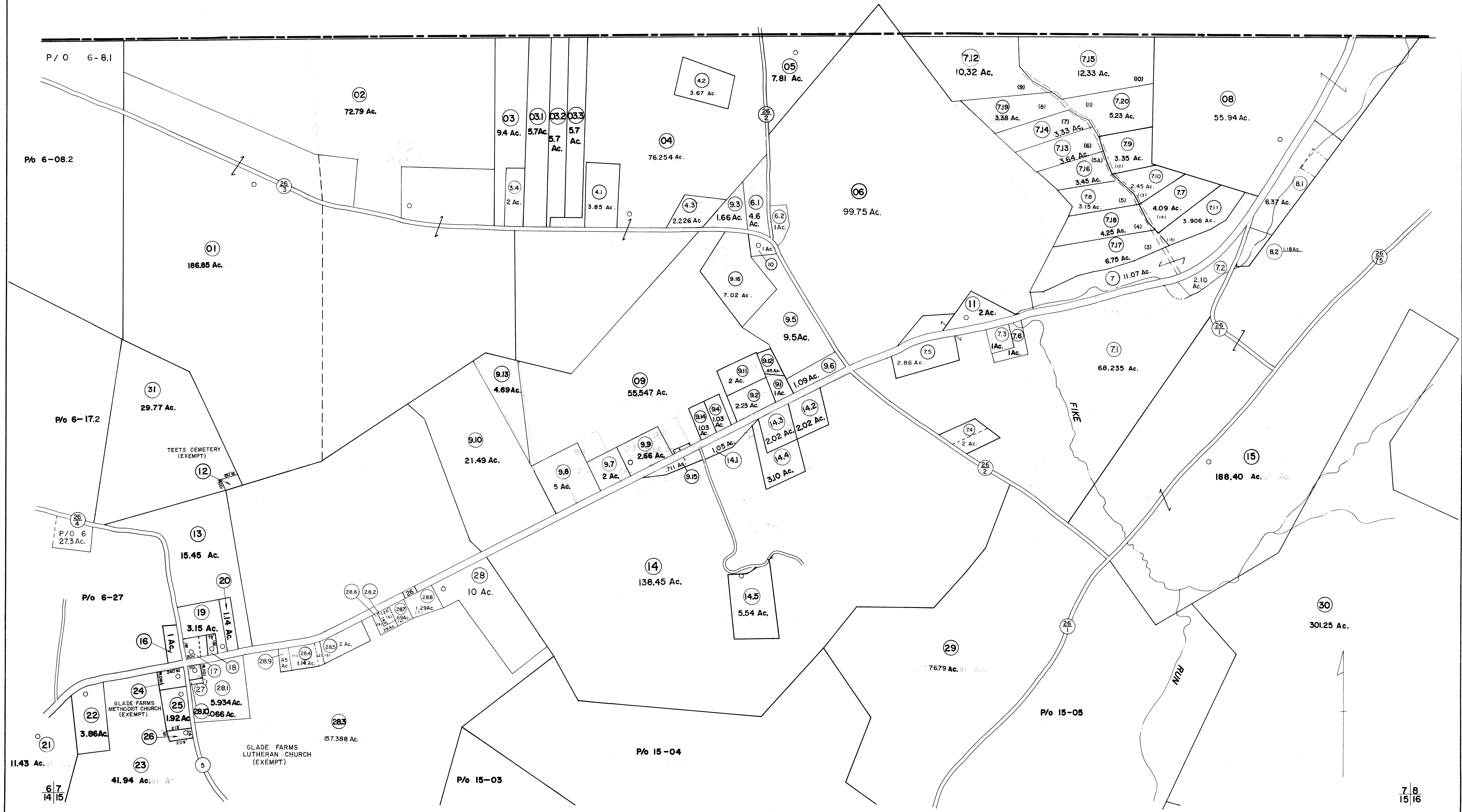


FAYETTE COUNTY PENNSYLVANIA



FOR TAX PURPOSES ONLY

Prepared by  
L. ROBERT KIMBALL  
Consulting Engineer  
Ebensburg, Pennsylvania

Legend

Property line	-----
Edge of pavement or roadway	-----
Corporation line	-----
District line	-----
County line	-----
Original lot line	-----
Deed lot number in parenthesis (15)	
Parcel or index number in circle (20)	
Improvement	o
Railroad	+++++

Revisions			
1	REVISED 1/8/64	9	OGIS 5-1-93 JEB
2	REVISED TO 7/1/81	10	O.G.I.S. 12-1-93 J.E.B
3	July 1984	11	O.G.I.S. 5-15-96 J.E.B
4	7-1-85 C.P.	12	O.G.I.S. 1-1-97 J.E.B
5	July, 1986	13	SLS INC. 5/1/98 DSW
6	Revised to 7-1-87	14	SLS INC. 5/16/99 DSW
7	Revised to 7-1-88	15	SLS INC. 3/29/00 JWM
8	OGIS 11/15/91	16	EST 1/18/01 REK
9		17	ESI 10-22-01 REC
10		18	ESI 1/8/03 REK
11		19	
12		20	
13		21	
14		22	
15		23	
16		24	

STATE OF WEST VIRGINIA  
COUNTY OF PRESTON  
Office of Assessor

GRANT DISTRICT  
SHEET 07

Date, Aerial Photography: APRIL, 1960 Date, Map: MAR., 1963  
Photo No: 467,469, 509 Scale: 1"=400'