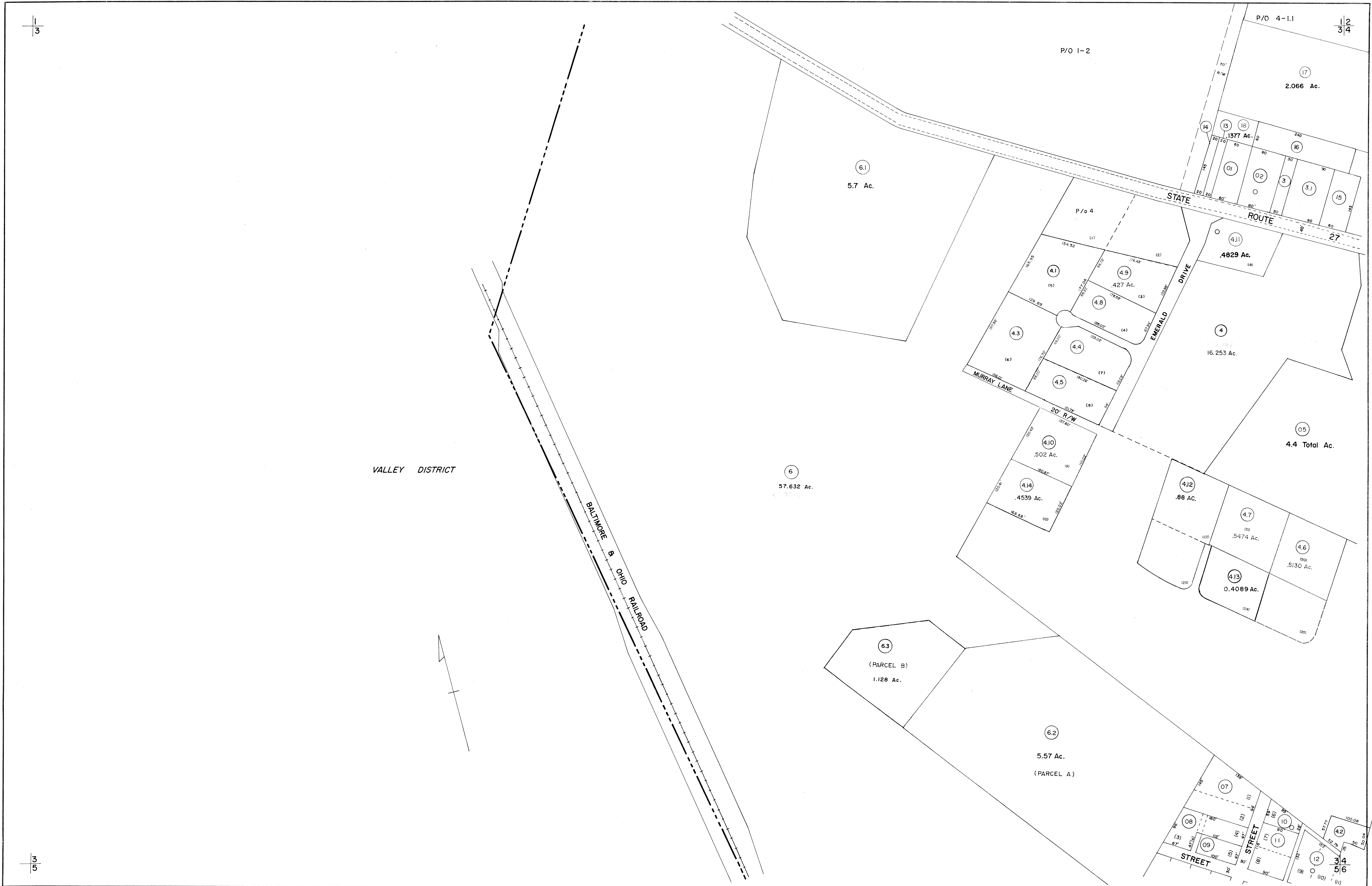


1/3

1/2
3/4



VALLEY DISTRICT

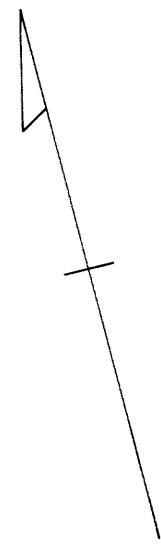
BALTIMORE & OHIO RAILROAD

STATE ROUTE 27

EMERALD DRIVE

MURRAY LANE

20' R/W



3/5

FOR TAX PURPOSES ONLY

Prepared by
L. ROBERT KIMBALL
 Consulting Engineer
 Ebensburg, Pennsylvania

Legend	
Property line	Original lot line
Edge of pavement or roadway	Deed lot number in parenthesis (15)
Corporation line	Parcel or index number in circle (17)
Improvement	Improvement
District line	Railroad
County line	

Revisions			
1	REVISED 1/17/64	9	O.G.I.S. 3-27-95 J.E.B.
2	Revised to 7-1-81	10	O.G.I.S. 1-1-97 J.E.B.
3	July 1983	11	SLS INC. 4/28/98 DSW
4	7/1/84	12	SLS INC. 5/3/99 DSW
5	REV. TO 7-1-88	13	SLS INC. 3/14/00 JAW
6	OGIS 9/18/91	14	ESI 1/15/01 REK
7	OGIS 5-1-93	15	ESI 10-9-01 RC
8	O.G.I.S. 12-1-93	16	J.E.B.
17	ESI 12/18/02	17	REK

STATE OF WEST VIRGINIA
 COUNTY OF PRESTON
 Office of Assessor

REEDSVILLE CORPORATION
 SHEET 03

Date, Aerial Photography: APRIL, 1960 Date, Map: JULY, 1962
 Photo No: 710 Scale: 1"=100'