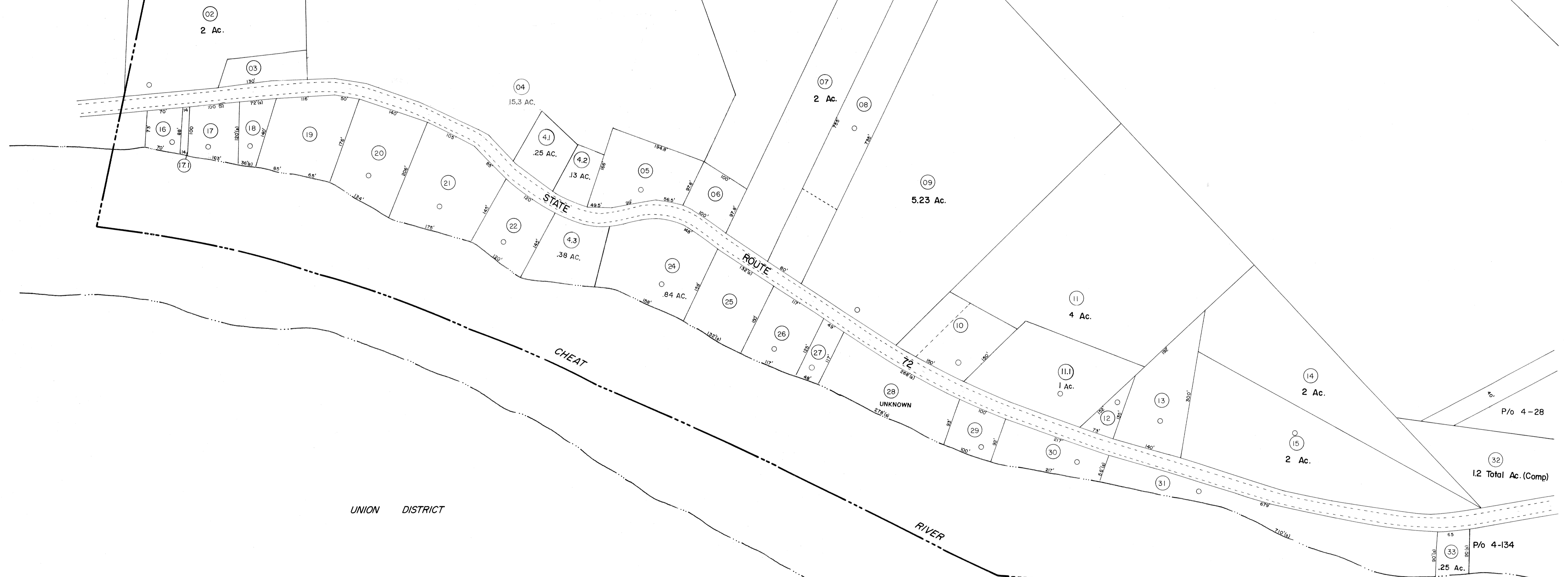


SEE PARCEL 06 SHEET 6

SEE PARCEL 07 SHEET 6

RENO DISTRICT

SEE SHEET 14  
PARCELS 04 & 04.1  
RENO DISTRICT



FOR TAX PURPOSES ONLY

Prepared by  
**L. ROBERT KIMBALL**  
Consulting Engineer  
Ebensburg, Pennsylvania

Legend	
Property line	Original lot line
Edge of pavement or roadway	Deed lot number in parenthesis (15)
Corporation line	Parcel or index number in circle (29)
District line	Improvement
County line	Railroad

Revisions			
1	REVISED 1/16/64	9	SLS INC. 3/14/00 JAW
2	Revised to 7-1-81	10	ESI 10-9-01 RC
3	4/1/83	11	
4	7/1/84	12	RLB
5	REV. TO 7-1-89	13	NCS
6	OGIS 9/18/91	14	DSH
7	OGIS 5-1-93	15	JEB
8	O.G.I.S 12-1-93	16	J.E.B

STATE OF WEST VIRGINIA  
COUNTY OF PRESTON  
Office of Assessor

**ROWLESBURG CORPORATION**  
**SHEET 03**

Date, Aerial Photography: APRIL, 1960 Date, Map: SEPT., 1962  
Photo No: 233 Scale: 1"=100'